




Product datasheet

Anti-DPY30 antibody - N-terminal ab187690

[2 References](#) [3 Images](#)

Overview

| | |
|----------------------------|---|
| Product name | Anti-DPY30 antibody - N-terminal |
| Description | Rabbit polyclonal to DPY30 - N-terminal |
| Host species | Rabbit |
| Tested applications | Suitable for: IP, IHC-Fr |
| Species reactivity | Reacts with: Mouse, Human Predicted to work with: Rat, Rabbit, Cow, Dog, Pig, Chimpanzee, Cynomolgus monkey, Rhesus monkey, Chinese hamster, Orangutan  |
| Immunogen | Synthetic peptide within Human DPY30 aa 1 to the C-terminus (N terminal). The exact immunogen sequence used to generate this antibody is proprietary information. If additional detail on the immunogen is needed to determine the suitability of the antibody for your needs, please contact our Scientific Support team to discuss your requirements. NP_115963.1. Database link: Q9C005  Run BLAST with  Run BLAST with |
| Positive control | IP: 293T cells. IHC-Fr: Human prostate carcinoma, Mouse teratoma tissues. |
| General notes | <p>The Life Science industry has been in the grips of a reproducibility crisis for a number of years. Abcam is leading the way in addressing this with our range of recombinant monoclonal antibodies and knockout edited cell lines for gold-standard validation. Please check that this product meets your needs before purchasing.</p> <p>If you have any questions, special requirements or concerns, please send us an inquiry and/or contact our Support team ahead of purchase. Recommended alternatives for this product can be found below, along with publications, customer reviews and Q&As</p> |

Properties

| | |
|-----------------------------|---|
| Form | Liquid |
| Storage instructions | Shipped at 4°C. Store at +4°C short term (1-2 weeks). Upon delivery aliquot. Store at -20°C long term. Avoid freeze / thaw cycle. |
| Storage buffer | pH: 7 Preservative: 0.09% Sodium azide Constituent: 99% Tris citrate/phosphate pH 7 to 8 |

| | |
|---------------------------|---|
| Purity | Immunogen affinity purified |
| Purification notes | ab187690 was affinity purified using an epitope specific to DPY30 immobilized on solid support. |
| Clonality | Polyclonal |
| Isotype | IgG |

Applications

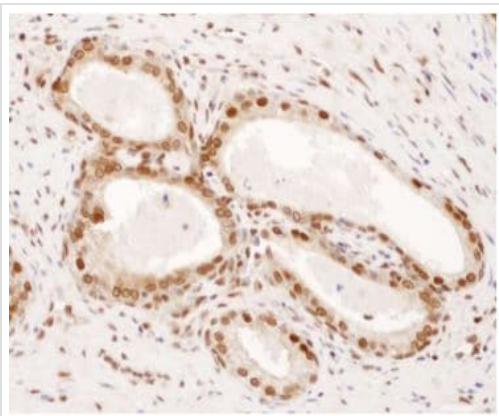
The Abpromise guarantee Our **Abpromise guarantee** covers the use of ab187690 in the following tested applications. The application notes include recommended starting dilutions; optimal dilutions/concentrations should be determined by the end user.

| Application | Abreviews | Notes |
|-------------|-----------|---|
| IP | | Use at 2-10 µg/mg of lysate. |
| IHC-Fr | | 1/1000 - 1/5000. Epitope retrieval with citrate buffer pH 6.0 is recommended for FFPE tissue sections. |

Target

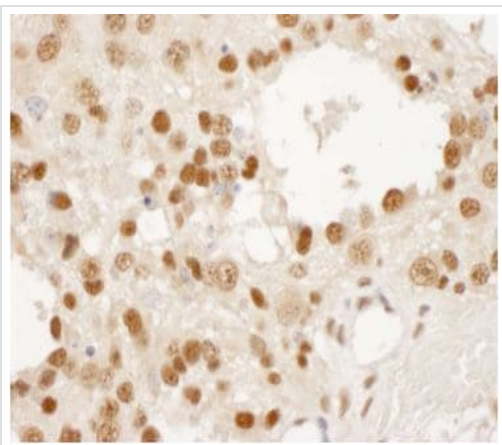
| | |
|------------------------------|--|
| Function | As part of the MLL1/MLL complex it is involved in methylation and dimethylation at 'Lys-4' of histone H3. H3 'Lys-4' methylation represents a specific tag for epigenetic transcriptional activation. May also play an indirect or direct role in endosomal transport. |
| Sequence similarities | Belongs to the dpy-30 family. |
| Cellular localization | Nucleus. Golgi apparatus > trans-Golgi network. |

Images



Immunohistochemical analysis of frozen section of Human prostate carcinoma tissue with ab187690 at 1/1000 (1µg/ml) dilution. Detection: DAB. Counterstain: IHC Hematoxylin (blue).

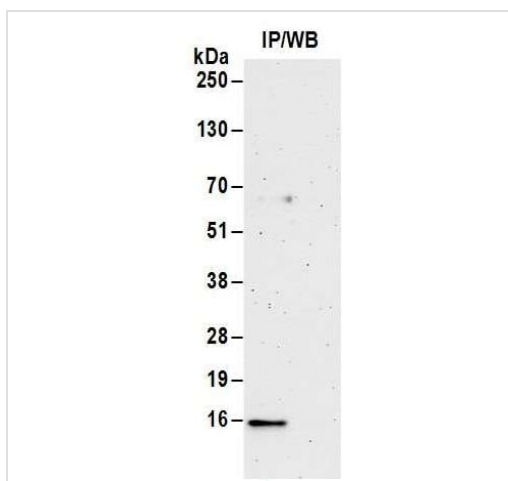
Immunohistochemistry (Frozen sections) - Anti-DPY30 antibody - N-terminal (ab187690)



Immunohistochemistry (Frozen sections) - Anti-DPY30 antibody - N-terminal (ab187690)

Immunohistochemical analysis of frozen section of Mouse teratoma tissue with ab187690 at 1/1000 (1 µg/ml) dilution.

Detection: DAB. Counterstain: IHC Hematoxylin (blue).



Immunoprecipitation - Anti-DPY30 antibody - N-terminal (ab187690)

Detection of DPY30 by Western Blot of Immunoprecipitate.

ab187690 at 1 µg/ml labeling DPY30 in 293T whole cell lysate immunoprecipitated using ab187690 at 6 µg/mg lysate (Lane 1) Control IgG (Lane 2) (1 mg/IP; 20% of IP loaded/lane). Detection: Chemiluminescence with exposure time of 3 minutes.

Please note: ab187690 has not performed satisfactorily when used for WB of DPY30 in crude preparations (e.g. whole cell lysate). It can be used for WB of enriched DPY30 (e.g. immunoprecipitated).

Please note: All products are "FOR RESEARCH USE ONLY. NOT FOR USE IN DIAGNOSTIC PROCEDURES"

Our Abpromise to you: Quality guaranteed and expert technical support

- Replacement or refund for products not performing as stated on the datasheet
- Valid for 12 months from date of delivery
- Response to your inquiry within 24 hours
- We provide support in Chinese, English, French, German, Japanese and Spanish
- Extensive multi-media technical resources to help you
- We investigate all quality concerns to ensure our products perform to the highest standards

If the product does not perform as described on this datasheet, we will offer a refund or replacement. For full details of the Abpromise, please visit <https://www.abcam.com/abpromise> or contact our technical team.

Terms and conditions

- Guarantee only valid for products bought direct from Abcam or one of our authorized distributors