


## Product datasheet

# Anti-DSCAML1 antibody ab227857

1 Image

### Overview

---

<b>Product name</b>	Anti-DSCAML1 antibody
<b>Description</b>	Rabbit polyclonal to DSCAML1
<b>Host species</b>	Rabbit
<b>Tested applications</b>	<b>Suitable for:</b> WB
<b>Species reactivity</b>	<b>Reacts with:</b> Mouse, Rat <b>Predicted to work with:</b> Human 
<b>Immunogen</b>	Recombinant fragment within Human DSCAML1 (internal sequence). The exact sequence is proprietary. Database link: <a href="#">Q8TD84</a>
<b>Positive control</b>	WB: Mouse and rat brain extracts.
<b>General notes</b>	<p>The Life Science industry has been in the grips of a reproducibility crisis for a number of years. Abcam is leading the way in addressing this with our range of recombinant monoclonal antibodies and knockout edited cell lines for gold-standard validation. Please check that this product meets your needs before purchasing.</p> <p>If you have any questions, special requirements or concerns, please send us an inquiry and/or contact our Support team ahead of purchase. Recommended alternatives for this product can be found below, along with publications, customer reviews and Q&amp;As</p>

### Properties

---

<b>Form</b>	Liquid
<b>Storage instructions</b>	Shipped at 4°C. Store at +4°C short term (1-2 weeks). Upon delivery aliquot. Store at -20°C long term. Avoid freeze / thaw cycle.
<b>Storage buffer</b>	pH: 7.00 Preservative: 0.025% Proclin 300 Constituents: 79% PBS, 20% Glycerol (glycerin, glycerine)
<b>Purity</b>	Immunogen affinity purified
<b>Clonality</b>	Polyclonal
<b>Isotype</b>	IgG

## Applications

**The Abpromise guarantee** Our **Abpromise guarantee** covers the use of ab227857 in the following tested applications. The application notes include recommended starting dilutions; optimal dilutions/concentrations should be determined by the end user.

Application	Abreviews	Notes
WB		1/500 - 1/3000. Predicted molecular weight: 224 kDa.

## Target

### Function

Cell adhesion molecule that plays a role in neuronal self-avoidance. Promotes repulsion between specific neuronal processes of either the same cell or the same subtype of cells. Promotes both isoneuronal self-avoidance for creating an orderly neurite arborization in retinal rod bipolar cells and heteroneuronal self-avoidance to maintain mosaic spacing between All amacrine cells.

### Tissue specificity

Detected in heart, liver, pancreas, skeletal muscle, kidney and in brain, in particular in the amygdala, caudate nucleus, corpus callosum, hippocampus, substantia nigra, thalamus and subthalamus.

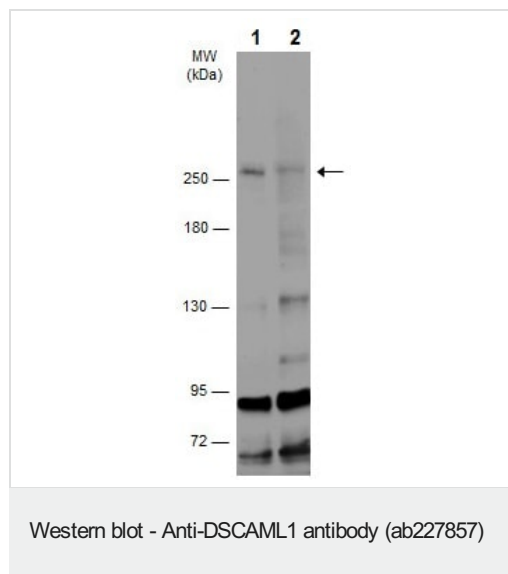
### Sequence similarities

Contains 6 fibronectin type-III domains.  
Contains 10 Ig-like C2-type (immunoglobulin-like) domains.

### Cellular localization

Cell membrane.

## Images



**All lanes** : Anti-DSCAML1 antibody (ab227857) at 1/500 dilution

**Lane 1** : Mouse brain extract

**Lane 2** : Rat brain extract

Lysates/proteins at 50 µg per lane.

### Secondary

**All lanes** : HRP-conjugated anti-rabbit IgG

**Predicted band size:** 224 kDa

5% SDS-PAGE gel.

**Please note:** All products are "FOR RESEARCH USE ONLY. NOT FOR USE IN DIAGNOSTIC PROCEDURES"

**Our Abpromise to you: Quality guaranteed and expert technical support**

- Replacement or refund for products not performing as stated on the datasheet
- Valid for 12 months from date of delivery
- Response to your inquiry within 24 hours
  
- We provide support in Chinese, English, French, German, Japanese and Spanish
- Extensive multi-media technical resources to help you
- We investigate all quality concerns to ensure our products perform to the highest standards

If the product does not perform as described on this datasheet, we will offer a refund or replacement. For full details of the Abpromise, please visit <https://www.abcam.com/abpromise> or contact our technical team.

### **Terms and conditions**

---

- Guarantee only valid for products bought direct from Abcam or one of our authorized distributors