

Product datasheet

Anti-dUTPase antibody [EPR9608(B)] ab137097

Recombinant RabMAb

★★★★★ 1 Abreviews 2 References 4 Images

Overview

Product name	Anti-dUTPase antibody [EPR9608(B)]
Description	Rabbit monoclonal [EPR9608(B)] to dUTPase
Host species	Rabbit
Tested applications	Suitable for: ICC/IF, WB, Flow Cyt (Intra) Unsuitable for: IHC-P
Species reactivity	Reacts with: Human
Immunogen	Synthetic peptide within Human dUTPase aa 200-300. The exact sequence is proprietary.
Positive control	WB: HeLa, 293T, Ramos and HepG2 cell lysates; ICC: HepG2 cells; Flow Cyt (intra): SW620 cells
General notes	<p>This product is a recombinant monoclonal antibody, which offers several advantages including:</p> <ul style="list-style-type: none"> - High batch-to-batch consistency and reproducibility - Improved sensitivity and specificity - Long-term security of supply - Animal-free production <p>For more information see here.</p> <p>Our RabMAb[®] technology is a patented hybridoma-based technology for making rabbit monoclonal antibodies. For details on our patents, please refer to RabMAb[®] patents.</p> <p>Mouse, Rat: We have preliminary internal testing data to indicate this antibody may not react with these species. Please contact us for more information.</p>

Properties

Form	Liquid
Storage instructions	Shipped at 4°C. Store at -20°C.
Storage buffer	<p>pH: 7.2</p> <p>Preservative: 0.01% Sodium azide</p> <p>Constituents: 9% PBS, 40% Glycerol (glycerin, glycerine), 0.05% BSA, 50% Tissue culture supernatant</p>
Purity	Tissue culture supernatant

Clonality	Monoclonal
Clone number	EPR9608(B)
Isotype	IgG

Applications

The Abpromise guarantee Our **Abpromise guarantee** covers the use of ab137097 in the following tested applications. The application notes include recommended starting dilutions; optimal dilutions/concentrations should be determined by the end user.

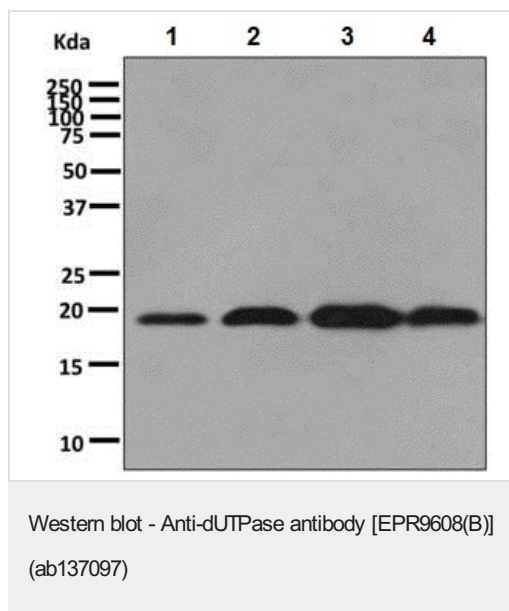
Application	Abreviews	Notes
ICC/IF	★★★★★ (1)	1/250 - 1/500.
WB		1/10000 - 1/50000. Predicted molecular weight: 26, 18 kDa.
Flow Cyt (Intra)		1/1000.

Application notes Is unsuitable for IHC-P.

Target

Function	This enzyme is involved in nucleotide metabolism: it produces dUMP, the immediate precursor of thymidine nucleotides and it decreases the intracellular concentration of dUTP so that uracil cannot be incorporated into DNA.
Tissue specificity	Found in a variety of tissues.
Pathway	Pyrimidine metabolism; dUMP biosynthesis; dUMP from dCTP (dUTP route): step 2/2.
Sequence similarities	Belongs to the dUTPase family.
Post-translational modifications	Phosphorylation in mature T-cells occur in a cell cycle-dependent manner.
Cellular localization	Mitochondrion and Nucleus.

Images



All lanes : Anti-dUTPase antibody [EPR9608(B)] (ab137097) at 1/10000 dilution

Lane 1 : HeLa cell lysate

Lane 2 : 293T cell lysate

Lane 3 : Ramos cell lysate

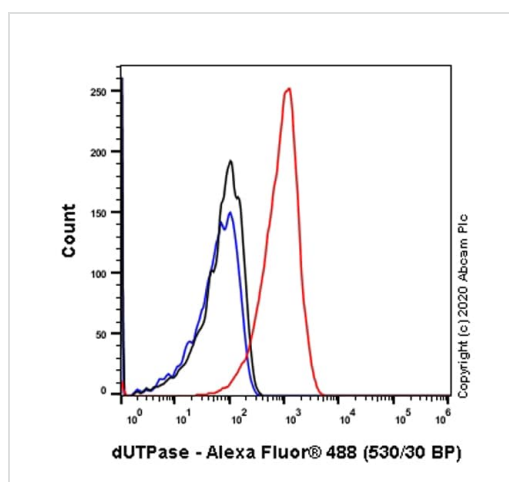
Lane 4 : HepG2 cell lysate

Lysates/proteins at 10 µg per lane.

Secondary

All lanes : HRP-labelled Goat anti-Rabbit at 1/2000 dilution

Predicted band size: 26, 18 kDa



Flow Cytometry analysis of SW620 (Human colorectal adenocarcinoma epithelial cell) cells labeling dUTPase with purified ab137097 at 1/1000 dilution (1 µg/mL) (Red). Cells were fixed with 4% Paraformaldehyde and permeabilised with 90% Methanol. A Goat anti rabbit IgG (Alexa Fluor® 488, **ab150077**) secondary antibody was used at 1/2000. Isotype control - Rabbit monoclonal IgG (Black). Unlabeled control - Cell without incubation with primary antibody and secondary antibody (Blue).

Flow Cytometry (Intracellular) - Anti-dUTPase antibody [EPR9608(B)] (ab137097)



Immunofluorescent analysis of HepG2 (Human liver hepatocellular carcinoma cell line) cells labeling dUTPase with ab137097 at 1/250 dilution.

Why choose a recombinant antibody?



Research with confidence
Consistent and reproducible results



Long-term and scalable supply
Recombinant technology



Success from the first experiment
Confirmed specificity



Ethical standards compliant
Animal-free production

Anti-dUTPase antibody [EPR9608(B)] (ab137097)

Please note: All products are "FOR RESEARCH USE ONLY. NOT FOR USE IN DIAGNOSTIC PROCEDURES"

Our Abpromise to you: Quality guaranteed and expert technical support

- Replacement or refund for products not performing as stated on the datasheet
- Valid for 12 months from date of delivery
- Response to your inquiry within 24 hours
- We provide support in Chinese, English, French, German, Japanese and Spanish
- Extensive multi-media technical resources to help you
- We investigate all quality concerns to ensure our products perform to the highest standards

If the product does not perform as described on this datasheet, we will offer a refund or replacement. For full details of the Abpromise, please visit <https://www.abcam.com/abpromise> or contact our technical team.

Terms and conditions

- Guarantee only valid for products bought direct from Abcam or one of our authorized distributors