





Product datasheet

Anti-E tag antibody ab95868

★★★★★ [1 Abreviews](#) [2 References](#) [1 Image](#)

Overview

| | |
|---------------------|---|
| Product name | Anti-E tag antibody |
| Description | Goat polyclonal to E tag |
| Host species | Goat |
| Tested applications | Suitable for: WB |
| Species reactivity | Reacts with: Species independent |
| Immunogen | Synthetic peptide corresponding to E tag conjugated to keyhole limpet haemocyanin.  Run BLAST with   Run BLAST with  |
| Positive control | WB: E. coli whole cell lysate expressing a multi-tag fusion protein. |
| General notes | <p>The Life Science industry has been in the grips of a reproducibility crisis for a number of years. Abcam is leading the way in addressing this with our range of recombinant monoclonal antibodies and knockout edited cell lines for gold-standard validation. Please check that this product meets your needs before purchasing.</p> <p>If you have any questions, special requirements or concerns, please send us an inquiry and/or contact our Support team ahead of purchase. Recommended alternatives for this product can be found below, along with publications, customer reviews and Q&As</p> |

Properties

| | |
|----------------------|---|
| Form | Liquid |
| Storage instructions | Shipped at 4°C. Upon delivery aliquot and store at -20°C. Avoid freeze / thaw cycles. |
| Storage buffer | pH: 6.8 Preservative: 0.1% Sodium azide Constituent: PBS |
| Purity | Immunogen affinity purified |
| Clonality | Polyclonal |
| Isotype | IgG |

Applications

The **Abpromise guarantee** Our **Abpromise guarantee** covers the use of ab95868 in the following tested applications.

The application notes include recommended starting dilutions; optimal dilutions/concentrations should be determined by the end user.

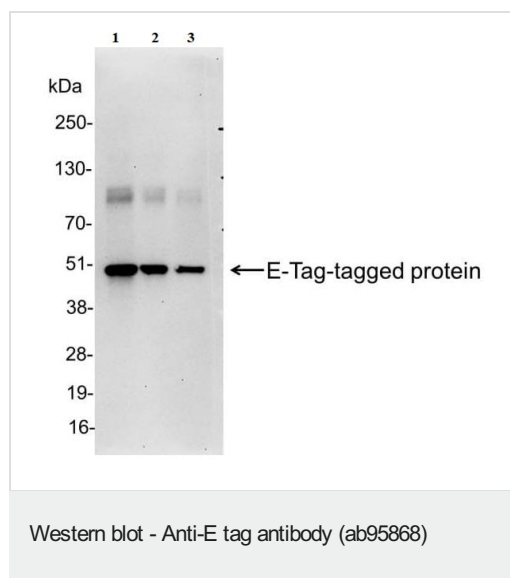
| Application | Abreviews | Notes |
|-------------|-----------|---|
| WB | | Use at an assay dependent concentration. For colorimetric techniques use at a dilution of 1/1000 - 1/10000 and for chemiluminescent techniques use at a dilution of 1/1000 - 1/30000. |

Target

Relevance

E tag is a peptide epitope tag, sequence GAPVPYPDPLEPR.

Images



All lanes : Anti-E tag antibody (ab95868) at 0.04 µg/ml

Lane 1 : E. coli whole cell lysate expressing a multi-tag fusion protein at 0.2 µg

Lane 2 : E. coli whole cell lysate expressing a multi-tag fusion protein at 0.1 µg

Lane 3 : E. coli whole cell lysate expressing a multi-tag fusion protein at 0.05 µg

Exposure time: 30 seconds

Please note: All products are "FOR RESEARCH USE ONLY. NOT FOR USE IN DIAGNOSTIC PROCEDURES"

Our Abpromise to you: Quality guaranteed and expert technical support

- Replacement or refund for products not performing as stated on the datasheet
- Valid for 12 months from date of delivery
- Response to your inquiry within 24 hours
- We provide support in Chinese, English, French, German, Japanese and Spanish
- Extensive multi-media technical resources to help you
- We investigate all quality concerns to ensure our products perform to the highest standards

If the product does not perform as described on this datasheet, we will offer a refund or replacement. For full details of the Abpromise, please visit <https://www.abcam.com/abpromise> or contact our technical team.

Terms and conditions

- Guarantee only valid for products bought direct from Abcam or one of our authorized distributors