


Product datasheet

Anti-E1 Ubiquitin Activating Enzyme 1/UBA1 antibody ab264179

[1 References](#) [2 Images](#)

Overview

| | |
|----------------------------|---|
| Product name | Anti-E1 Ubiquitin Activating Enzyme 1/UBA1 antibody |
| Description | Rabbit polyclonal to E1 Ubiquitin Activating Enzyme 1/UBA1 |
| Host species | Rabbit |
| Tested applications | Suitable for: IP, WB |
| Species reactivity | Reacts with: Mouse, Human Predicted to work with: Rat, Rabbit, Cow  |
| Immunogen | Synthetic peptide aa 1-50. The exact sequence is proprietary. Database link: P22314 |
| Positive control | WB: HeLa, HEK-293T and NIH/3T3 whole cell lysates; IP: HeLa whole cell lysate. |
| General notes | <p>The Life Science industry has been in the grips of a reproducibility crisis for a number of years. Abcam is leading the way in addressing this with our range of recombinant monoclonal antibodies and knockout edited cell lines for gold-standard validation. Please check that this product meets your needs before purchasing.</p> <p>If you have any questions, special requirements or concerns, please send us an inquiry and/or contact our Support team ahead of purchase. Recommended alternatives for this product can be found below, along with publications, customer reviews and Q&As</p> |

Properties

| | |
|-----------------------------|---|
| Form | Liquid |
| Storage instructions | Shipped at 4°C. Store at +4°C short term (1-2 weeks). Upon delivery aliquot. Store at -20°C. Avoid freeze / thaw cycle. |
| Storage buffer | pH: 6.8 Preservative: 0.09% Sodium azide Constituents: Tris buffered saline, 0.1% BSA |
| Purity | Immunogen affinity purified |
| Clonality | Polyclonal |
| Isotype | IgG |

Applications

The Abpromise guarantee

Our **Abpromise guarantee** covers the use of ab264179 in the following tested applications.

The application notes include recommended starting dilutions; optimal dilutions/concentrations should be determined by the end user.

| Application | Abreviews | Notes |
|-------------|-----------|-----------------------------|
| IP | | Use at 2-5 µg/mg of lysate. |
| WB | | 1/2000 - 1/10000. |

Target

Function

Activates ubiquitin by first adenylating its C-terminal glycine residue with ATP, and thereafter linking this residue to the side chain of a cysteine residue in E1, yielding an ubiquitin-E1 thioester and free AMP.

Pathway

Protein modification; protein ubiquitination.

Involvement in disease

Defects in UBA1 are the cause of spinal muscular atrophy X-linked type 2 (SMAX2) [MIM:301830]; also known as X-linked lethal infantile spinal muscular atrophy, distal X-linked arthrogryposis multiplex congenita or X-linked arthrogryposis type 1 (AMCX1). Spinal muscular atrophy refers to a group of neuromuscular disorders characterized by degeneration of the anterior horn cells of the spinal cord, leading to symmetrical muscle weakness and atrophy. SMAX2 is a lethal infantile form presenting with hypotonia, areflexia, and multiple congenital contractures.

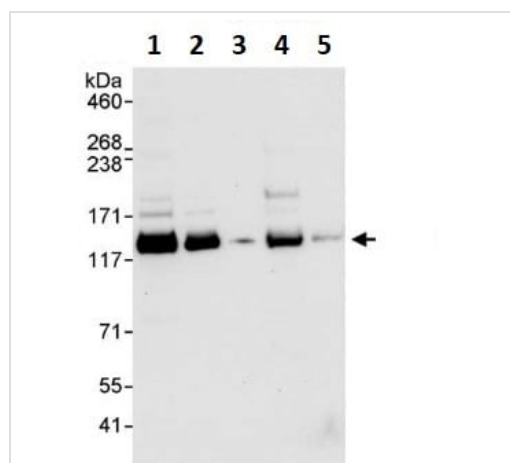
Sequence similarities

Belongs to the ubiquitin-activating E1 family.

Post-translational modifications

ISGylated.

Images



Western blot - Anti-E1 Ubiquitin Activating Enzyme 1/UBA1 antibody (ab264179)

All lanes : Anti-E1 Ubiquitin Activating Enzyme 1/UBA1 antibody (ab264179) at 0.04 µg/ml

Lane 1 : HeLa whole cell lysate at 50 µg

Lane 2 : HeLa whole cell lysate at 15 µg

Lane 3 : HeLa whole cell lysate at 5 µg

Lane 4 : HEK-293T whole cell lysate at 50 µg

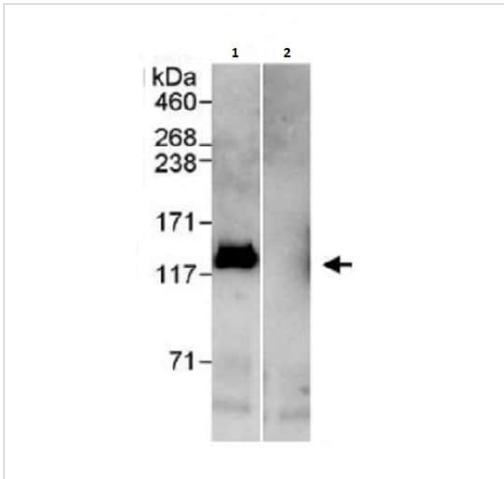
Lane 5 : NIH/3T3 whole cell lysate at 50 µg

Secondary

All lanes : Goat anti-Rabbit Light Chain HRP Conjugate

Exposure time: 30 seconds

4-8% SDS-PAGE.



Immunoprecipitation - Anti-E1 Ubiquitin Activating
Enzyme 1/UBA1 antibody (ab264179)

UBA1 was immunoprecipitated from 1mg of HeLa (Human epithelial cell line from cervix adenocarcinoma) whole cell lysate (20% of IP loaded) using ab264179 at 3 μ g/mg lysate. Western blot was performed on the immunoprecipitate using ab264179 at 1 μ g/ml.

Lane 1: ab264179 in HeLa whole cell lysate.

Lane 2: Control IgG in HeLa whole cell lysate.

Detected with chemiluminescence with exposure time of 30 seconds.

Please note: All products are "FOR RESEARCH USE ONLY. NOT FOR USE IN DIAGNOSTIC PROCEDURES"

Our Abpromise to you: Quality guaranteed and expert technical support

- Replacement or refund for products not performing as stated on the datasheet
- Valid for 12 months from date of delivery
- Response to your inquiry within 24 hours
- We provide support in Chinese, English, French, German, Japanese and Spanish
- Extensive multi-media technical resources to help you
- We investigate all quality concerns to ensure our products perform to the highest standards

If the product does not perform as described on this datasheet, we will offer a refund or replacement. For full details of the Abpromise, please visit <https://www.abcam.com/abpromise> or contact our technical team.

Terms and conditions

- Guarantee only valid for products bought direct from Abcam or one of our authorized distributors