


Product datasheet

Anti-E1 Ubiquitin Activating Enzyme 1/UBA1 antibody ab264182

[2 Images](#)

Overview

Product name	Anti-E1 Ubiquitin Activating Enzyme 1/UBA1 antibody
Description	Rabbit polyclonal to E1 Ubiquitin Activating Enzyme 1/UBA1
Host species	Rabbit
Tested applications	Suitable for: IHC-P, WB
Species reactivity	Reacts with: Mouse, Human Predicted to work with: Rat, Rabbit, Cow 
Immunogen	Synthetic peptide aa 1008-1058. The exact sequence is proprietary. Database link: P22314
Positive control	WB: HeLa, HEK-293T and NIH/3T3 whole cell lysates; IHC-P: Human prostate carcinoma tissue.
General notes	<p>The Life Science industry has been in the grips of a reproducibility crisis for a number of years. Abcam is leading the way in addressing this with our range of recombinant monoclonal antibodies and knockout edited cell lines for gold-standard validation. Please check that this product meets your needs before purchasing.</p> <p>If you have any questions, special requirements or concerns, please send us an inquiry and/or contact our Support team ahead of purchase. Recommended alternatives for this product can be found below, along with publications, customer reviews and Q&As</p>

Properties

Form	Liquid
Storage instructions	Shipped at 4°C. Store at +4°C short term (1-2 weeks). Upon delivery aliquot. Store at -20°C. Avoid freeze / thaw cycle.
Storage buffer	pH: 6.8 Preservative: 0.09% Sodium azide Constituents: Tris buffered saline, 0.1% BSA
Purity	Immunogen affinity purified
Clonality	Polyclonal
Isotype	IgG

Applications

The Abpromise guarantee Our **Abpromise guarantee** covers the use of ab264182 in the following tested applications.

The application notes include recommended starting dilutions; optimal dilutions/concentrations should be determined by the end user.

Application	Abreviews	Notes
IHC-P		1/100 - 1/500.
WB		1/2000 - 1/10000.

Target

Function Activates ubiquitin by first adenylating its C-terminal glycine residue with ATP, and thereafter linking this residue to the side chain of a cysteine residue in E1, yielding an ubiquitin-E1 thioester and free AMP.

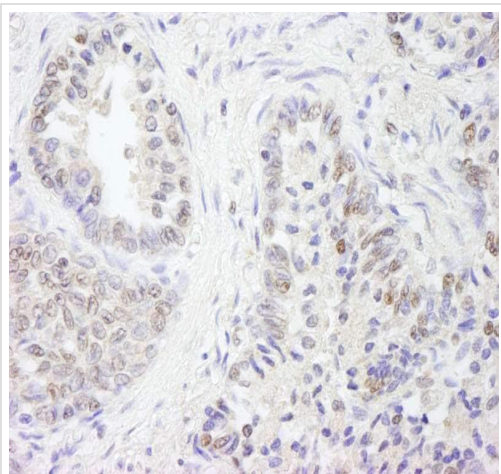
Pathway Protein modification; protein ubiquitination.

Involvement in disease Defects in UBA1 are the cause of spinal muscular atrophy X-linked type 2 (SMA2) [MIM:301830]; also known as X-linked lethal infantile spinal muscular atrophy, distal X-linked arthrogryposis multiplex congenita or X-linked arthrogryposis type 1 (AMCX1). Spinal muscular atrophy refers to a group of neuromuscular disorders characterized by degeneration of the anterior horn cells of the spinal cord, leading to symmetrical muscle weakness and atrophy. SMA2 is a lethal infantile form presenting with hypotonia, areflexia, and multiple congenital contractures.

Sequence similarities Belongs to the ubiquitin-activating E1 family.

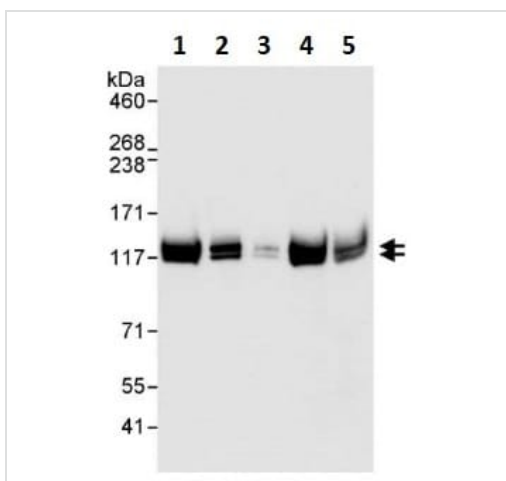
Post-translational modifications ISGylated.

Images



Immunohistochemistry (Formalin/PFA-fixed paraffin-embedded sections) - Anti-E1 Ubiquitin Activating Enzyme 1/UBA1 antibody (ab264182)

Immunohistochemical analysis of formalin/PFA-fixed, paraffin-embedded human prostate carcinoma tissue staining E1 Ubiquitin Activating Enzyme 1/UBA1 with ab264182 at 1/200 dilution. Detection: DAB.



Western blot - Anti-E1 Ubiquitin Activating Enzyme 1/UBA1 antibody (ab264182)

All lanes : Anti-E1 Ubiquitin Activating Enzyme 1/UBA1 antibody (ab264182) at 0.04 µg/ml

Lane 1 : HeLa whole cell lysate at 50 µg

Lane 2 : HeLa whole cell lysate at 15 µg

Lane 3 : HeLa whole cell lysate at 5 µg

Lane 4 : HEK-293T whole cell lysate at 50 µg

Lane 5 : NIH/3T3 whole cell lysate at 50 µg

Exposure time: 10 seconds

4-8% SDS-PAGE.

Please note: All products are "FOR RESEARCH USE ONLY. NOT FOR USE IN DIAGNOSTIC PROCEDURES"

Our Abpromise to you: Quality guaranteed and expert technical support

- Replacement or refund for products not performing as stated on the datasheet
- Valid for 12 months from date of delivery
- Response to your inquiry within 24 hours
- We provide support in Chinese, English, French, German, Japanese and Spanish
- Extensive multi-media technical resources to help you
- We investigate all quality concerns to ensure our products perform to the highest standards

If the product does not perform as described on this datasheet, we will offer a refund or replacement. For full details of the Abpromise, please visit <https://www.abcam.com/abpromise> or contact our technical team.

Terms and conditions

- Guarantee only valid for products bought direct from Abcam or one of our authorized distributors