

Product datasheet

Anti-E1B-AP5 antibody [EP2633Y] ab68480

KO VALIDATED RabMAb

[5 References](#) [3 Images](#)

Overview

Product name	Anti-E1B-AP5 antibody [EP2633Y]
Description	Rabbit monoclonal [EP2633Y] to E1B-AP5
Host species	Rabbit
Tested applications	Suitable for: WB, IHC-P Unsuitable for: Flow Cyt or ICC/IF
Species reactivity	Reacts with: Human
Immunogen	Synthetic peptide within Human E1B-AP5 (C terminal). The exact sequence is proprietary.
Positive control	WB: Wild-type HEK293T, Raji, and HeLa cell lysates. IHC-P: Human brain tissue.
General notes	<p>Our RabMAb[®] technology is a patented hybridoma-based technology for making rabbit monoclonal antibodies. For details on our patents, please refer to RabMAb[®] patents.</p> <p>The Life Science industry has been in the grips of a reproducibility crisis for a number of years. Abcam is leading the way in addressing this with our range of recombinant monoclonal antibodies and knockout edited cell lines for gold-standard validation. Please check that this product meets your needs before purchasing.</p> <p>If you have any questions, special requirements or concerns, please send us an inquiry and/or contact our Support team ahead of purchase. Recommended alternatives for this product can be found below, along with publications, customer reviews and Q&As</p> <p>Mouse, Rat: We have preliminary internal testing data to indicate this antibody may not react with these species. Please contact us for more information.</p>

Properties

Form	Liquid
Storage instructions	Shipped at 4°C. Upon delivery aliquot and store at -20°C. Avoid freeze / thaw cycles.
Storage buffer	pH: 7.20 Preservative: 0.05% Sodium azide Constituents: 0.1% BSA, 40% Glycerol (glycerin, glycerine), 9.85% Tris glycine, 50% Tissue culture supernatant
Purity	Protein A purified

Clonality	Monoclonal
Clone number	EP2633Y
Isotype	IgG

Applications

The Abpromise guarantee Our **Abpromise guarantee** covers the use of ab68480 in the following tested applications. The application notes include recommended starting dilutions; optimal dilutions/concentrations should be determined by the end user.

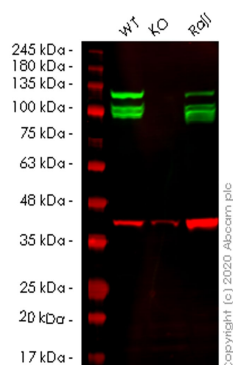
Application	Abreviews	Notes
WB		1/10000 - 1/50000. Detects a band of approximately 96 kDa (predicted molecular weight: 96 kDa).
IHC-P		1/250 - 1/500. Perform heat mediated antigen retrieval before commencing with IHC staining protocol.

Application notes Is unsuitable for Flow Cyt or ICC/IF.

Target

Function	Acts as a basic transcriptional regulator. Represses basic transcription driven by several virus and cellular promoters. When associated with BRD7, activates transcription of glucocorticoid-responsive promoter in the absence of ligand-stimulation. Plays also a role in mRNA processing and transport. Binds avidly to poly(G) and poly(C) RNA homopolymers in vitro.
Sequence similarities	Contains 1 B30.2/SPRY domain. Contains 1 SAP domain.
Domain	The RGG-box domain is methylated.
Post-translational modifications	Methylated.
Cellular localization	Nucleus.

Images



Western blot - Anti-E1B-AP5 antibody [EP2633Y] (ab68480)

All lanes : Anti-E1B-AP5 antibody [EP2633Y] (ab68480) at 1/1000 dilution

Lane 1 : Wild-type HEK293T cell lysate

Lane 2 : HNRNPUL1 knockout HEK293T cell lysate

Lane 3 : Raji cell lysate

Lysates/proteins at 20 µg per lane.

Secondary

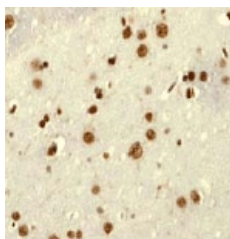
All lanes : Goat anti-Rabbit IgG H&L (IRDye® 800CW) preadsorbed ([ab216773](#)) at 1/10000 dilution

Predicted band size: 96 kDa

Observed band size: 96 kDa

Lanes 1-3: Merged signal (red and green). Green - ab68480 observed at 96 kDa. Red - loading control [ab8245](#) observed at 36 kDa.

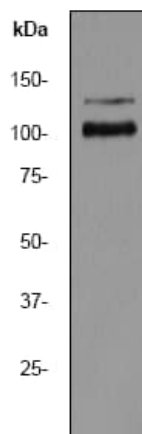
ab68480 Anti-E1B-AP5 antibody [EP2633Y] was shown to specifically react with E1B-AP5 in wild-type HEK293T cells. Loss of signal was observed when knockout cell line [ab266142](#) (knockout cell lysate [ab257993](#)) was used. Wild-type and E1B-AP5 knockout samples were subjected to SDS-PAGE. ab68480 and Anti-GAPDH antibody [6C5] - Loading Control ([ab8245](#)) were incubated at room temperature for 2.5 hours at 1 in 1000 dilution and 1 in 20000 dilution respectively. Blots were developed with Goat anti-Rabbit IgG H&L (IRDye® 800CW) preadsorbed ([ab216773](#)) and Goat anti-Mouse IgG H&L (IRDye® 680RD) preadsorbed ([ab216776](#)) secondary antibodies at 1 in 20000 dilution for 1 hour at room temperature before imaging.



Immunohistochemistry (Formalin/PFA-fixed paraffin-embedded sections) - Anti-E1B-AP5 antibody [EP2633Y] (ab68480)

ab68480 at 1/250 dilution staining E1B-AP5 in human brain by Immunohistochemistry, Paraffin-embedded tissue.

Perform heat mediated antigen retrieval before commencing with IHC staining protocol.



Western blot - Anti-E1B-AP5 antibody [EP2633Y]
(ab68480)

Anti-E1B-AP5 antibody [EP2633Y] (ab68480) at 1/50000 dilution +
HeLa cell lysate at 10 µg

Secondary

goat anti-rabbit, HRP conjugated at 1/2000 dilution

Predicted band size: 96 kDa

Observed band size: 96 kDa

Additional bands at: 125 kDa. We are unsure as to the identity of these extra bands.

Please note: All products are "FOR RESEARCH USE ONLY. NOT FOR USE IN DIAGNOSTIC PROCEDURES"

Our Abpromise to you: Quality guaranteed and expert technical support

- Replacement or refund for products not performing as stated on the datasheet
- Valid for 12 months from date of delivery
- Response to your inquiry within 24 hours
- We provide support in Chinese, English, French, German, Japanese and Spanish
- Extensive multi-media technical resources to help you
- We investigate all quality concerns to ensure our products perform to the highest standards

If the product does not perform as described on this datasheet, we will offer a refund or replacement. For full details of the Abpromise, please visit <https://www.abcam.com/abpromise> or contact our technical team.

Terms and conditions

- Guarantee only valid for products bought direct from Abcam or one of our authorized distributors