

### Anti-E2 tag antibody [5E11] ab977

★★★★★ [2 Abreviews](#) [10 References](#) [2 Images](#)

#### Overview

<b>Product name</b>	Anti-E2 tag antibody [5E11]
<b>Description</b>	Mouse monoclonal [5E11] to E2 tag
<b>Host species</b>	Mouse
<b>Tested applications</b>	<b>Suitable for:</b> IP, WB, ICC/IF
<b>Species reactivity</b>	<b>Reacts with:</b> Species independent
<b>Immunogen</b>	Recombinant full length protein corresponding to Bovine E2 tag. Database link: <a href="#">P03122</a>
<b>Epitope</b>	SSTSSDFRDR (linear)
<b>General notes</b>	<p>E2TAG having sequence SSTSSDFRDR or GVSSTSSDFRDR and antibodies specific for the peptide tag are covered by PCT Patent No PCT/EE01/00001 held by Quattromed Ltd. End-user is granted to use the licenced technology solely for internal research purpose only. This antibody should be used in conjunction with the E2 tagging vectors (links to the appropriate datasheet can be found in the Related Products section at the bottom of the datasheet).</p> <p>The Life Science industry has been in the grips of a reproducibility crisis for a number of years. Abcam is leading the way in addressing this with our range of recombinant monoclonal antibodies and knockout edited cell lines for gold-standard validation. Please check that this product meets your needs before purchasing.</p> <p>If you have any questions, special requirements or concerns, please send us an inquiry and/or contact our Support team ahead of purchase. Recommended alternatives for this product can be found below, along with publications, customer reviews and Q&amp;As</p>

#### Properties

<b>Form</b>	Liquid
<b>Storage instructions</b>	Shipped at 4°C. Upon delivery aliquot and store at -20°C or -80°C. Avoid repeated freeze / thaw cycles.
<b>Storage buffer</b>	pH: 7.4 Constituent: 50% Glycerol (glycerin, glycerine)
<b>Purity</b>	Protein G purified
<b>Clonality</b>	Monoclonal
<b>Clone number</b>	5E11

## Applications

### The Abpromise guarantee

Our **Abpromise guarantee** covers the use of ab977 in the following tested applications.

The application notes include recommended starting dilutions; optimal dilutions/concentrations should be determined by the end user.

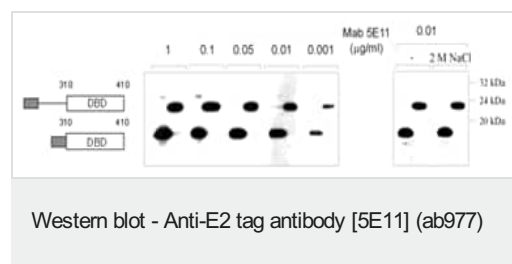
Application	Abreviews	Notes
IP	★★★★★ (1)	Use at an assay dependent concentration.
WB		1/1000 - 1/5000. Incubate for 1 hour at room temperature. Background can be reduced by adding NaCl up to a concentration of 1.5M.
ICC/IF	★★★★★ (1)	1/1000. Incubate for 1 hour at room temperature.

## Target

### Relevance

The E2Tag is a peptide which is derived from the Bovine Papillomavirus type-1 transactivator protein E2 and consists of 10 amino acids(SSTSSDFRDR). The detection of E2-tagged proteins is based on the binding of mouse monoclonal antibodies specific to the tagged recombinant protein.

## Images



*Cos-7 cell lysates (1 µg of total protein per lane) were transfected with pQM vectors encoding two different E2-tagged proteins. Detection is performed with anti-E2Tag antibody (5E11) (1:10 000 in TBST) with and without high salt followed by incubation with goat anti-mouse HRP conjugate (1:10,000). Cos-7 cell lysates (1 µg of total protein per lane) were transfected with pQM vectors encoding two different E2-tagged proteins. Detection is performed with anti-E2Tag antibody (5E11) (1:10 000 in TBST) with and without high salt followed by incubation with goat anti-mouse HRP conjugate (1:10,000).*



ab977 at 1/200 dilution staining human HeLa cells by ICC/IF. The HeLa cells were transfected with the fusion DNA construct pQM-NTag/A consisting of E2 tag fused in frame with gene specific cDNA. The cells were fixed with paraformaldehyde and blocked with serum prior to incubation with the antibody for 2 hours. A Cy3 conjugated sheep anti-mouse IgG antibody was used as the secondary.

Immunocytochemistry/ Immunofluorescence - Anti-E2 tag antibody [5E11] (ab977)

This image is courtesy of an Abreview submitted by Dr Ashraf Mannan

**Please note:** All products are "FOR RESEARCH USE ONLY. NOT FOR USE IN DIAGNOSTIC PROCEDURES"

### Our Abpromise to you: Quality guaranteed and expert technical support

- Replacement or refund for products not performing as stated on the datasheet
- Valid for 12 months from date of delivery
- Response to your inquiry within 24 hours
- We provide support in Chinese, English, French, German, Japanese and Spanish
- Extensive multi-media technical resources to help you
- We investigate all quality concerns to ensure our products perform to the highest standards

If the product does not perform as described on this datasheet, we will offer a refund or replacement. For full details of the Abpromise, please visit <https://www.abcam.com/abpromise> or contact our technical team.

### Terms and conditions

- Guarantee only valid for products bought direct from Abcam or one of our authorized distributors