

## Product datasheet

# Anti-E2F2 antibody [2302C4 $\alpha$ ] ab70731

[1 References](#) [1 Image](#)

### Overview

---

<b>Product name</b>	Anti-E2F2 antibody [2302C4 $\alpha$ ]
<b>Description</b>	Mouse monoclonal [2302C4 $\alpha$ ] to E2F2
<b>Host species</b>	Mouse
<b>Tested applications</b>	<b>Suitable for:</b> WB
<b>Species reactivity</b>	<b>Reacts with:</b> Recombinant fragment
<b>Immunogen</b>	Recombinant fragment derived from internal sequence of human E2F2.
<b>Positive control</b>	Recombinant human E2F2.
<b>General notes</b>	<p>The Life Science industry has been in the grips of a reproducibility crisis for a number of years. Abcam is leading the way in addressing this with our range of recombinant monoclonal antibodies and knockout edited cell lines for gold-standard validation. Please check that this product meets your needs before purchasing.</p> <p>If you have any questions, special requirements or concerns, please send us an inquiry and/or contact our Support team ahead of purchase. Recommended alternatives for this product can be found below, along with publications, customer reviews and Q&amp;As</p>

### Properties

---

<b>Form</b>	Liquid
<b>Storage instructions</b>	Shipped at 4°C. Upon delivery aliquot and store at -20°C. Avoid freeze / thaw cycles.
<b>Storage buffer</b>	pH: 7.40 Preservative: 0.05% Sodium azide Constituents: 1% BSA, PBS
<b>Purity</b>	Protein G purified
<b>Purification notes</b>	ab70731 was purified using protein G column chromatography from culture supernatant of hybridoma cultured in a medium containing bovine IgG-depleted (approximately 95%) fetal bovine serum and filtered through a 0.22 $\mu$ m membrane.
<b>Clonality</b>	Monoclonal
<b>Clone number</b>	2302C4 $\alpha$
<b>Isotype</b>	IgG2a

## Applications

### The Abpromise guarantee

Our **Abpromise guarantee** covers the use of ab70731 in the following tested applications.

The application notes include recommended starting dilutions; optimal dilutions/concentrations should be determined by the end user.

Application	Abreviews	Notes
WB		Use at an assay dependent concentration. Predicted molecular weight: 48 kDa.

## Target

### Function

Transcription activator that binds DNA cooperatively with DP proteins through the E2 recognition site, 5'-TTTC[CG]CGC-3' found in the promoter region of a number of genes whose products are involved in cell cycle regulation or in DNA replication. The DRTF1/E2F complex functions in the control of cell-cycle progression from g1 to s phase. E2F-2 binds specifically to RB1 protein, in a cell-cycle dependent manner.

### Tissue specificity

Highest level of expression is found in placenta, low levels are found in lung. Found as well in many immortalized cell lines derived from tumor samples.

### Sequence similarities

Belongs to the E2F/DP family.

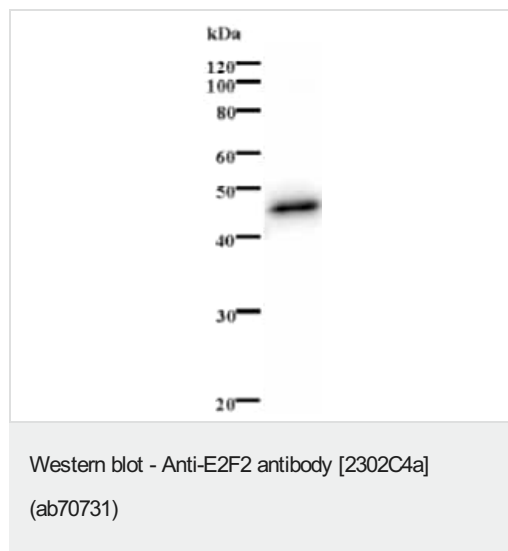
### Post-translational modifications

Phosphorylated by CDK2 and cyclin A-CDK2 in the S-phase.

### Cellular localization

Nucleus.

## Images



Anti-E2F2 antibody [2302C4a] (ab70731) + immunising recombinant protein

**Predicted band size:** 48 kDa

**Observed band size:** 48 kDa

**Please note:** All products are "FOR RESEARCH USE ONLY. NOT FOR USE IN DIAGNOSTIC PROCEDURES"

**Our Abpromise to you: Quality guaranteed and expert technical support**

- Replacement or refund for products not performing as stated on the datasheet
- Valid for 12 months from date of delivery
- Response to your inquiry within 24 hours
  
- We provide support in Chinese, English, French, German, Japanese and Spanish
- Extensive multi-media technical resources to help you
- We investigate all quality concerns to ensure our products perform to the highest standards

If the product does not perform as described on this datasheet, we will offer a refund or replacement. For full details of the Abpromise, please visit <https://www.abcam.com/abpromise> or contact our technical team.

### **Terms and conditions**

---

- Guarantee only valid for products bought direct from Abcam or one of our authorized distributors