


Product datasheet

Anti-EAAT4 antibody ab41650

★★★★★ [5 Abreviews](#) [3 References](#) [1 Image](#)

Overview

Product name	Anti-EAAT4 antibody
Description	Rabbit polyclonal to EAAT4
Host species	Rabbit
Tested applications	Suitable for: WB
Species reactivity	Reacts with: Mouse Predicted to work with: Rat, Dog, Human 
Immunogen	Synthetic peptide conjugated to KLH derived from within residues 500 to the C-terminus of Human EAAT4. Read Abcam's proprietary immunogen policy (Peptide available as ab45367 .)
Positive control	This antibody gave a positive signal in Mouse Cerebellum tissue lysate.
General notes	<p>The Life Science industry has been in the grips of a reproducibility crisis for a number of years. Abcam is leading the way in addressing this with our range of recombinant monoclonal antibodies and knockout edited cell lines for gold-standard validation. Please check that this product meets your needs before purchasing.</p> <p>If you have any questions, special requirements or concerns, please send us an inquiry and/or contact our Support team ahead of purchase. Recommended alternatives for this product can be found below, along with publications, customer reviews and Q&As</p>

Properties

Form	Liquid
Storage instructions	Shipped at 4°C. Store at +4°C short term (1-2 weeks). Upon delivery aliquot. Store at -20°C or -80°C. Avoid freeze / thaw cycle.
Storage buffer	pH: 7.40 Preservative: 0.02% Sodium azide Constituent: PBS Batches of this product that have a concentration < 1mg/ml may have BSA added as a stabilising agent. If you would like information about the formulation of a specific lot, please contact our scientific support team who will be happy to help.
Purity	Immunogen affinity purified
Clonality	Polyclonal

Isotype

IgG

Applications

The Abpromise guarantee

Our **Abpromise guarantee** covers the use of ab41650 in the following tested applications.

The application notes include recommended starting dilutions; optimal dilutions/concentrations should be determined by the end user.

Application	Abreviews	Notes
WB		Use a concentration of 1 mg/ml. Detects a band of approximately 66 kDa (predicted molecular weight: 61 kDa).

Target

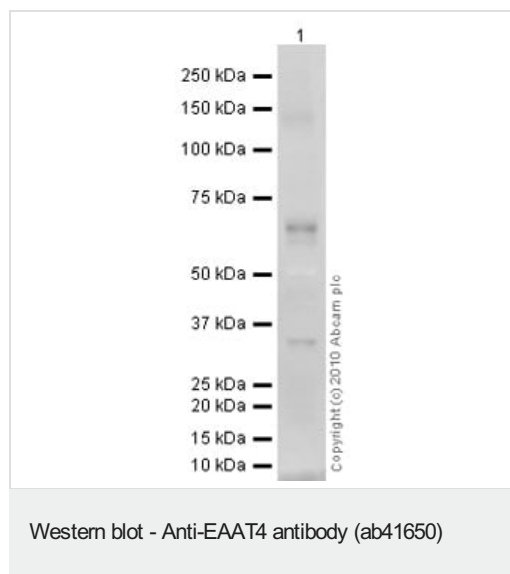
Relevance

EAAT4 is expressed predominantly in the cerebellum (Purkinje cells) and weakly in the forebrain, where it transports L-glutamate, L-aspartate and D-aspartate, acting as a symport by cotransporting sodium. EAAT4 may function as a combined transporter and inhibitory glutamate receptor and also functions as an anion-selective ion channel.

Cellular localization

Membrane; multi-pass membrane protein.

Images



Anti-EAAT4 antibody (ab41650) at 1 µg/ml + Cerebellum Mouse Tissue Lysate at 10 µg

Secondary

Goat polyclonal to Rabbit IgG - H&L - Pre-Adsorbed (HRP) at 1/3000 dilution

Performed under reducing conditions.

Predicted band size: 61 kDa

Observed band size: 66 kDa

Additional bands at: 35 kDa. We are unsure as to the identity of these extra bands.

Exposure time: 12 minutes

Please note: All products are "FOR RESEARCH USE ONLY. NOT FOR USE IN DIAGNOSTIC PROCEDURES"

Our Abpromise to you: Quality guaranteed and expert technical support

- Replacement or refund for products not performing as stated on the datasheet
- Valid for 12 months from date of delivery
- Response to your inquiry within 24 hours
- We provide support in Chinese, English, French, German, Japanese and Spanish
- Extensive multi-media technical resources to help you
- We investigate all quality concerns to ensure our products perform to the highest standards

If the product does not perform as described on this datasheet, we will offer a refund or replacement. For full details of the Abpromise, please visit <https://www.abcam.com/abpromise> or contact our technical team.

Terms and conditions

- Guarantee only valid for products bought direct from Abcam or one of our authorized distributors