

Product datasheet

Anti-EAF2 antibody ab237753

3 Images

Overview

Product name	Anti-EAF2 antibody
Description	Rabbit polyclonal to EAF2
Host species	Rabbit
Tested applications	Suitable for: WB, IHC-P, ICC/IF
Species reactivity	Reacts with: Mouse, Human
Immunogen	Recombinant fragment corresponding to Human EAF2 aa 6-100. Database link: Q96CJ1
Positive control	WB: Mouse kidney tissue lysate. IHC-P: Human appendix tissue. ICC/IF: HepG2 cells.
General notes	<p>The Life Science industry has been in the grips of a reproducibility crisis for a number of years. Abcam is leading the way in addressing this with our range of recombinant monoclonal antibodies and knockout edited cell lines for gold-standard validation. Please check that this product meets your needs before purchasing.</p> <p>If you have any questions, special requirements or concerns, please send us an inquiry and/or contact our Support team ahead of purchase. Recommended alternatives for this product can be found below, along with publications, customer reviews and Q&As</p>

Properties

Form	Liquid
Storage instructions	Shipped at 4°C. Store at +4°C short term (1-2 weeks). Upon delivery aliquot. Store at -20°C long term. Avoid freeze / thaw cycle.
Storage buffer	pH: 7.40 Preservative: 0.03% Proclin 300 Constituents: 50% Glycerol (glycerin, glycerine), PBS
Purity	Protein G purified
Purification notes	Purity greater than 95%.
Clonality	Polyclonal
Isotype	IgG

Applications

The Abpromise guarantee

Our **Abpromise guarantee** covers the use of ab237753 in the following tested applications.

The application notes include recommended starting dilutions; optimal dilutions/concentrations should be determined by the end user.

Application	Abreviews	Notes
WB		1/500 - 1/5000. Predicted molecular weight: 29 kDa.
IHC-P		1/1000 - 1/2000. Perform heat mediated antigen retrieval with citrate buffer pH 6 before commencing with IHC staining protocol.
ICC/IF		1/50 - 1/500.

Target

Function

Acts as a transcriptional transactivator of TCEA1 elongation activity (By similarity). Acts as a transcriptional transactivator of ELL and ELL2 elongation activities. Potent inducer of apoptosis in prostatic and non-prostatic cell lines. Inhibits prostate tumor growth in vivo.

Tissue specificity

Expressed in heart, brain, placenta, lung, skeletal muscle, kidney, pancreas, spleen, prostate, testis, small intestine, colon, adrenal, bone marrow, lymph node, spinal gland, stomach, thyroid, trachea, thymus, liver and leukocytes.

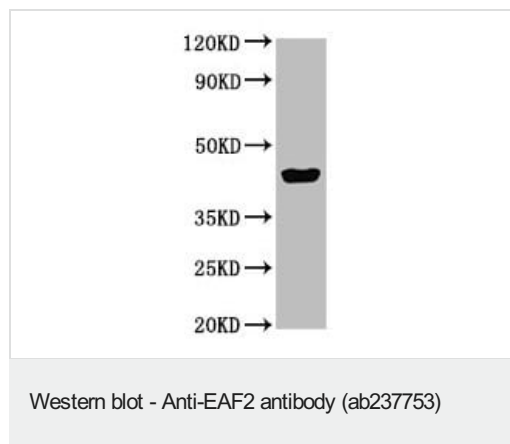
Sequence similarities

Belongs to the EAF family.

Cellular localization

Nucleus speckle. Colocalizes with ELL to nuclear speckles.

Images

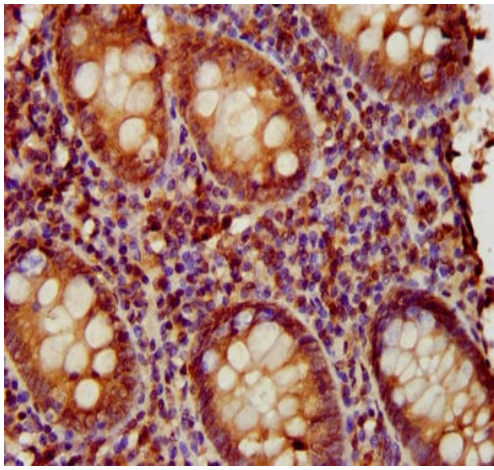


Anti-EAF2 antibody (ab237753) at 1/500 dilution + Mouse kidney tissue lysate

Secondary

Goat polyclonal to rabbit IgG at 1/50000 dilution

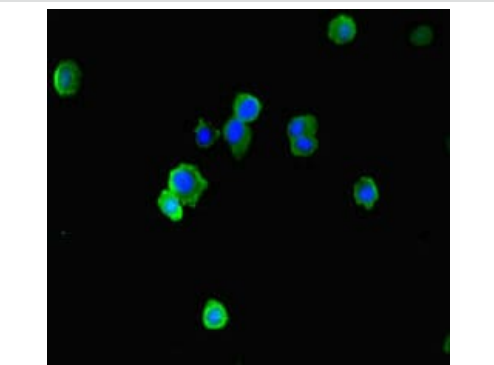
Predicted band size: 29 kDa



Immunohistochemistry (Formalin/PFA-fixed paraffin-embedded sections) - Anti-EAF2 antibody (ab237753)

Paraffin-embedded human appendix tissue stained for EAF2 using ab237753 at 1/1,000 dilution in immunohistochemical analysis.

After dewaxing and hydration, antigen retrieval was mediated by high pressure in a citrate buffer (pH 6.0). Section was blocked with 10% normal goat serum 30 minutes at RT. Then primary antibody (1% BSA) was incubated at 4°C overnight. The primary is detected by a biotinylated secondary antibody and visualized tissue using an HRP conjugated SP system.



Immunocytochemistry/ Immunofluorescence - Anti-EAF2 antibody (ab237753)

HepG2 (Human liver hepatocellular carcinoma cell line) cells stained for EAF2 (green) using ab237753 at 1/100 dilution in ICC/IF, followed by an Alexa-Fluor® 488 conjugated Goat Anti-Rabbit IgG (H+L).

Please note: All products are "FOR RESEARCH USE ONLY. NOT FOR USE IN DIAGNOSTIC PROCEDURES"

Our Abpromise to you: Quality guaranteed and expert technical support

- Replacement or refund for products not performing as stated on the datasheet
- Valid for 12 months from date of delivery
- Response to your inquiry within 24 hours

- We provide support in Chinese, English, French, German, Japanese and Spanish
- Extensive multi-media technical resources to help you
- We investigate all quality concerns to ensure our products perform to the highest standards

If the product does not perform as described on this datasheet, we will offer a refund or replacement. For full details of the Abpromise, please visit <https://www.abcam.com/abpromise> or contact our technical team.

Terms and conditions

- Guarantee only valid for products bought direct from Abcam or one of our authorized distributors