


Product datasheet

Anti-EB2 antibody ab234843

2 Images

Overview

Product name	Anti-EB2 antibody
Description	Rabbit polyclonal to EB2
Host species	Rabbit
Tested applications	Suitable for: WB, ICC/IF
Species reactivity	Reacts with: Mouse, Human Predicted to work with: Rat, Chicken, Cow, Orangutan 
Immunogen	Recombinant fragment corresponding to Human EB2 aa 159-240. Database link: Q15555
Positive control	WB: Mouse brain tissue lysate. ICC/IF: HepG2 cells.
General notes	<p>The Life Science industry has been in the grips of a reproducibility crisis for a number of years. Abcam is leading the way in addressing this with our range of recombinant monoclonal antibodies and knockout edited cell lines for gold-standard validation. Please check that this product meets your needs before purchasing.</p> <p>If you have any questions, special requirements or concerns, please send us an inquiry and/or contact our Support team ahead of purchase. Recommended alternatives for this product can be found below, along with publications, customer reviews and Q&As</p>

Properties

Form	Liquid
Storage instructions	Shipped at 4°C. Store at +4°C short term (1-2 weeks). Upon delivery aliquot. Store at -20°C long term. Avoid freeze / thaw cycle.
Storage buffer	pH: 7.40 Preservative: 0.03% Proclin 300 Constituents: PBS, 50% Glycerol (glycerin, glycerine)
Purity	Protein G purified
Purification notes	Purity >95%.
Clonality	Polyclonal
Isotype	IgG

Applications

The Abpromise guarantee

Our **Abpromise guarantee** covers the use of ab234843 in the following tested applications.

The application notes include recommended starting dilutions; optimal dilutions/concentrations should be determined by the end user.

Application	Abreviews	Notes
WB		1/500 - 1/5000. Predicted molecular weight: 37 kDa.
ICC/IF		1/50 - 1/200.

Target

Function

May be involved in microtubule polymerization, and spindle function by stabilizing microtubules and anchoring them at centrosomes. May play a role in cell migration.

Tissue specificity

Expressed in different tumor cell lines. Up-regulated in activated B- and T-lymphocytes.

Sequence similarities

Belongs to the MAPRE family.

Contains 1 CH (calponin-homology) domain.

Contains 1 EB1 C-terminal domain.

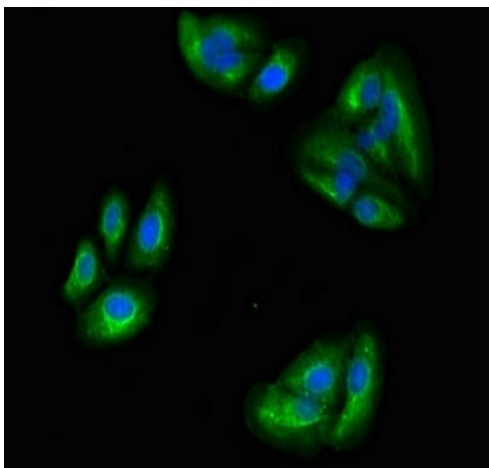
Domain

Composed of two functionally independent domains. The N-terminal domain forms an hydrophobic cleft involved in microtubule binding and the C-terminal is involved in the formation of mutually exclusive complexes with APC and DCTN1.

Cellular localization

Cytoplasm > cytoskeleton. Associated with the microtubule network. Accumulates at the plus end of microtubules.

Images



HepG2 (human liver hepatocellular carcinoma cell line) cells labeling EB2 (green) using ab234843 at 1/100 dilution in ICC/IF. Alexa Fluor® 488-conjugated Goat Anti-Rabbit IgG (H+L) was used as the secondary antibody.

Immunocytochemistry/ Immunofluorescence - Anti-EB2 antibody (ab234843)



Western blot - Anti-EB2 antibody (ab234843)

Anti-EB2 antibody (ab234843) at 1/500 dilution + Mouse brain tissue lysate

Secondary

Goat polyclonal to rabbit IgG at 1/50000 dilution

Predicted band size: 37 kDa

Please note: All products are "FOR RESEARCH USE ONLY. NOT FOR USE IN DIAGNOSTIC PROCEDURES"

Our Abpromise to you: Quality guaranteed and expert technical support

- Replacement or refund for products not performing as stated on the datasheet
- Valid for 12 months from date of delivery
- Response to your inquiry within 24 hours
- We provide support in Chinese, English, French, German, Japanese and Spanish
- Extensive multi-media technical resources to help you
- We investigate all quality concerns to ensure our products perform to the highest standards

If the product does not perform as described on this datasheet, we will offer a refund or replacement. For full details of the Abpromise, please visit <https://www.abcam.com/abpromise> or contact our technical team.

Terms and conditions

- Guarantee only valid for products bought direct from Abcam or one of our authorized distributors