

## Product datasheet

# Anti-EBF1 antibody [EPR4183] ab108369

Recombinant RabMAb

[8 References](#) [4 Images](#)

### Overview

<b>Product name</b>	Anti-EBF1 antibody [EPR4183]
<b>Description</b>	Rabbit monoclonal [EPR4183] to EBF1
<b>Host species</b>	Rabbit
<b>Specificity</b>	This antibody also recognises EBF3 protein.
<b>Tested applications</b>	<b>Suitable for:</b> WB <b>Unsuitable for:</b> ICC/IF, IHC-P or IP
<b>Species reactivity</b>	<b>Reacts with:</b> Mouse, Rat, Human
<b>Immunogen</b>	Synthetic peptide. This information is proprietary to Abcam and/or its suppliers.
<b>Positive control</b>	WB: Raji, Daudi and 3T3-L1 cell lysates. Mouse and rat spleen and lymph node tissue lysates.
<b>General notes</b>	<p>This product is a recombinant monoclonal antibody, which offers several advantages including:</p> <ul style="list-style-type: none"><li>- High batch-to-batch consistency and reproducibility</li><li>- Improved sensitivity and specificity</li><li>- Long-term security of supply</li><li>- Animal-free production</li></ul> <p>For more information <a href="#">see here</a>.</p> <p>Our RabMAb<sup>®</sup> technology is a patented hybridoma-based technology for making rabbit monoclonal antibodies. For details on our patents, please refer to <a href="#">RabMAb<sup>®</sup> patents</a>.</p> <p>Rat: We have preliminary internal testing data to indicate this antibody may not react with this species. Please contact us for more information.</p>

### Properties

<b>Form</b>	Liquid
<b>Storage instructions</b>	Shipped at 4°C. Store at +4°C short term (1-2 weeks). Upon delivery aliquot. Store at -20°C. Avoid freeze / thaw cycle.
<b>Storage buffer</b>	pH: 7.20 Preservative: 0.01% Sodium azide Constituents: 40% Glycerol (glycerin, glycerine), 0.05% BSA, 59% PBS
<b>Purity</b>	Protein A purified

<b>Clonality</b>	Monoclonal
<b>Clone number</b>	EPR4183
<b>Isotype</b>	IgG

## Applications

**The Abpromise guarantee** Our **Abpromise guarantee** covers the use of ab108369 in the following tested applications. The application notes include recommended starting dilutions; optimal dilutions/concentrations should be determined by the end user.

Application	Abreviews	Notes
WB		1/5000. Predicted molecular weight: 64 kDa. <b>For unpurified use at 1/10000.</b>

**Application notes** Is unsuitable for ICC/IF, IHC-P or IP.

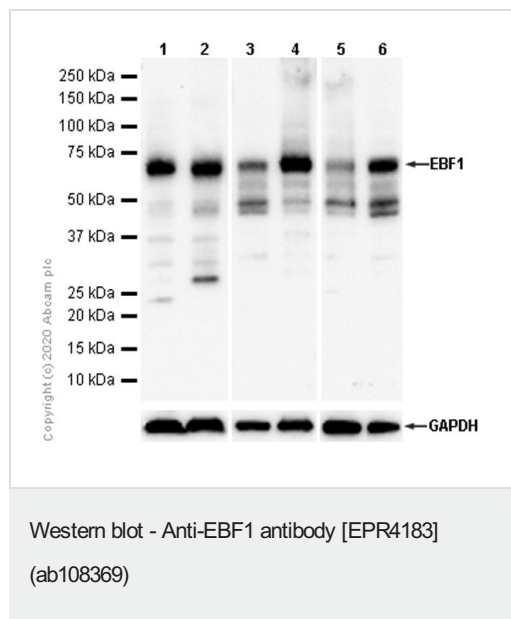
## Target

**Function** Transcriptional activator which recognizes variations of the palindromic sequence 5'-ATTCCCNNGGGAATT-3'.

**Sequence similarities** Belongs to the COE family.  
Contains 1 IPT/TIG domain.

**Cellular localization** Nucleus.

## Images



**All lanes** : Anti-EBF1 antibody [EPR4183] (ab108369) at 1/1000 dilution (purified)

**Lane 1** : Raji (Human Burkitt's lymphoma B lymphocyte) whole cell lysate

**Lane 2** : Daudi (Human Burkitt's lymphoma lymphoblast) whole cell lysate

**Lane 3** : Mouse spleen lysate

**Lane 4** : Mouse lymph node lysate

**Lane 5** : Rat spleen lysate

**Lane 6** : Rat lymph node lysate

Lysates/proteins at 20 µg per lane.

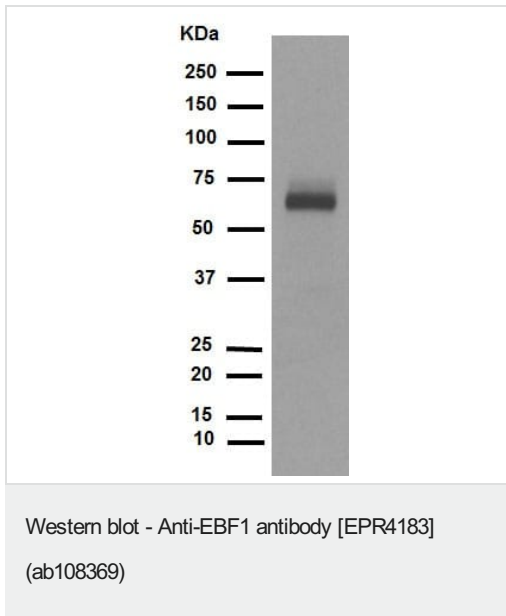
### Secondary

**All lanes** : Goat Anti-Rabbit IgG H&L (HRP) (**ab97051**) at 1/20000 dilution

**Predicted band size:** 64 kDa

**Observed band size:** 64 kDa

We are unsure how to define the extra bands.



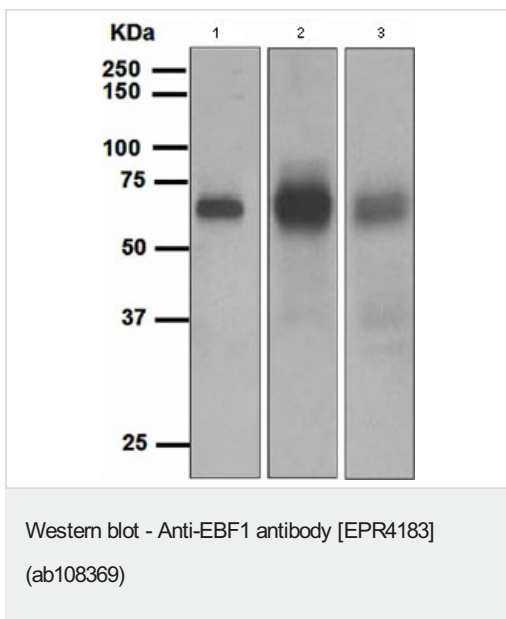
Anti-EBF1 antibody [EPR4183] (ab108369) at 1/1000 dilution (unpurified) + Raji cell lysate at 20  $\mu$ g

**Secondary**

Goat Anti-Rabbit IgG, (H+L), HRP-conjugated at 20  $\mu$ g

**Predicted band size:** 64 kDa

**Blocking/Dilution buffer:** 5% NFDM/TBST.



**All lanes :** Anti-EBF1 antibody [EPR4183] (ab108369) at 1/1000 dilution (unpurified)

**Lane 1 :** Raji cell lysate

**Lane 2 :** Daudi cell lysate

**Lane 3 :** 3T3-L1 cell lysate

Lysates/proteins at 10  $\mu$ g per lane.

**Predicted band size:** 64 kDa

### Why choose a recombinant antibody?



**Research with confidence**  
Consistent and reproducible results



**Long-term and scalable supply**  
Recombinant technology



**Success from the first experiment**  
Confirmed specificity



**Ethical standards compliant**  
Animal-free production

Anti-EBF1 antibody [EPR4183] (ab108369)

**Please note:** All products are "FOR RESEARCH USE ONLY. NOT FOR USE IN DIAGNOSTIC PROCEDURES"

### Our Abpromise to you: Quality guaranteed and expert technical support

---

- Replacement or refund for products not performing as stated on the datasheet
- Valid for 12 months from date of delivery
- Response to your inquiry within 24 hours
- We provide support in Chinese, English, French, German, Japanese and Spanish
- Extensive multi-media technical resources to help you
- We investigate all quality concerns to ensure our products perform to the highest standards

If the product does not perform as described on this datasheet, we will offer a refund or replacement. For full details of the Abpromise, please visit <https://www.abcam.com/abpromise> or contact our technical team.

### Terms and conditions

---

- Guarantee only valid for products bought direct from Abcam or one of our authorized distributors