

### Anti-EBNA 3A antibody ab16126

★★★★★ [1 Abreviews](#) [11 References](#) [1 Image](#)

#### Overview

<b>Product name</b>	Anti-EBNA 3A antibody
<b>Description</b>	Sheep polyclonal to EBNA 3A
<b>Host species</b>	Sheep
<b>Specificity</b>	This antibody is specific for the Epstein Barr Virus Nuclear Antigen 3A.
<b>Tested applications</b>	<b>Suitable for:</b> ICC, Dot blot, ELISA, IHC-Fr, WB
<b>Species reactivity</b>	<b>Reacts with:</b> Epstein-Barr virus
<b>Immunogen</b>	Recombinant full length protein. Recombinant EBNA-3A protein
<b>Positive control</b>	WB: EBV infected tissues and cells
<b>General notes</b>	Sheep were immunized with recombinant EBNA-3A protein

The Life Science industry has been in the grips of a reproducibility crisis for a number of years. Abcam is leading the way in addressing this with our range of recombinant monoclonal antibodies and knockout edited cell lines for gold-standard validation. Please check that this product meets your needs before purchasing.

If you have any questions, special requirements or concerns, please send us an inquiry and/or contact our Support team ahead of purchase. Recommended alternatives for this product can be found below, along with publications, customer reviews and Q&As

#### Properties

<b>Form</b>	Liquid
<b>Storage instructions</b>	Shipped at 4°C. Upon delivery aliquot and store at -20°C. Avoid freeze / thaw cycles.
<b>Storage buffer</b>	Preservative: 0.08% Sodium azide Constituent: PBS
<b>Purity</b>	Ammonium Sulphate Precipitation
<b>Purification notes</b>	Purified by ammonium sulfate precipitation. This antibody is provided as a 0.2µm sterile filtered solution.
<b>Clonality</b>	Polyclonal
<b>Isotype</b>	IgG

## Applications

### The Abpromise guarantee

Our **Abpromise guarantee** covers the use of ab16126 in the following tested applications.

The application notes include recommended starting dilutions; optimal dilutions/concentrations should be determined by the end user.

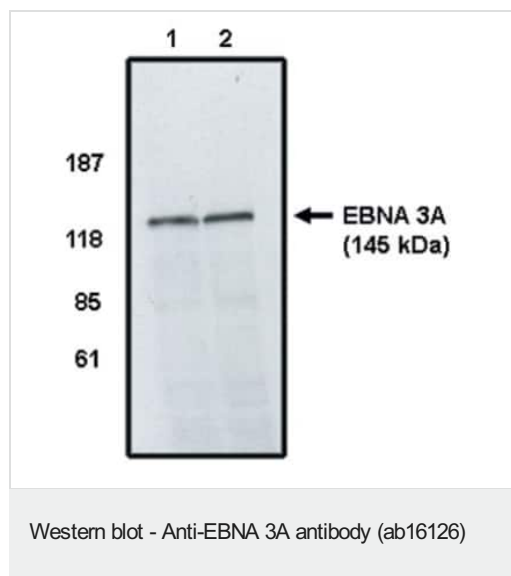
Application	Abreviews	Notes
ICC		Use at an assay dependent concentration.
Dot blot		Use at an assay dependent concentration.
ELISA		Use at an assay dependent concentration.
IHC-Fr		Use at an assay dependent concentration.
WB	★★★★★ (1)	Use a concentration of 0.25 - 1 µg/ml.

## Target

### Relevance

EBNA3A is a latent viral nuclear protein expressed in Epstein Barr Virus (EBV) transformed lymphoblastic cell lines. It is also found in some immunoblastic lymphomas in vivo. This viral nuclear protein is essential for EBV mediated transformation of B lymphocytes. The EBNA3A functions as a transcriptional regulator though the target genes are currently unknown.

## Images



**All lanes :** Anti-EBNA 3A antibody (ab16126)

**All lanes :** Cell line infected with Epstein Barr virus.

**Please note:** All products are "FOR RESEARCH USE ONLY. NOT FOR USE IN DIAGNOSTIC PROCEDURES"

### Our Abpromise to you: Quality guaranteed and expert technical support

- Replacement or refund for products not performing as stated on the datasheet

- Valid for 12 months from date of delivery
- Response to your inquiry within 24 hours
- We provide support in Chinese, English, French, German, Japanese and Spanish
- Extensive multi-media technical resources to help you
- We investigate all quality concerns to ensure our products perform to the highest standards

If the product does not perform as described on this datasheet, we will offer a refund or replacement. For full details of the Abpromise, please visit <https://www.abcam.com/abpromise> or contact our technical team.

#### **Terms and conditions**

---

- Guarantee only valid for products bought direct from Abcam or one of our authorized distributors