

# Anti-Ebola virus antibody ab243283

[1 Image](#)

### Overview

---

<b>Product name</b>	Anti-Ebola virus antibody
<b>Description</b>	Sheep polyclonal to Ebola virus
<b>Host species</b>	Sheep
<b>Specificity</b>	This antibody is specific for the Zaire ebola virus matrix protein (VP40), nucleoprotein (NP) and glycoprotein (GP). The antibody has not been tested on other filovirus proteins.
<b>Tested applications</b>	<b>Suitable for:</b> WB
<b>Species reactivity</b>	<b>Reacts with:</b> Zaire ebolavirus
<b>Immunogen</b>	Tissue, cells or virus corresponding to Ebola virus. Raised against recombinant EBOV VLPs, expressed in mammalian cells. These VLPs are comprised of EBOV Nucleoprotein (NP), glycoprotein (GP) and the VP40 protein.
<b>Positive control</b>	WB: Zaire Ebola VLP.
<b>General notes</b>	<p>The Life Science industry has been in the grips of a reproducibility crisis for a number of years. Abcam is leading the way in addressing this with our range of recombinant monoclonal antibodies and knockout edited cell lines for gold-standard validation. Please check that this product meets your needs before purchasing.</p> <p>If you have any questions, special requirements or concerns, please send us an inquiry and/or contact our Support team ahead of purchase. Recommended alternatives for this product can be found below, along with publications, customer reviews and Q&amp;As</p>

### Properties

---

<b>Form</b>	Liquid
<b>Storage instructions</b>	Shipped at 4°C. Store at +4°C short term (1-2 weeks). Upon delivery aliquot. Store at -20°C long term. Avoid freeze / thaw cycle.
<b>Storage buffer</b>	pH: 7 Constituent: PBS
	Sterile filtered
<b>Purity</b>	Protein G purified
<b>Clonality</b>	Polyclonal
<b>Isotype</b>	IgG

## Applications

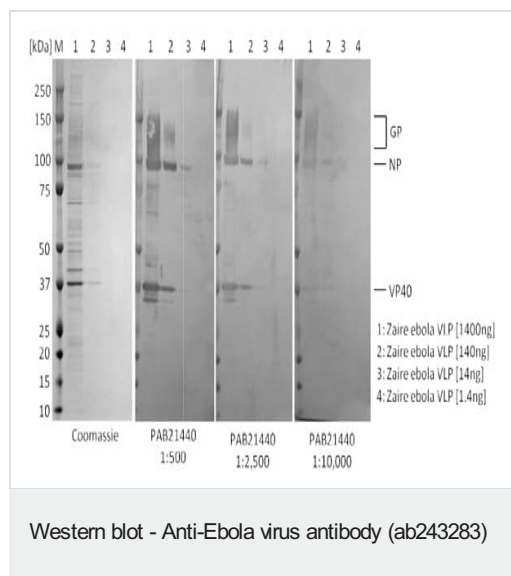
### The Abpromise guarantee

Our **Abpromise guarantee** covers the use of ab243283 in the following tested applications.

The application notes include recommended starting dilutions; optimal dilutions/concentrations should be determined by the end user.

Application	Abreviews	Notes
WB		1/2500.

## Images



Western blot - Anti-Envelope Glycoprotein antibody (ab243283)

**Please note:** All products are "FOR RESEARCH USE ONLY. NOT FOR USE IN DIAGNOSTIC PROCEDURES"

## Our Abpromise to you: Quality guaranteed and expert technical support

- Replacement or refund for products not performing as stated on the datasheet
- Valid for 12 months from date of delivery
- Response to your inquiry within 24 hours
- We provide support in Chinese, English, French, German, Japanese and Spanish
- Extensive multi-media technical resources to help you
- We investigate all quality concerns to ensure our products perform to the highest standards

If the product does not perform as described on this datasheet, we will offer a refund or replacement. For full details of the Abpromise, please visit <https://www.abcam.com/abpromise> or contact our technical team.

## Terms and conditions

- Guarantee only valid for products bought direct from Abcam or one of our authorized distributors