

Product datasheet

Anti-EBV Induced Gene 2/EBI2 antibody - N-terminal ab229568

[1 Image](#)

Overview

Product name	Anti-EBV Induced Gene 2/EBI2 antibody - N-terminal
Description	Rabbit polyclonal to EBV Induced Gene 2/EBI2 - N-terminal
Host species	Rabbit
Tested applications	Suitable for: WB
Species reactivity	Reacts with: Human
Immunogen	Synthetic peptide within Human EBV Induced Gene 2/EBI2 (N terminal). The exact sequence is proprietary. Conjugated to a protein carrier. Database link: P32249
Positive control	WB: Unboiled eGFP-tagged EBV Induced Gene 2/EBI2 transfected HEK-293T whole cell extract.
General notes	<p>The Life Science industry has been in the grips of a reproducibility crisis for a number of years. Abcam is leading the way in addressing this with our range of recombinant monoclonal antibodies and knockout edited cell lines for gold-standard validation. Please check that this product meets your needs before purchasing.</p> <p>If you have any questions, special requirements or concerns, please send us an inquiry and/or contact our Support team ahead of purchase. Recommended alternatives for this product can be found below, along with publications, customer reviews and Q&As</p>

Properties

Form	Liquid
Storage instructions	Shipped at 4°C. Store at +4°C short term (1-2 weeks). Upon delivery aliquot. Store at -20°C long term. Avoid freeze / thaw cycle.
Storage buffer	pH: 7.00 Preservative: 0.025% Proclin 300 Constituents: 79% PBS, 20% Glycerol (glycerin, glycerine)
Purity	Immunogen affinity purified
Clonality	Polyclonal
Isotype	IgG

Applications

The Abpromise guarantee

Our **Abpromise guarantee** covers the use of ab229568 in the following tested applications.

The application notes include recommended starting dilutions; optimal dilutions/concentrations should be determined by the end user.

Application	Abreviews	Notes
WB		1/500 - 1/3000. Predicted molecular weight: 41 kDa.

Target

Function

Orphan receptor that plays a central role during humoral immunity. Promotes activated B-cell localization in the outer follicle and interfollicular regions. Its specific expression during B-cell maturation helps position B-cells appropriately for mounting T-dependent antibody responses (By similarity). Signals constitutively through G(i)-alpha, but not G(s)-alpha or G(q)-alpha.

Tissue specificity

Expressed abundantly in lymphoid tissues such as spleen and lymph node, and in B- and T-lymphocytes. Also highly expressed in lung, heart and gastrointestinal tract, and weakly expressed in the urogenital system and brain.

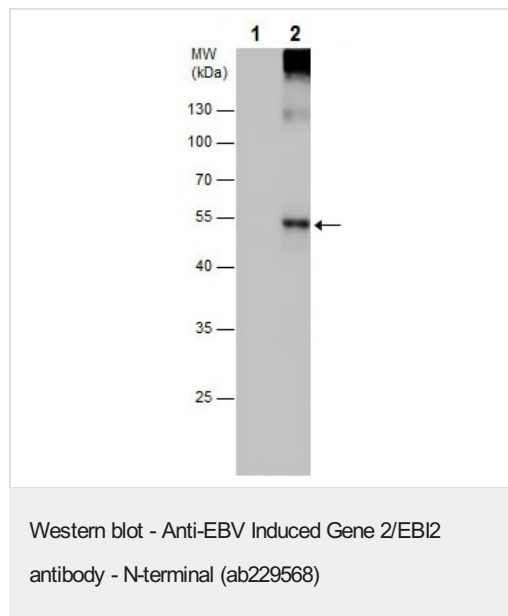
Sequence similarities

Belongs to the G-protein coupled receptor 1 family.

Cellular localization

Cell membrane.

Images



All lanes : Anti-EBV Induced Gene 2/EBI2 antibody - N-terminal (ab229568) at 1/1000 dilution

Lane 1 : Unboiled non-transfected HEK-293T (human epithelial cell line from embryonic kidney transformed with large T antigen) whole cell extract

Lane 2 : Unboiled eGFP-tagged EBV Induced Gene 2/EBI2 transfected HEK-293T whole cell extract

Lysates/proteins at 30 µg per lane.

Predicted band size: 41 kDa

10% SDS-PAGE gel.

Please note: All products are "FOR RESEARCH USE ONLY. NOT FOR USE IN DIAGNOSTIC PROCEDURES"

Our Abpromise to you: Quality guaranteed and expert technical support

- Replacement or refund for products not performing as stated on the datasheet
- Valid for 12 months from date of delivery
- Response to your inquiry within 24 hours

- We provide support in Chinese, English, French, German, Japanese and Spanish
- Extensive multi-media technical resources to help you
- We investigate all quality concerns to ensure our products perform to the highest standards

If the product does not perform as described on this datasheet, we will offer a refund or replacement. For full details of the Abpromise, please visit <https://www.abcam.com/abpromise> or contact our technical team.

Terms and conditions

- Guarantee only valid for products bought direct from Abcam or one of our authorized distributors