




Product datasheet

Anti-ECEL1 antibody ab234710

4 Images

Overview

Product name	Anti-ECEL1 antibody
Description	Rabbit polyclonal to ECEL1
Host species	Rabbit
Tested applications	Suitable for: ICC/IF, IHC-P
Species reactivity	Reacts with: Human Predicted to work with: Mouse, Rat 
Immunogen	Recombinant fragment corresponding to Human ECEL1 aa 400 to the C-terminus. Database link: O95672  Run BLAST with  Run BLAST with
Positive control	IHC-P: Human kidney and cervical cancer tissue. ICC/IF: HepG2 and HeLa cells.
General notes	<p>The Life Science industry has been in the grips of a reproducibility crisis for a number of years. Abcam is leading the way in addressing this with our range of recombinant monoclonal antibodies and knockout edited cell lines for gold-standard validation. Please check that this product meets your needs before purchasing.</p> <p>If you have any questions, special requirements or concerns, please send us an inquiry and/or contact our Support team ahead of purchase. Recommended alternatives for this product can be found below, along with publications, customer reviews and Q&As</p>

Properties

Form	Liquid
Storage instructions	Shipped at 4°C. Store at +4°C short term (1-2 weeks). Upon delivery aliquot. Store at -20°C long term. Avoid freeze / thaw cycle.
Storage buffer	pH: 7.40 Preservative: 0.03% Proclin 300 Constituents: PBS, 50% Glycerol (glycerin, glycerine)
Purity	Protein G purified
Purification notes	Purity >95%.
Clonality	Polyclonal
Isotype	IgG

Applications

The Abpromise guarantee

Our **Abpromise guarantee** covers the use of ab234710 in the following tested applications.

The application notes include recommended starting dilutions; optimal dilutions/concentrations should be determined by the end user.

Application	Abreviews	Notes
ICC/IF		1/50 - 1/200.
IHC-P		1/20 - 1/200.

Target

Function

May contribute to the degradation of peptide hormones and be involved in the inactivation of neuronal peptides.

Tissue specificity

Highly expressed in the CNS, in particular in putamen, spinal cord, medulla and subthalamic nucleus. A strong signal was also detected in uterine subepithelial cells and around renal blood vessels. Detected at lower levels in amygdala, caudate, thalamus, pancreas and skeletal muscle. Detected at very low levels in substantia nigra, cerebellum, cortex, corpus callosum and hippocampus.

Sequence similarities

Belongs to the peptidase M13 family.

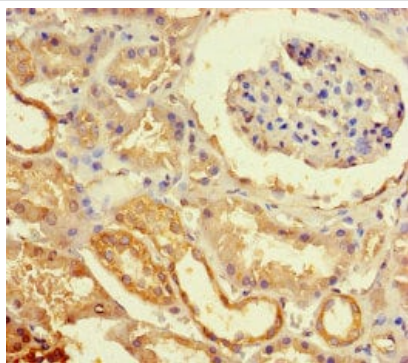
Post-translational modifications

N-glycosylated.

Cellular localization

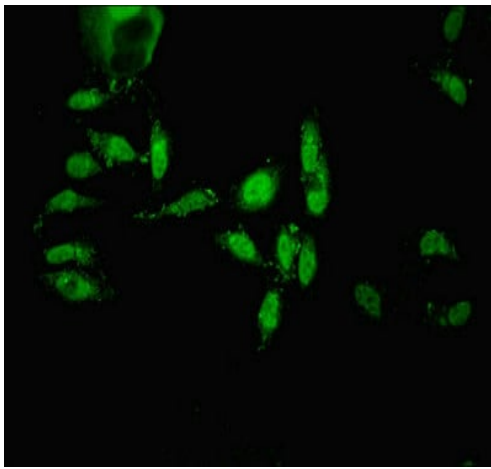
Membrane.

Images



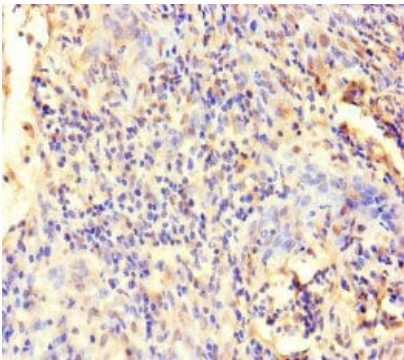
Paraffin-embedded human kidney tissue stained for ECEL1 using ab234710 at 1/100 dilution in immunohistochemical analysis.

Immunohistochemistry (Formalin/PFA-fixed paraffin-embedded sections) - Anti-ECEL1 antibody (ab234710)



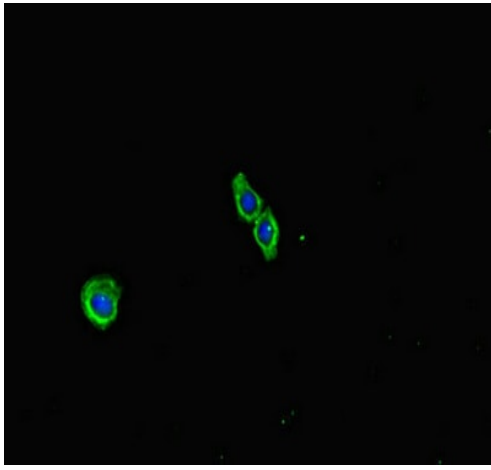
HeLa (human epithelial cell line from cervix adenocarcinoma) cells stained for ECEL1 (green) using ab234710 at 1/100 dilution in ICC/IF. Secondary antibody is Alexa Fluor® 488-conjugated Goat Anti-Rabbit IgG (H+L).

Immunocytochemistry/ Immunofluorescence - Anti-ECEL1 antibody (ab234710)



Paraffin-embedded human cervical cancer tissue stained for ECEL1 using ab234710 at 1/100 dilution in immunohistochemical analysis.

Immunohistochemistry (Formalin/PFA-fixed paraffin-embedded sections) - Anti-ECEL1 antibody (ab234710)



Immunocytochemistry/ Immunofluorescence - Anti-ECE1 antibody (ab234710)

HepG2 (human liver hepatocellular carcinoma cell line) cells stained for ECE1 (green) using ab234710 at 1/100 dilution in ICC/IF. Secondary antibody is Alexa Fluor® 488-conjugated Goat Anti-Rabbit IgG (H+L).

Please note: All products are "FOR RESEARCH USE ONLY. NOT FOR USE IN DIAGNOSTIC PROCEDURES"

Our Abpromise to you: Quality guaranteed and expert technical support

- Replacement or refund for products not performing as stated on the datasheet
- Valid for 12 months from date of delivery
- Response to your inquiry within 24 hours
- We provide support in Chinese, English, French, German, Japanese and Spanish
- Extensive multi-media technical resources to help you
- We investigate all quality concerns to ensure our products perform to the highest standards

If the product does not perform as described on this datasheet, we will offer a refund or replacement. For full details of the Abpromise, please visit <https://www.abcam.com/abpromise> or contact our technical team.

Terms and conditions

- Guarantee only valid for products bought direct from Abcam or one of our authorized distributors