


Product datasheet

Anti-ECH1 antibody ab153720

★★★★★ [2 Abreviews](#) [3 References](#) [4 Images](#)

Overview

Product name	Anti-ECH1 antibody
Description	Rabbit polyclonal to ECH1
Host species	Rabbit
Tested applications	Suitable for: WB, ICC/IF
Species reactivity	Reacts with: Mouse, Human Predicted to work with: Pig 
Immunogen	Recombinant fragment, corresponding to a region within amino acids 97-328 of Human ECH1 (Uniprot ID: Q13011).
General notes	<p>The Life Science industry has been in the grips of a reproducibility crisis for a number of years. Abcam is leading the way in addressing this with our range of recombinant monoclonal antibodies and knockout edited cell lines for gold-standard validation. Please check that this product meets your needs before purchasing.</p> <p>If you have any questions, special requirements or concerns, please send us an inquiry and/or contact our Support team ahead of purchase. Recommended alternatives for this product can be found below, along with publications, customer reviews and Q&As</p>

Properties

Form	Liquid
Storage instructions	Shipped at 4°C. Upon delivery aliquot. Store at -20°C or -80°C. Avoid freeze / thaw cycle.
Storage buffer	pH: 7.00 Preservative: 0.01% Thimerosal (merthiolate) Constituents: 1.21% Tris, 0.75% Glycine, 20% Glycerol (glycerin, glycerine)
Purity	Immunogen affinity purified
Clonality	Polyclonal
Isotype	IgG

Applications

The **Abpromise guarantee** Our **Abpromise guarantee** covers the use of ab153720 in the following tested applications.

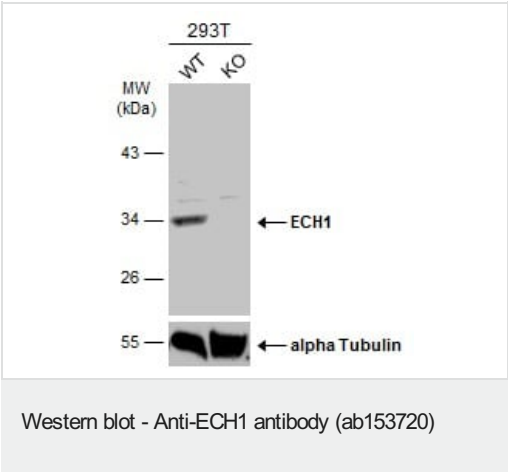
The application notes include recommended starting dilutions; optimal dilutions/concentrations should be determined by the end user.

Application	Abreviews	Notes
WB	★★★★★ (1)	1/500 - 1/3000. Predicted molecular weight: 36 kDa.
ICC/IF		1/100 - 1/1000.

Target

Function	Isomerization of 3-trans,5-cis-dienoyl-CoA to 2-trans,4-trans-dienoyl-CoA.
Pathway	Lipid metabolism; fatty acid beta-oxidation.
Sequence similarities	Belongs to the enoyl-CoA hydratase/isomerase family.
Cellular localization	Mitochondrion. Peroxisome.

Images



All lanes : Anti-ECH1 antibody (ab153720) at 1/2000 dilution

Lane 1 : WT 293T cell extracts

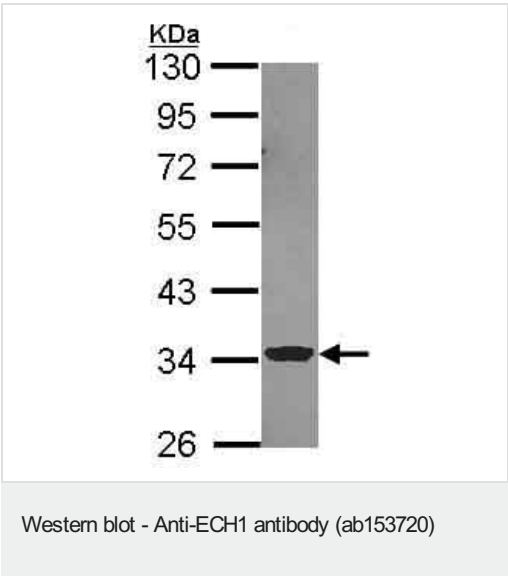
Lane 2 : ECH1 Knockout 293T cell extracts

Lysates/proteins at 30 µg per lane.

Secondary

All lanes : HRP-conjugated anti-rabbit IgG

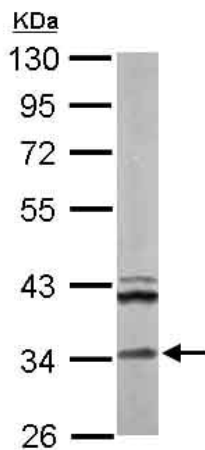
Predicted band size: 36 kDa



Anti-ECH1 antibody (ab153720) at 1/1000 dilution + A549 whole cell lysate at 30 µg

Predicted band size: 36 kDa

10% SDS PAGE

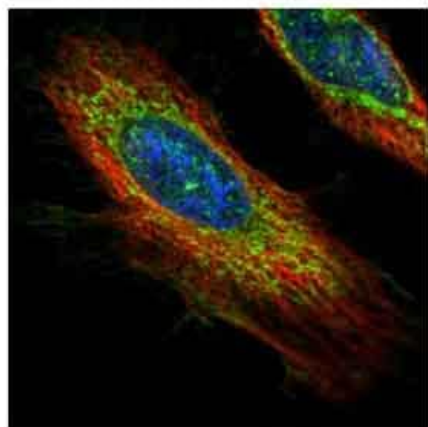


Western blot - Anti-ECH1 antibody (ab153720)

Anti-ECH1 antibody (ab153720) at 1/1000 dilution + Mouse brain whole cell lysate at 50 µg

Predicted band size: 36 kDa

10% SDS PAGE



Immunocytochemistry/ Immunofluorescence - Anti-ECH1 antibody (ab153720)

Confocal immunofluorescent analysis of methanol-fixed HeLa cells, labeling ECH1 with ab153720 at 1/500 dilution (green). Alpha-tubulin filaments labeled in red.

Please note: All products are "FOR RESEARCH USE ONLY. NOT FOR USE IN DIAGNOSTIC PROCEDURES"

Our Abpromise to you: Quality guaranteed and expert technical support

- Replacement or refund for products not performing as stated on the datasheet
- Valid for 12 months from date of delivery
- Response to your inquiry within 24 hours
- We provide support in Chinese, English, French, German, Japanese and Spanish
- Extensive multi-media technical resources to help you
- We investigate all quality concerns to ensure our products perform to the highest standards

If the product does not perform as described on this datasheet, we will offer a refund or replacement. For full details of the Abpromise, please visit <https://www.abcam.com/abpromise> or contact our technical team.

Terms and conditions

- Guarantee only valid for products bought direct from Abcam or one of our authorized distributors