

Product datasheet

Anti-ECH1 antibody [EPR15449(B)] - C-terminal ab189255

KO VALIDATED

Recombinant

RabMAb[®]

8 Images

Overview

Product name	Anti-ECH1 antibody [EPR15449(B)] - C-terminal
Description	Rabbit monoclonal [EPR15449(B)] to ECH1 - C-terminal
Host species	Rabbit
Tested applications	Suitable for: WB, IHC-P, ICC/IF, IP, Flow Cyt (Intra)
Species reactivity	Reacts with: Human
Immunogen	Synthetic peptide. This information is proprietary to Abcam and/or its suppliers.
Positive control	WB: HEK293T, A549, U-2 OS, HeLa and Jurkat cells; Human fetal liver lysate, IHC-P: Human endometrium and kidney tissues. ICC/IF: MCF-7 cells. IP: Human fetal liver lysate. Flow Cyt (intra): Jurkat cells.
General notes	<p>This product is a recombinant monoclonal antibody, which offers several advantages including:</p> <ul style="list-style-type: none"> - High batch-to-batch consistency and reproducibility - Improved sensitivity and specificity - Long-term security of supply - Animal-free production <p>For more information see here.</p> <p>Our RabMAb[®] technology is a patented hybridoma-based technology for making rabbit monoclonal antibodies. For details on our patents, please refer to RabMAb[®] patents.</p>

Properties

Form	Liquid
Storage instructions	Shipped at 4°C. Store at +4°C short term (1-2 weeks). Upon delivery aliquot. Store at -20°C long term. Avoid freeze / thaw cycle.
Storage buffer	<p>pH: 7.2</p> <p>Preservative: 0.01% Sodium azide</p> <p>Constituents: 59% PBS, 40% Glycerol (glycerin, glycerine), 0.05% BSA</p>
Purity	Protein A purified
Clonality	Monoclonal

Clone number EPR15449(B)
Isotype IgG

Applications

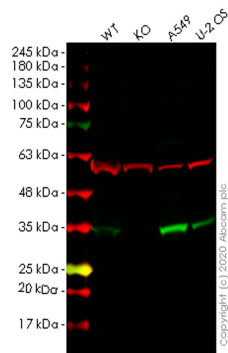
The Abpromise guarantee Our **Abpromise guarantee** covers the use of ab189255 in the following tested applications. The application notes include recommended starting dilutions; optimal dilutions/concentrations should be determined by the end user.

Application	Abreviews	Notes
WB		1/10000 - 1/50000. Detects a band of approximately 33 kDa (predicted molecular weight: 36 kDa).
IHC-P		1/250 - 1/500. Perform heat mediated antigen retrieval with Tris/EDTA buffer pH 9.0 before commencing with IHC staining protocol.
ICC/IF		1/100 - 1/250.
IP		1/60.
Flow Cyt (Intra)		1/20. ab172730 - Rabbit monoclonal IgG, is suitable for use as an isotype control with this antibody.

Target

Function Isomerization of 3-trans,5-cis-dienoyl-CoA to 2-trans,4-trans-dienoyl-CoA.
Pathway Lipid metabolism; fatty acid beta-oxidation.
Sequence similarities Belongs to the enoyl-CoA hydratase/isomerase family.
Cellular localization Mitochondrion. Peroxisome.

Images



Western blot - Anti-ECH1 antibody [EPR15449(B)] - C-terminal (ab189255)

All lanes : Anti-ECH1 antibody [EPR15449(B)] - C-terminal (ab189255) at 1/1000 dilution

Lane 1 : Wild-type HEK293T cell lysate

Lane 2 : ECH1 knockout HEK293T cell lysate

Lane 3 : A549 cell lysate

Lane 4 : U-2 OS cell lysate

Lysates/proteins at 20 µg per lane.

Secondary

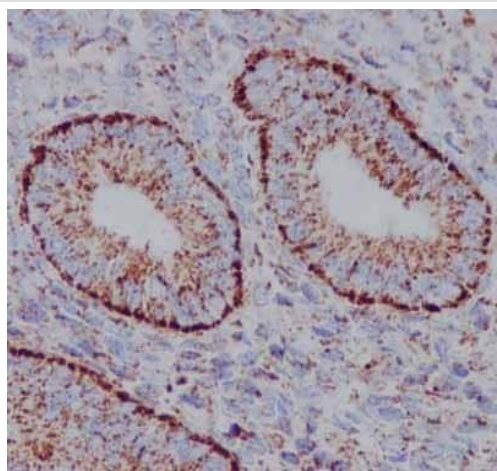
All lanes : Goat anti-Rabbit IgG H&L (IRDye® 800CW) preadsorbed ([ab216773](#)) at 1/10000 dilution

Predicted band size: 36 kDa

Observed band size: 36 kDa

Lanes 1-4: Merged signal (red and green). Green - ab189255 observed at 36 kDa. Red - loading control [ab7291](#) observed at 50 kDa.

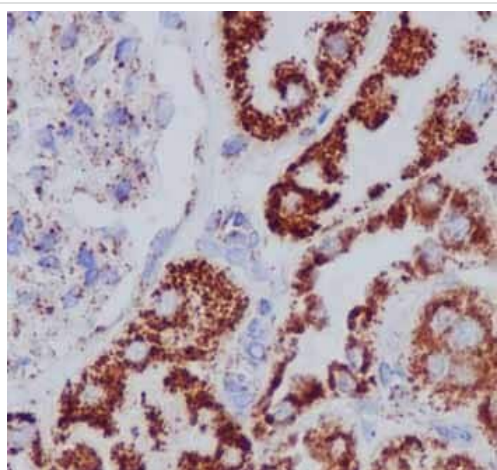
ab189255 Anti-ECH1 antibody [EPR15449(B)] was shown to specifically react with ECH1 in wild-type HEK293T cells. Loss of signal was observed when knockout cell line [ab266748](#) (knockout cell lysate [ab257933](#)) was used. Wild-type and ECH1 knockout samples were subjected to SDS-PAGE. ab189255 and Anti-alpha Tubulin antibody [DM1A] - Loading Control ([ab7291](#)) were incubated overnight at 4°C at 1 in 1000 dilution and 1 in 20000 dilution respectively. Blots were developed with Goat anti-Rabbit IgG H&L (IRDye® 800CW) preadsorbed ([ab216773](#)) and Goat anti-Mouse IgG H&L (IRDye® 680RD) preadsorbed ([ab216776](#)) secondary antibodies at 1 in 20000 dilution for 1 hour at room temperature before imaging.



Immunohistochemistry (Formalin/PFA-fixed paraffin-embedded sections) - Anti-ECH1 antibody [EPR15449(B)] - C-terminal (ab189255)

Immunohistochemical analysis of paraffin-embedded human endometrium tissue labeling ECH1 with **ab189254** at 1/500 dilution, followed by prediluted HRP Polymer for Rabbit IgG. Counter stained with Hematoxylin.

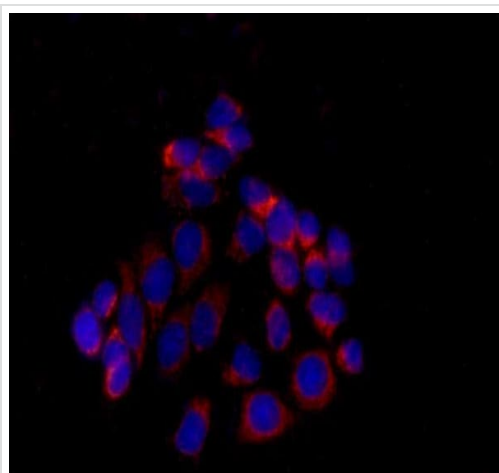
Perform heat mediated antigen retrieval with Tris/EDTA buffer pH 9.0 before commencing with IHC staining protocol.



Immunohistochemistry (Formalin/PFA-fixed paraffin-embedded sections) - Anti-ECH1 antibody [EPR15449(B)] - C-terminal (ab189255)

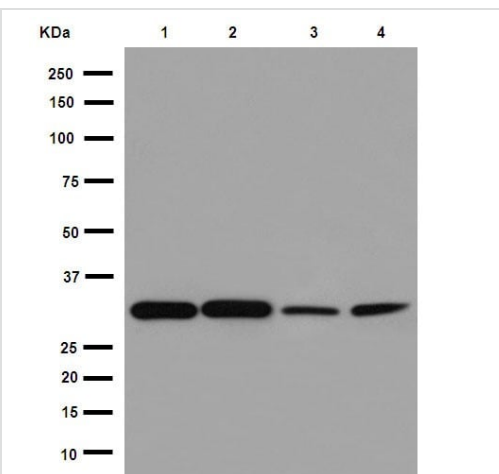
Immunohistochemical analysis of paraffin-embedded human kidney tissue labeling ECH1 with **ab189254** at 1/500 dilution, followed by prediluted HRP Polymer for Rabbit IgG. Counter stained with Hematoxylin.

Perform heat mediated antigen retrieval with Tris/EDTA buffer pH 9.0 before commencing with IHC staining protocol.



Immunocytochemistry/ Immunofluorescence - Anti-ECH1 antibody [EPR15449(B)] - C-terminal (ab189255)

Immunofluorescent analysis of 100% methanol(-20 C)-fixed MCF-7 cells labeling ECH1 with **ab189254** at 1/250 dilution, followed by Goat anti rabbit IgG (Alexa Fluor ® 555) secondary antibody at 1/200 dilution. Counter stained with DAPI.



Western blot - Anti-ECH1 antibody [EPR15449(B)] - C-terminal (ab189255)

All lanes : Anti-ECH1 antibody [EPR15449(B)] - C-terminal (ab189255) at 1/50000 dilution

Lane 1 : Human fetal liver lysate

Lane 2 : A549 cell lysate

Lane 3 : Jurkat cell lysate

Lane 4 : HeLa cell lysate

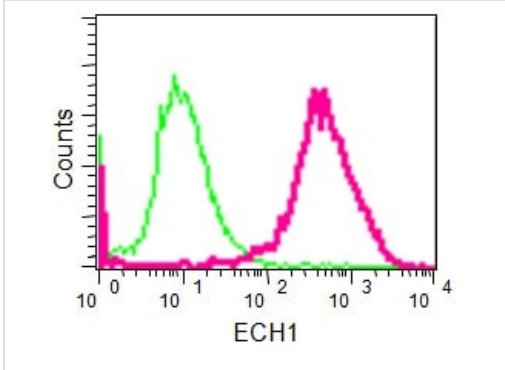
Lysates/proteins at 20 μg per lane.

Secondary

All lanes : Goat Anti-Rabbit IgG, (H+L), Peroxidase conjugate at 1/1000 dilution

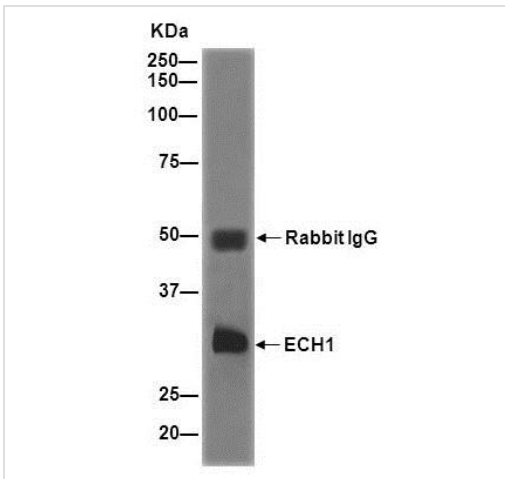
Predicted band size: 36 kDa

Observed band size: 33 kDa



Flow Cytometry (Intracellular) - Anti-ECH1 antibody
 [EPR15449(B)] - C-terminal (ab189255)

Intracellular flow cytometric analysis of 2% paraformaldehyde-fixed Jurkat cells labeling ECH1 with ab189255 at 1/20 dilution (red) compared to a Rabbit monoclonal IgG isotype control (green), followed by Goat anti rabbit IgG (FITC) secondary antibody at 1/150 dilution.



Immunoprecipitation - Anti-ECH1 antibody
 [EPR15449(B)] - C-terminal (ab189255)

Western blot analysis of ECH1 in human fetal liver lysate immunoprecipitated using **ab189254** at 1/50 dilution.

Secondary antibody: Goat Anti-Rabbit IgG, (H+L), Peroxidase conjugate at 1/1000 dilution.

Why choose a recombinant antibody?



Research with confidence
Consistent and reproducible results



Long-term and scalable supply
Recombinant technology



Success from the first experiment
Confirmed specificity



Ethical standards compliant
Animal-free production

Anti-ECH1 antibody [EPR15449(B)] - C-terminal
(ab189255)

Please note: All products are "FOR RESEARCH USE ONLY. NOT FOR USE IN DIAGNOSTIC PROCEDURES"

Our Abpromise to you: Quality guaranteed and expert technical support

- Replacement or refund for products not performing as stated on the datasheet
- Valid for 12 months from date of delivery
- Response to your inquiry within 24 hours
- We provide support in Chinese, English, French, German, Japanese and Spanish
- Extensive multi-media technical resources to help you
- We investigate all quality concerns to ensure our products perform to the highest standards

If the product does not perform as described on this datasheet, we will offer a refund or replacement. For full details of the Abpromise, please visit <https://www.abcam.com/abpromise> or contact our technical team.

Terms and conditions

- Guarantee only valid for products bought direct from Abcam or one of our authorized distributors