

Product datasheet

Anti-EDG2 /LPA-1 antibody [EPR9710] ab166903

Recombinant RabMAb

★★★★★ [1 Abreviews](#) [11 References](#) [6 Images](#)

Overview

Product name	Anti-EDG2 /LPA-1 antibody [EPR9710]
Description	Rabbit monoclonal [EPR9710] to EDG2 /LPA-1
Host species	Rabbit
Tested applications	Suitable for: Indirect ELISA, WB, IHC-P, IP Unsuitable for: Flow Cyt or ICC/IF
Species reactivity	Reacts with: Human, Recombinant fragment
Immunogen	Synthetic peptide within Human EDG2/LPA-1. The exact sequence is proprietary. Database link: Q92633 (Peptide available as ab184693)
Positive control	Jurkat, HeLa, Caco 2 and A375 cell lysates, paraffin-embedded Human colon tissue, paraffin-embedded Human kidney tissue.
General notes	This product is a recombinant monoclonal antibody, which offers several advantages including: <ul style="list-style-type: none"> - High batch-to-batch consistency and reproducibility - Improved sensitivity and specificity - Long-term security of supply - Animal-free production For more information see here . Our RabMAb [®] technology is a patented hybridoma-based technology for making rabbit monoclonal antibodies. For details on our patents, please refer to RabMAb[®] patents .

Properties

Form	Liquid
Storage instructions	Shipped at 4°C. Upon delivery aliquot and store at -20°C. Avoid freeze / thaw cycles.
Storage buffer	pH: 7.2 Preservative: 0.01% Sodium azide Constituents: 59% PBS, 40% Glycerol (glycerin, glycerine), 0.5% BSA
Purity	Protein A purified
Clonality	Monoclonal
Clone number	EPR9710

Isotype

IgG

Applications

The Abpromise guarantee

Our **Abpromise guarantee** covers the use of ab166903 in the following tested applications.

The application notes include recommended starting dilutions; optimal dilutions/concentrations should be determined by the end user.

Application	Abreviews	Notes
Indirect ELISA		Use at an assay dependent concentration.
WB	★★★★★ (1)	1/1000 - 1/5000. Predicted molecular weight: 39 kDa.
IHC-P		1/100 - 1/250. Perform heat mediated antigen retrieval with citrate buffer pH 6 before commencing with IHC staining protocol.
IP		1/10 - 1/100.

Application notes

Is unsuitable for Flow Cyt or ICC/IF.

Target

Function

Receptor for lysophosphatidic acid (LPA), a mediator of diverse cellular activities. Seems to be coupled to the G(i)/G(o), G(12)/G(13), and G(q) families of heteromeric G proteins. Stimulates phospholipase C (PLC) activity in a manner that is dependent on RALA activation.

Tissue specificity

Expressed in many adult organs, including brain, heart, colon, small intestine, placenta, prostate, ovary, pancreas, testes, spleen, skeletal muscle, and kidney. Little or no expression in liver, lung, thymus, or peripheral blood leukocytes.

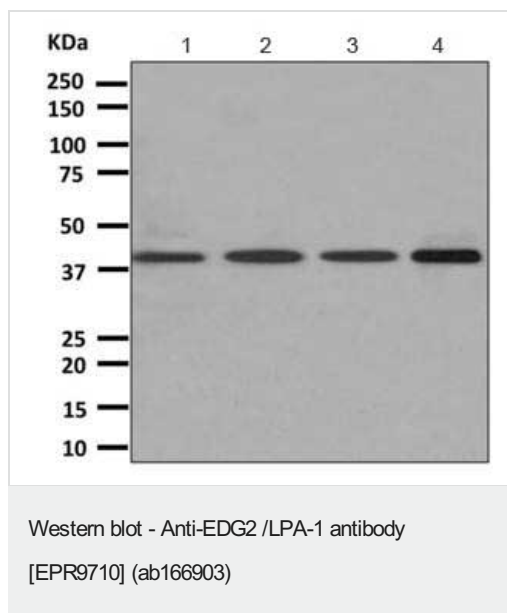
Sequence similarities

Belongs to the G-protein coupled receptor 1 family.

Cellular localization

Cell surface. Cell membrane. Prior to LPA treatment found predominantly at the cell surface but in the presence of LPA co-localizes with RALA in the endocytic vesicles.

Images



All lanes : Anti-EDG2 / LPA-1 antibody [EPR9710] (ab166903) at 1/1000 dilution

Lane 1 : Jurkat cell lysate

Lane 2 : HeLa cell lysate

Lane 3 : Caco 2 cell lysate

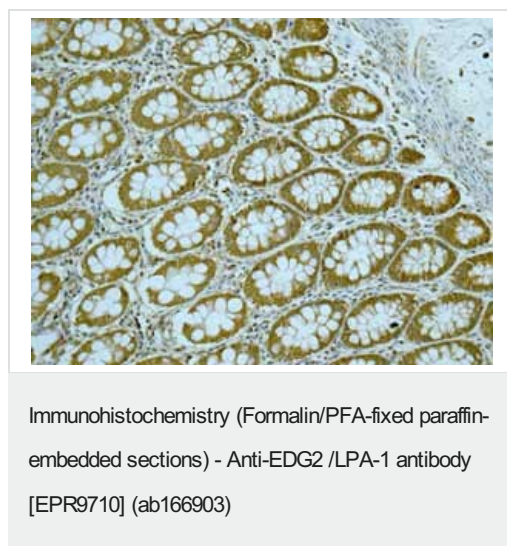
Lane 4 : A375 cell lysate

Lysates/proteins at 10 µg per lane.

Secondary

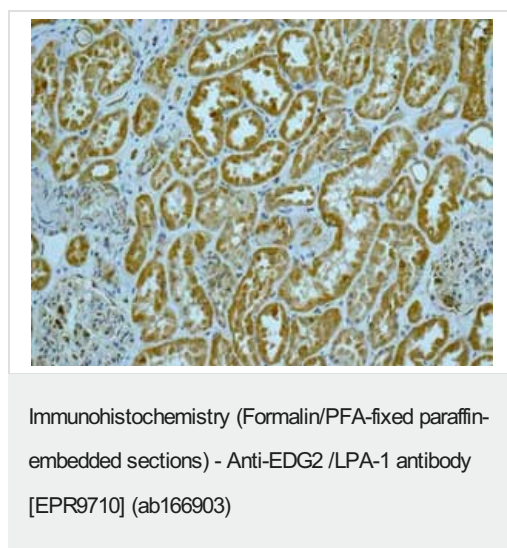
All lanes : goat anti-rabbit HRP IgG antibody at 1/2000 dilution

Predicted band size: 39 kDa



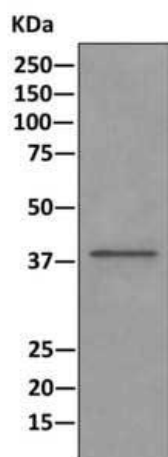
Immunohistochemical analysis of paraffin-embedded Human colon tissue labeling EDG2 / LPA-1 using ab166903 at 1/100 dilution.

Perform heat mediated antigen retrieval with citrate buffer pH 6 before commencing with IHC staining protocol.



Immunohistochemical analysis of paraffin-embedded Human kidney tissue labeling EDG2 / LPA-1 using ab166903 at 1/100 dilution.

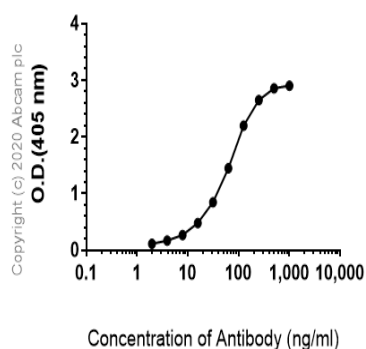
Perform heat mediated antigen retrieval with citrate buffer pH 6 before commencing with IHC staining protocol.



Immunoprecipitation - Anti-EDG2 /LPA-1 antibody
[EPR9710] (ab166903)

Western blot analysis on immunoprecipitation pellet from HeLa cell lysate using ab166903 at 1/10 dilution. HRP-conjugated anti-rabbit IgG preferentially detecting the non-reduced form of rabbit IgG.

Indirect ELISA antibody dose-response curve antigen at 250 ng/ml



Indirect ELISA - Anti-EDG2 /LPA-1 antibody
[EPR9710] (ab166903)

ELISA analysis of Human EDG2/LPA-1 recombinant protein at 250 ng/mL with ab166903. An Alkaline Phosphatase-conjugated AffiniPure Goat Anti-Rabbit IgG (H+L) at 1/2500 dilution was used as the secondary antibody.

Why choose a recombinant antibody?



**Research with
confidence**
Consistent and
reproducible results



**Long-term and
scalable supply**
Recombinant
technology



**Success from the
first experiment**
Confirmed
specificity



**Ethical standards
compliant**
Animal-free
production

Anti-EDG2 /LPA-1 antibody [EPR9710] (ab166903)

Please note: All products are "FOR RESEARCH USE ONLY. NOT FOR USE IN DIAGNOSTIC PROCEDURES"

Our Abpromise to you: Quality guaranteed and expert technical support

- Replacement or refund for products not performing as stated on the datasheet
- Valid for 12 months from date of delivery
- Response to your inquiry within 24 hours
- We provide support in Chinese, English, French, German, Japanese and Spanish
- Extensive multi-media technical resources to help you
- We investigate all quality concerns to ensure our products perform to the highest standards

If the product does not perform as described on this datasheet, we will offer a refund or replacement. For full details of the Abpromise, please visit <https://www.abcam.com/abpromise> or contact our technical team.

Terms and conditions

- Guarantee only valid for products bought direct from Abcam or one of our authorized distributors