


# Anti-EDG6/S1PR4 antibody ab126392

[1 References](#) [1 Image](#)

### Overview

---

<b>Product name</b>	Anti-EDG6/S1PR4 antibody
<b>Description</b>	Rabbit polyclonal to EDG6/S1PR4
<b>Host species</b>	Rabbit
<b>Tested applications</b>	<b>Suitable for:</b> WB
<b>Species reactivity</b>	<b>Reacts with:</b> Human <b>Predicted to work with:</b> Pig, Macaque monkey, Gorilla 
<b>Immunogen</b>	Synthetic peptide corresponding to Human EDG6/S1PR4 aa 350 to the C-terminus conjugated to keyhole limpet haemocyanin. (Peptide available as <a href="#">ab126640</a> )
<b>Positive control</b>	This antibody gave a positive signal in both HEK293 and Jurkat whole cell lysates.
<b>General notes</b>	<p>The Life Science industry has been in the grips of a reproducibility crisis for a number of years. Abcam is leading the way in addressing this with our range of recombinant monoclonal antibodies and knockout edited cell lines for gold-standard validation. Please check that this product meets your needs before purchasing.</p> <p>If you have any questions, special requirements or concerns, please send us an inquiry and/or contact our Support team ahead of purchase. Recommended alternatives for this product can be found below, along with publications, customer reviews and Q&amp;As</p>

### Properties

---

<b>Form</b>	Liquid
<b>Storage instructions</b>	Shipped at 4°C. Store at +4°C short term (1-2 weeks). Upon delivery aliquot. Store at -20°C or -80°C. Avoid freeze / thaw cycle.
<b>Storage buffer</b>	pH: 7.40 Preservative: 0.02% Sodium azide Constituent: PBS  Batches of this product that have a concentration < 1mg/ml may have BSA added as a stabilising agent. If you would like information about the formulation of a specific lot, please contact our scientific support team who will be happy to help.
<b>Purity</b>	Immunogen affinity purified

<b>Clonality</b>	Polyclonal
<b>Isotype</b>	IgG

## Applications

**The Abpromise guarantee** Our **Abpromise guarantee** covers the use of ab126392 in the following tested applications.

The application notes include recommended starting dilutions; optimal dilutions/concentrations should be determined by the end user.

Application	Abreviews	Notes
<b>WB</b>		Use a concentration of 1 µg/ml. Detects a band of approximately 48 kDa (predicted molecular weight: 42 kDa).

## Target

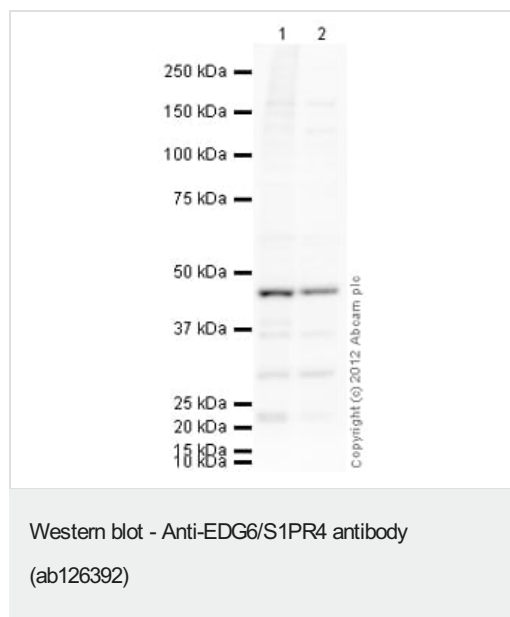
**Function** Receptor for the lysosphingolipid sphingosine 1-phosphate (S1P). S1P is a bioactive lysophospholipid that elicits diverse physiological effect on most types of cells and tissues. May be involved in cell migration processes that are specific for lymphocytes.

**Tissue specificity** Specifically expressed in fetal and adult lymphoid and hematopoietic tissue as well as in lung. Considerable level of expression in adult and fetal spleen as well as adult peripheral leukocytes and lung. Lower expression in adult thymus, lymph node, bone marrow, and appendix as well as in fetal liver, thymus, and lung.

**Sequence similarities** Belongs to the G-protein coupled receptor 1 family.

**Cellular localization** Cell membrane.

## Images



**All lanes** : Anti-EDG6/S1PR4 antibody (ab126392) at 1 µg/ml

**Lane 1** : HEK293 (Human embryonic kidney cell line) Whole Cell Lysate

**Lane 2** : Jurkat (Human T cell lymphoblast-like cell line) Whole Cell Lysate

Lysates/proteins at 10 µg per lane.

### Secondary

**All lanes** : Goat Anti-Rabbit IgG H&L (HRP) preadsorbed (**ab97080**) at 1/5000 dilution

Developed using the ECL technique.

Performed under reducing conditions.

**Predicted band size:** 42 kDa

**Observed band size:** 48 kDa

**Additional bands at:** 22 kDa, 30 kDa, 36 kDa. We are unsure as to the identity of these extra bands.

**Exposure time:** 30 seconds

EDG6/S1PR4 contains a number of potential glycosylation sites (SwissProt) which may explain its migration at a higher molecular weight than predicted.

**Please note:** All products are "FOR RESEARCH USE ONLY. NOT FOR USE IN DIAGNOSTIC PROCEDURES"

### **Our Abpromise to you: Quality guaranteed and expert technical support**

---

- Replacement or refund for products not performing as stated on the datasheet
- Valid for 12 months from date of delivery
- Response to your inquiry within 24 hours
- We provide support in Chinese, English, French, German, Japanese and Spanish
- Extensive multi-media technical resources to help you
- We investigate all quality concerns to ensure our products perform to the highest standards

If the product does not perform as described on this datasheet, we will offer a refund or replacement. For full details of the Abpromise, please visit <https://www.abcam.com/abpromise> or contact our technical team.

### **Terms and conditions**

---

- Guarantee only valid for products bought direct from Abcam or one of our authorized distributors