


Product datasheet

Anti-eEF1A1/EF-Tu+eEF1A1 + eEF1AL3 antibody [EPR9470] α b140632

Recombinant RabMAb

★★★★★ [2 Abreviews](#) [3 References](#) [7 Images](#)

Overview

| | |
|----------------------------|---|
| Product name | Anti-eEF1A1/EF-Tu+eEF1A1 + eEF1AL3 antibody [EPR9470] |
| Description | Rabbit monoclonal [EPR9470] to eEF1A1/EF-Tu+eEF1A1 + eEF1AL3 |
| Host species | Rabbit |
| Tested applications | Suitable for: Flow Cyt (Intra), IHC-P, ICC/IF, WB Unsuitable for: IP |
| Species reactivity | Reacts with: Human Predicted to work with: Mouse, Rat  |
| Immunogen | Synthetic peptide. This information is proprietary to Abcam and/or its suppliers. |
| Positive control | WB: HeLa and 293T cell lysates. GST tagged Recombinant Human EEF1A1 and EEF1AL3 protein. ICC/IF: MCF-7 cells. IHC-P: Human brain and human breast carcinoma tissues. Flow Cyt (intra): MCF-7 cells. |
| General notes | <p>This product is a recombinant monoclonal antibody, which offers several advantages including:</p> <ul style="list-style-type: none"> - High batch-to-batch consistency and reproducibility - Improved sensitivity and specificity - Long-term security of supply - Animal-free production <p>For more information see here.</p> <p>Our RabMAb[®] technology is a patented hybridoma-based technology for making rabbit monoclonal antibodies. For details on our patents, please refer to RabMAb[®] patents.</p> |

Properties

| | |
|-----------------------------|--|
| Form | Liquid |
| Storage instructions | Shipped at 4°C. Upon delivery aliquot and store at -20°C. Avoid freeze / thaw cycles. |
| Storage buffer | pH: 7.2 Preservative: 0.01% Sodium azide Constituents: 9% PBS, 40% Glycerol (glycerin, glycerine), 0.05% BSA, 50% Tissue culture supernatant |

| | |
|---------------------|--------------------|
| Purity | Protein A purified |
| Clonality | Monoclonal |
| Clone number | EPR9470 |
| Isotype | IgG |

Applications

The Abpromise guarantee Our **Abpromise guarantee** covers the use of ab140632 in the following tested applications.
The application notes include recommended starting dilutions; optimal dilutions/concentrations should be determined by the end user.

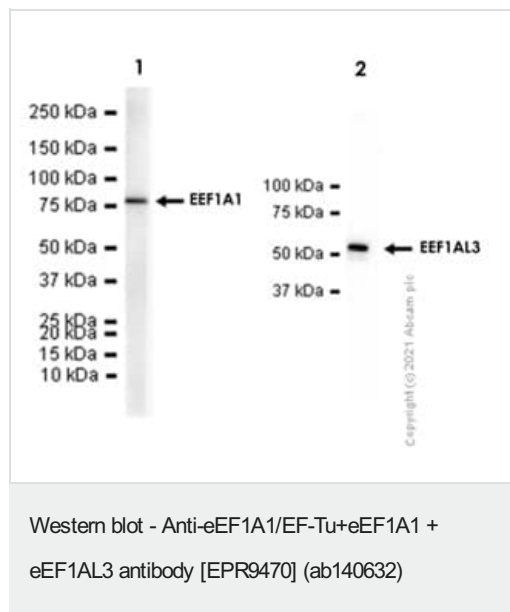
| Application | Abreviews | Notes |
|-------------------------|-----------|--|
| Flow Cyt (Intra) | | 1/100 - 1/1000. ab172730 - Rabbit monoclonal IgG, is suitable for use as an isotype control with this antibody. |
| IHC-P | | 1/50 - 1/100. Perform heat mediated antigen retrieval with citrate buffer pH 6 before commencing with IHC staining protocol. |
| ICC/IF | | 1/500. |
| WB | ★★★★★ (1) | 1/1000 - 1/10000. Predicted molecular weight: 50 kDa. |

Application notes Is unsuitable for IP.

Target

Cellular localization eEF1A1/EF-Tu: Cytoplasm.

Images



All lanes : Anti-eEF1A1/EF-Tu+eEF1A1 + eEF1A3 antibody [EPR9470] (ab140632) at 1/1000 dilution

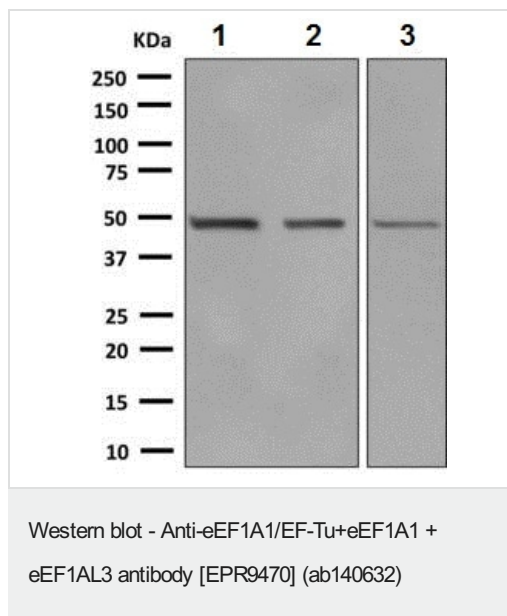
Lane 1 : GST tagged Recombinant Human eEF1A1 protein (Full length, 76 kDa)

Lane 2 : His tagged Recombinant Human eEF1A3 protein (Full length, 52 kDa)

Secondary

All lanes : Goat Anti-Rabbit IgG H&L (HRP) (**ab97051**) at 1/20000 dilution (Goat Anti-Rabbit IgG, (H+L), Peroxidase conjugated)

Predicted band size: 50 kDa



All lanes : Anti-eEF1A1/EF-Tu+eEF1A1 + eEF1AL3 antibody [EPR9470] (ab140632) at 1/1000 dilution

Lane 1 : HeLa cell lysate

Lane 2 : MCF-7 cell lysate

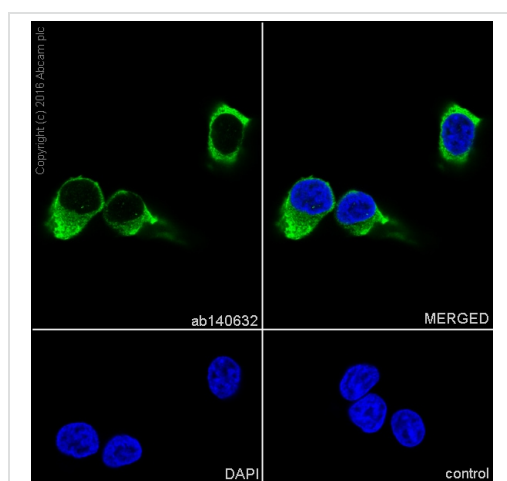
Lane 3 : 293T cell lysate

Lysates/proteins at 10 µg per lane.

Secondary

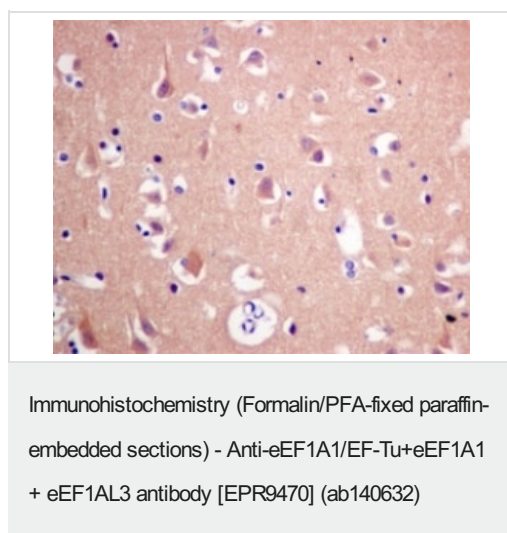
All lanes : HRP labelled Goat anti-Rabbit at 1/2000 dilution

Predicted band size: 50 kDa



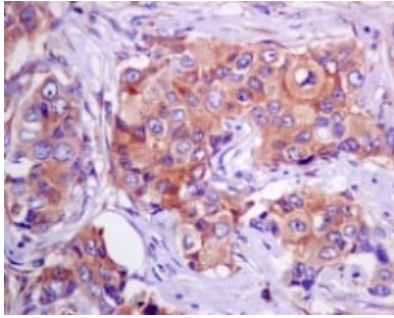
Immunocytochemistry/Immunofluorescence analysis of MCF-7 cells labelling eEF1A1/EF-Tu with purified ab140632 at a dilution of 1/500. Cells were fixed with 4% paraformaldehyde and permeabilized with 0.1% Triton X-100. **ab150077**, an Alexa Fluor® 488-conjugated goat anti-rabbit IgG (1/1000) was used as the secondary antibody. Nuclei counterstained with DAPI (blue).

Control: PBS only.



Immunohistochemical analysis of paraffin embedded Human brain tissue labelling eEF1A1/EF-Tu with ab140632 at 1/50 dilution.

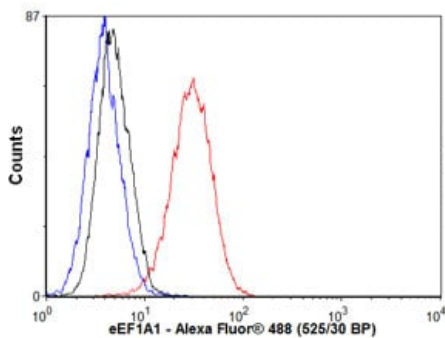
Perform heat mediated antigen retrieval with citrate buffer pH 6 before commencing with IHC staining protocol.



Immunohistochemistry (Formalin/PFA-fixed paraffin-embedded sections) - Anti-eEF1A1/EF-Tu+eEF1A1 + eEF1A13 antibody [EPR9470] (ab140632)

Immunohistochemical analysis of paraffin embedded Human breast carcinoma tissue labelling eEF1A1/EF-Tu with ab140632 at 1/50 dilution.

Perform heat mediated antigen retrieval with citrate buffer pH 6 before commencing with IHC staining protocol.



Flow Cytometry (Intracellular) - Anti-eEF1A1/EF-Tu+eEF1A1 + eEF1A13 antibody [EPR9470] (ab140632)

Overlay histogram showing MCF7 cells stained with ab140632 (red line). The cells were fixed with 4% paraformaldehyde (10 min) and then permeabilized with 0.1% PBS-Tween for 20 min. The cells were then incubated in 1x PBS / 10% normal goat serum / 0.3M glycine to block non-specific protein-protein interactions followed by the antibody (ab140632, 1/1000 dilution) for 30 min at 22°C. The secondary antibody used was Alexa Fluor® 488 goat anti-rabbit IgG (H&L) ([ab150077](#)) at 1/2000 dilution for 30 min at 22°C. Isotype control antibody (black line) was rabbit IgG (monoclonal) (0.1µg/1x10⁶ cells) used under the same conditions. Unlabelled sample (blue line) was also used as a control. Acquisition of >5,000 events were collected using a 20mW Argon ion laser (488nm) and 525/30 bandpass filter. This antibody gave a positive signal in MCF7 cells fixed with 80% methanol (5 min)/permeabilized with 0.1% PBS-Tween for 20 min used under the same conditions.

Why choose a recombinant antibody?



Research with confidence
Consistent and reproducible results



Long-term and scalable supply
Recombinant technology



Success from the first experiment
Confirmed specificity



Ethical standards compliant
Animal-free production

Anti-eEF1A1/EF-Tu antibody [EPR9470] (ab140632)

Please note: All products are "FOR RESEARCH USE ONLY. NOT FOR USE IN DIAGNOSTIC PROCEDURES"

Our Abpromise to you: Quality guaranteed and expert technical support

- Replacement or refund for products not performing as stated on the datasheet
- Valid for 12 months from date of delivery
- Response to your inquiry within 24 hours
- We provide support in Chinese, English, French, German, Japanese and Spanish
- Extensive multi-media technical resources to help you
- We investigate all quality concerns to ensure our products perform to the highest standards

If the product does not perform as described on this datasheet, we will offer a refund or replacement. For full details of the Abpromise, please visit <https://www.abcam.com/abpromise> or contact our technical team.

Terms and conditions

- Guarantee only valid for products bought direct from Abcam or one of our authorized distributors