

Product datasheet

Anti-eEF1A1/EF-Tu+eEF1A1 + eEF1AL3 antibody [EPR9471] ab157455

Recombinant RabMAb

★★★★★ [1 Abreviews](#) [8 References](#) [10 Images](#)

Overview

Product name	Anti-eEF1A1/EF-Tu+eEF1A1 + eEF1AL3 antibody [EPR9471]
Description	Rabbit monoclonal [EPR9471] to eEF1A1/EF-Tu+eEF1A1 + eEF1AL3
Host species	Rabbit
Specificity	The immunogen used for this product shares 6 continuous identical amino acids with eEF1A2. Cross-reactivity with this protein has not been confirmed experimentally.
Tested applications	Suitable for: WB, IHC-P, ICC/IF, IP, Flow Cyt (Intra)
Species reactivity	Reacts with: Mouse, Rat, Human
Immunogen	Synthetic peptide. This information is proprietary to Abcam and/or its suppliers.
Positive control	WB: HeLa, MCF7, 293T and Neuro-2a cell lysates. GST tagged Recombinant Human EEF1A1 and EEF1AL3 protein
General notes	<p>This product is a recombinant monoclonal antibody, which offers several advantages including:</p> <ul style="list-style-type: none">- High batch-to-batch consistency and reproducibility- Improved sensitivity and specificity- Long-term security of supply- Animal-free production <p>For more information see here.</p> <p>Our RabMAb[®] technology is a patented hybridoma-based technology for making rabbit monoclonal antibodies. For details on our patents, please refer to RabMAb[®] patents.</p>

Properties

Form	Liquid
Storage instructions	Shipped at 4°C. Store at +4°C short term (1-2 weeks). Upon delivery aliquot. Store at -20°C. Stable for 12 months at -20°C.
Storage buffer	Preservative: 0.01% Sodium azide Constituents: 40% Glycerol (glycerin, glycerine), 0.05% BSA, 59% PBS
Purity	Protein A purified
Clonality	Monoclonal

Clone number EPR9471
 Isotype IgG

Applications

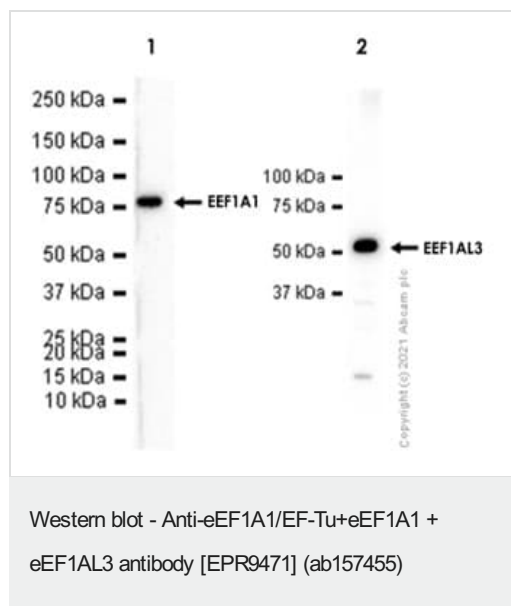
The Abpromise guarantee Our **Abpromise guarantee** covers the use of ab157455 in the following tested applications.
 The application notes include recommended starting dilutions; optimal dilutions/concentrations should be determined by the end user.

Application	Abreviews	Notes
WB	★★★★★ (1)	1/40000. Predicted molecular weight: 50 kDa. For unpurified use at 1/1000 - 1/10000.
IHC-P		1/100. Perform heat mediated antigen retrieval with Tris/EDTA buffer pH 9.0 before commencing with IHC staining protocol.
ICC/IF		1/100.
IP		1/10 - 1/100.
Flow Cyt (Intra)		Use at an assay dependent concentration.

Target

Cellular localization eEF1A1/EF-Tu: Cytoplasm.

Images



All lanes : Anti-eEF1A1/EF-Tu+eEF1A1 + eEF1A3 antibody [EPR9471] (ab157455) at 1/1000 dilution

Lane 1 : GST tagged Recombinant Human eEF1A1 protein (Full length, 76 KDa)

Lane 2 : His tagged Recombinant Human eEF1A3 protein (Full length, 52 KDa)

Secondary

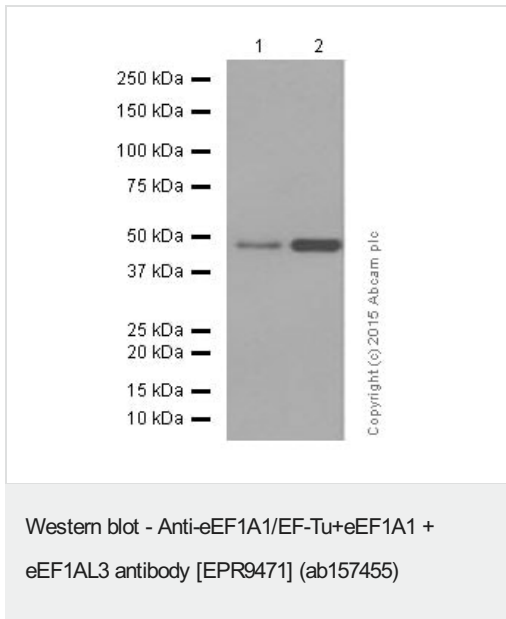
All lanes : Goat Anti-Rabbit IgG H&L (HRP) (**ab97051**) at 1/20000 dilution (Goat Anti-Rabbit IgG, (H+L), Peroxidase conjugated)

Predicted band size: 50 kDa

Exposure time:

Lane 1: 180 seconds

Lane 2: 5 seconds



All lanes : Anti-eEF1A1/EF-Tu+eEF1A1 + eEF1AL3 antibody [EPR9471] (ab157455) at 1/40000 dilution (purified)

Lane 1 : Rat kidney lysate

Lane 2 : Rat spleen lysate

Lysates/proteins at 20 µg per lane.

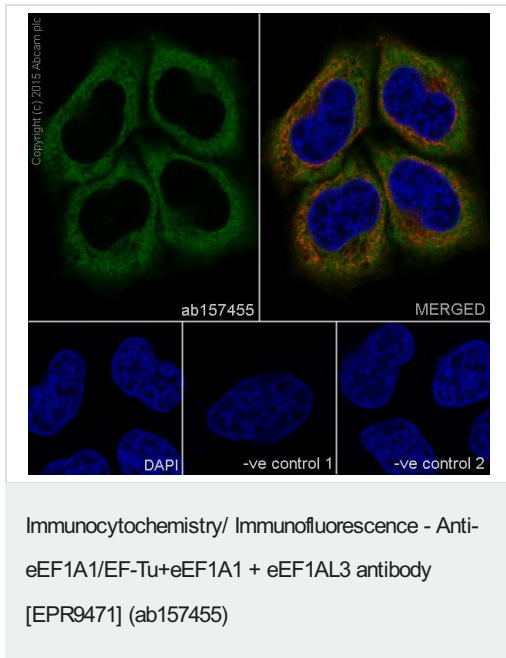
Secondary

All lanes : Goat Anti-Rabbit IgG H&L (HRP) (**ab97051**) at 1/10000 dilution (Goat Anti-Rabbit IgG, (H+L), Peroxidase conjugated)

Predicted band size: 50 kDa

Blocking buffer and concentration: 5% NFDM/TBST.

Diluting buffer and concentration: 5% NFDM /TBST.

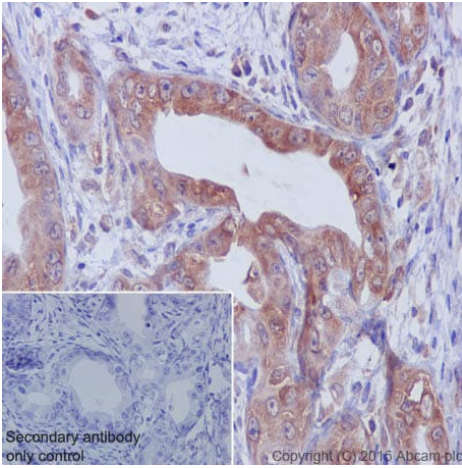


Immunocytochemistry/Immunofluorescence analysis of HeLa (human cervix adenocarcinoma) cells labelling eEF1A1/EF-Tu with purified ab157455 at 1/100. Cells were fixed with 4% paraformaldehyde and permeabilized with 0.1% Triton X-100.

ab150077, an Alexa Fluor[®] 488-conjugated goat anti-rabbit IgG (1/500) was used as the secondary antibody. DAPI (blue) was used as the nuclear counterstain. **ab7291**, a mouse anti-tubulin (1/1000) and **ab150120**, an Alexa Fluor[®] 594-conjugated goat anti-mouse IgG (1/1000) were also used.

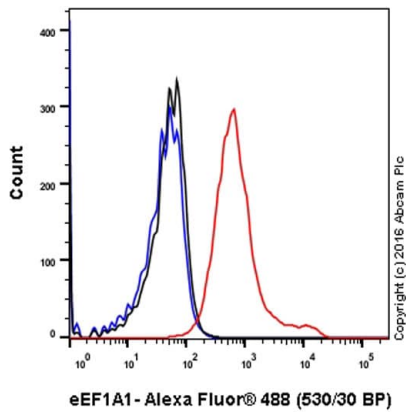
Control 1: primary antibody (1/100) and secondary antibody, **ab150120**, an Alexa Fluor[®] 594-conjugated goat anti-mouse IgG (1/500).

Control 2: **ab7291** (1/1000) and secondary antibody, **ab150077**, an Alexa Fluor[®] 488-conjugated goat anti-rabbit IgG (1/500).



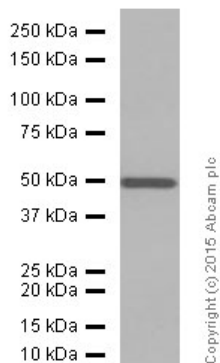
Immunohistochemistry (Formalin/PFA-fixed paraffin-embedded sections) - Anti-eEF1A1/EF-Tu+eEF1A1 + eEF1A13 antibody [EPR9471] (ab157455)

Immunohistochemistry (Formalin/PFA-fixed paraffin-embedded sections) analysis of human cervix carcinoma tissue labelling eEF1A1/EF-Tu with purified ab157455 at 1/100. Heat mediated antigen retrieval was performed using Tris/EDTA buffer pH 9. **ab97051**, a goat anti-rabbit IgG H&L (HRP) was used as the secondary antibody (1/500). Negative control using PBS instead of primary antibody. Counterstained with hematoxylin.



Flow Cytometry (Intracellular) - Anti-eEF1A1/EF-Tu+eEF1A1 + eEF1A13 antibody [EPR9471] (ab157455)

Intracellular Flow Cytometry analysis of HeLa (human cervix adenocarcinoma) cells labeling eEF1A1/EF-Tu with purified ab157455 at 1/50 dilution (10ug/ml) (red). Cells were fixed with 4% paraformaldehyde and permeabilised with 90% methanol. A Goat anti rabbit IgG (Alexa Fluor® 488) (1/2000 dilution) was used as the secondary antibody. Rabbit monoclonal IgG (Black) was used as the isotype control, cells without incubation with primary antibody and secondary antibody (Blue) was used as the unlabeled control.



Western blot - Anti-eEF1A1/EF-Tu+eEF1A1 + eEF1A3 antibody [EPR9471] (ab157455)

Anti-eEF1A1/EF-Tu+eEF1A1 + eEF1A3 antibody [EPR9471] (ab157455) at 1/40000 dilution (purified) + Mouse kidney lysate at 20 µg

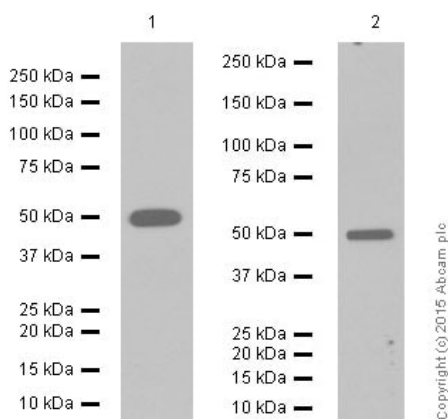
Secondary

Goat Anti-Rabbit IgG H&L (HRP) (**ab97051**) at 1/10000 dilution (Goat Anti-Rabbit IgG, (H+L), Peroxidase conjugated)

Predicted band size: 50 kDa

Blocking buffer and concentration: 5% NFDm/TBST.

Diluting buffer and concentration: 5% NFDm/TBST.



Western blot - Anti-eEF1A1/EF-Tu+eEF1A1 + eEF1A3 antibody [EPR9471] (ab157455)

All lanes : Anti-eEF1A1/EF-Tu+eEF1A1 + eEF1A3 antibody [EPR9471] (ab157455) at 1/50000 dilution (purified)

Lane 1 : MCF-7 cell lysate

Lane 2 : HeLa cell lysate

Lysates/proteins at 20 µg per lane.

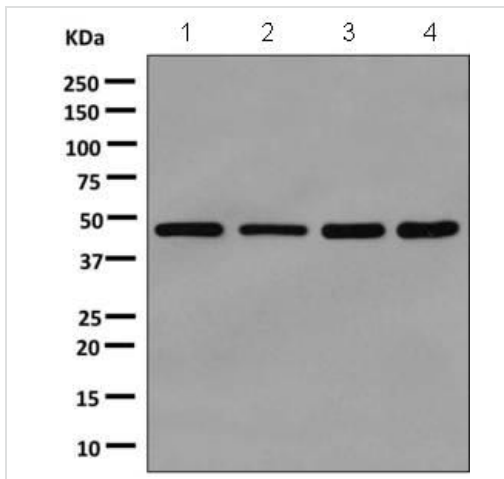
Secondary

All lanes : Goat Anti-Rabbit IgG H&L (HRP) (**ab97051**) at 20 µg (Goat Anti-Rabbit IgG, (H+L), Peroxidase conjugated)

Predicted band size: 50 kDa

Blocking buffer and concentration: 5% NFDm/TBST.

Diluting buffer and concentration: 5% NFDm /TBST.



Western blot - Anti-eEF1A1/EF-Tu+eEF1A1 + eEF1AL3 antibody [EPR9471] (ab157455)

All lanes : Anti-eEF1A1/EF-Tu+eEF1A1 + eEF1AL3 antibody [EPR9471] (ab157455) at 1/1000 dilution (unpurified)

Lane 1 : HeLa cell lysate

Lane 2 : MCF7 cell lysate

Lane 3 : 293T cell lysate

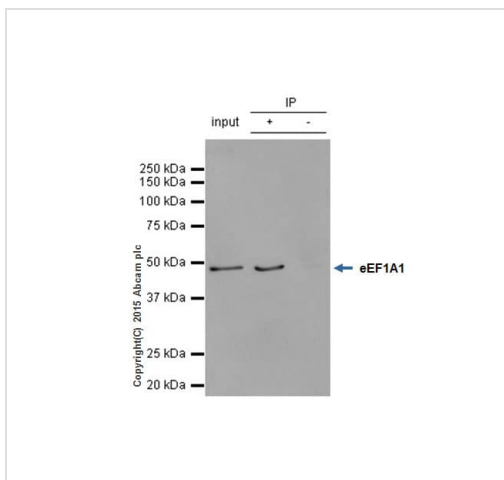
Lane 4 : Neuro-2a cell lysate

Lysates/proteins at 10 µg per lane.

Secondary

All lanes : Goat anti-rabbit HRP at 1/2000 dilution

Predicted band size: 50 kDa



Immunoprecipitation - Anti-eEF1A1/EF-Tu+eEF1A1 + eEF1AL3 antibody [EPR9471] (ab157455)

ab157455 (purified) at 1/30 immunoprecipitating eEF1A1/EF-Tu in HeLa whole cell lysate. 10 µg of cell lysate was present in the input. For western blotting, a HRP-conjugated Veriblot for IP Detection Reagent ([ab131366](#)) (1/1,500) was used for detection. A rabbit monoclonal IgG ([ab172730](#)) was used instead of [ab128913](#) as a negative control (Lane 3).

Blocking buffer and concentration: 5% NFDm/TBST.

Diluting buffer and concentration: 5% NFDm/TBST.

Why choose a recombinant antibody?



Research with confidence
Consistent and reproducible results



Long-term and scalable supply
Recombinant technology



Success from the first experiment
Confirmed specificity



Ethical standards compliant
Animal-free production

Anti-eEF1A1/EF-Tu+eEF1A1 + eEF1A3 antibody
[EPR9471] (ab157455)

Please note: All products are "FOR RESEARCH USE ONLY. NOT FOR USE IN DIAGNOSTIC PROCEDURES"

Our Abpromise to you: Quality guaranteed and expert technical support

- Replacement or refund for products not performing as stated on the datasheet
- Valid for 12 months from date of delivery
- Response to your inquiry within 24 hours
- We provide support in Chinese, English, French, German, Japanese and Spanish
- Extensive multi-media technical resources to help you
- We investigate all quality concerns to ensure our products perform to the highest standards

If the product does not perform as described on this datasheet, we will offer a refund or replacement. For full details of the Abpromise, please visit <https://www.abcam.com/abpromise> or contact our technical team.

Terms and conditions

- Guarantee only valid for products bought direct from Abcam or one of our authorized distributors