


Product datasheet

Anti-EEF1A2 antibody ab235190

[2 Images](#)

Overview

Product name	Anti-EEF1A2 antibody
Description	Chicken polyclonal to EEF1A2
Host species	Chicken
Tested applications	Suitable for: WB, IHC-P
Species reactivity	Reacts with: Human Predicted to work with: Mouse, Rat, Rabbit, Cow 
Immunogen	Synthetic peptide. This information is proprietary to Abcam and/or its suppliers.
Positive control	WB: MCF7 nuclear extract. IHC-P: Human kidney tissue.
General notes	<p>The Life Science industry has been in the grips of a reproducibility crisis for a number of years. Abcam is leading the way in addressing this with our range of recombinant monoclonal antibodies and knockout edited cell lines for gold-standard validation. Please check that this product meets your needs before purchasing.</p> <p>If you have any questions, special requirements or concerns, please send us an inquiry and/or contact our Support team ahead of purchase. Recommended alternatives for this product can be found below, along with publications, customer reviews and Q&As</p>

Properties

Form	Liquid
Storage instructions	Shipped at 4°C. Store at +4°C short term (1-2 weeks). Upon delivery aliquot. Store at -20°C long term. Avoid freeze / thaw cycle.
Storage buffer	Preservative: 0.01% Sodium azide Constituents: 0.03% Sodium phosphate, 0.87% Sodium chloride
Purity	IgY fraction
Clonality	Polyclonal
Isotype	IgY

Applications

The **Abpromise guarantee** Our **Abpromise guarantee** covers the use of ab235190 in the following tested applications.

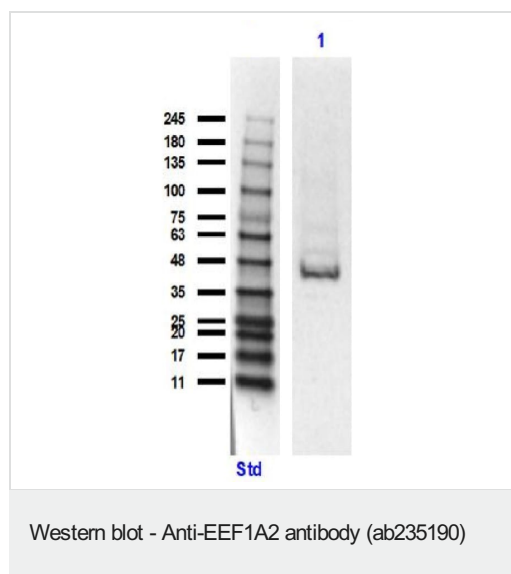
The application notes include recommended starting dilutions; optimal dilutions/concentrations should be determined by the end user.

Application	Abreviews	Notes
WB		Use a concentration of 5 µg/ml. Predicted molecular weight: 50 kDa.
IHC-P		1/100. Perform heat mediated antigen retrieval with citrate buffer pH 6 before commencing with IHC staining protocol.

Target

Function	This protein promotes the GTP-dependent binding of aminoacyl-tRNA to the A-site of ribosomes during protein biosynthesis.
Tissue specificity	Brain, heart, and skeletal muscle.
Sequence similarities	Belongs to the GTP-binding elongation factor family. EF-Tu/EF-1A subfamily.
Cellular localization	Nucleus.

Images

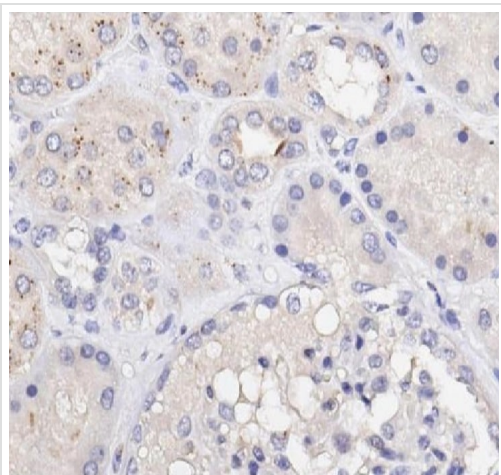


Anti-EEF1A2 antibody (ab235190) at 5 µg/ml + MCF7 (human breast adenocarcinoma cell line) nuclear extract at 35 µg

Secondary

Goat anti-chicken IgG HRP at 1/5000 dilution

Predicted band size: 50 kDa



Immunohistochemistry (Formalin/PFA-fixed paraffin-embedded sections) - Anti-EEF1A2 antibody (ab235190)

Formalin-fixed, paraffin-embedded human kidney tissue stained for EEF1A2 using ab235190 at a 1/100 dilution (30mins at RT) in immunohistochemistry.

Secondary antibody used was an anti-chicken HRP (1/500, 20mins at RT).

Counterstained with hematoxylin.

HIER using citrate buffer for 20 mins.

Image focused on renal tubular epithelium section.

Please note: All products are "FOR RESEARCH USE ONLY. NOT FOR USE IN DIAGNOSTIC PROCEDURES"

Our Abpromise to you: Quality guaranteed and expert technical support

- Replacement or refund for products not performing as stated on the datasheet
- Valid for 12 months from date of delivery
- Response to your inquiry within 24 hours
- We provide support in Chinese, English, French, German, Japanese and Spanish
- Extensive multi-media technical resources to help you
- We investigate all quality concerns to ensure our products perform to the highest standards

If the product does not perform as described on this datasheet, we will offer a refund or replacement. For full details of the Abpromise, please visit <https://www.abcam.com/abpromise> or contact our technical team.

Terms and conditions

- Guarantee only valid for products bought direct from Abcam or one of our authorized distributors