

Product datasheet

Anti-EEF1A2 antibody [EPR22651-46] ab227824

KO VALIDATED Recombinant RabMAb

5 Images

Overview

Product name	Anti-EEF1A2 antibody [EPR22651-46]
Description	Rabbit monoclonal [EPR22651-46] to EEF1A2
Host species	Rabbit
Tested applications	Suitable for: WB, IP Unsuitable for: Flow Cyt, ICC/IF or IHC-P
Species reactivity	Reacts with: Mouse, Rat, Human
Immunogen	Synthetic peptide. This information is proprietary to Abcam and/or its suppliers.
Positive control	WB: Wild-type HAP1, HEK-293T, Neuro 2a whole cell lysates; Human brain tissue lysate; Mouse and rat brain and heart tissue lysate. IP: HEK-293T whole cell lysate.
General notes	Our RabMAb [®] technology is a patented hybridoma-based technology for making rabbit monoclonal antibodies. For details on our patents, please refer to RabMAb[®] patents .

Properties

Form	Liquid
Storage instructions	Shipped at 4°C. Store at +4°C short term (1-2 weeks). Upon delivery aliquot. Store at -20°C long term. Avoid freeze / thaw cycle.
Storage buffer	pH: 7.2 Preservative: 0.01% Sodium azide Constituents: 0.05% BSA, 49% Glycerol (glycerin, glycerine), PBS
Purity	Protein A purified
Clonality	Monoclonal
Clone number	EPR22651-46
Isotype	IgG

Applications

The Abpromise guarantee Our [Abpromise guarantee](#) covers the use of ab227824 in the following tested applications.

The application notes include recommended starting dilutions; optimal dilutions/concentrations should be determined by the end user.

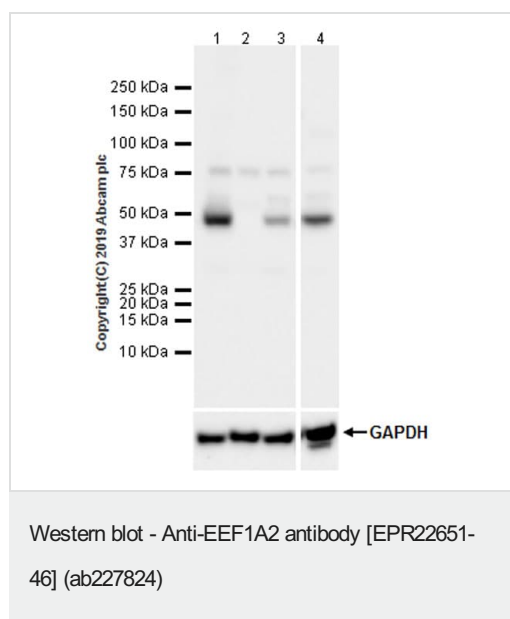
Application	Abreviews	Notes
WB		1/1000. Detects a band of approximately 50 kDa (predicted molecular weight: 50 kDa).
IP		1/30.

Application notes Is unsuitable for Flow Cyt, ICC/IF or IHC-P.

Target

Function	This protein promotes the GTP-dependent binding of aminoacyl-tRNA to the A-site of ribosomes during protein biosynthesis.
Tissue specificity	Brain, heart, and skeletal muscle.
Sequence similarities	Belongs to the GTP-binding elongation factor family. EF-Tu/EF-1A subfamily.
Cellular localization	Nucleus.

Images



All lanes : Anti-EEF1A2 antibody [EPR22651-46] (ab227824) at 1/1000 dilution

Lane 1 : Wild-type HAP1 whole cell lysate

Lane 2 : EEF1A2 knockout HAP1 whole cell lysate

Lane 3 : HEK-293T (human embryonic kidney epithelial cell), whole cell lysate

Lane 4 : Neuro-2a (mouse neuroblastoma neuroblast), whole cell lysate

Lysates/proteins at 20 µg per lane.

Secondary

All lanes : Goat Anti-Rabbit IgG H&L (HRP) ([ab97051](#)) at 1/100000 dilution

Predicted band size: 50 kDa

Observed band size: 50 kDa

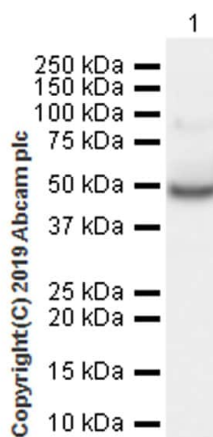
ab227824 was shown to specifically react with EEF1A2 in wild-type HAP1 cells as signal was lost in EEF1A2 knockout cells. Wild-type and EEF1A2 knockout samples were subjected to SDS-PAGE.

ab227824 and **ab181602** (Rabbit anti-GAPDH loading control) were incubated 1 hour at room temperature at 1/1000 dilution and 1/200,000 dilution respectively. Blots were developed with Goat Anti-Rabbit IgG, (H+L), Peroxidase conjugated (**ab97051**) secondary antibody at 1/100,000 dilution for 1 hour at room temperature before imaging. The blot was developed on a BIO-RAD® ChemiDoc™ MP instrument using the ECL technique.

This antibody also recognizes a weakly unidentifiable band at around 75kDa

Blocking/diluting buffer and concentration: 5% NFDM/TBST

Exposure time: 3.25 seconds



Western blot - Anti-EEF1A2 antibody [EPR22651-46] (ab227824)

Anti-EEF1A2 antibody [EPR22651-46] (ab227824) at 1/1000 dilution + Human brain tissue lysate at 20 µg

Secondary

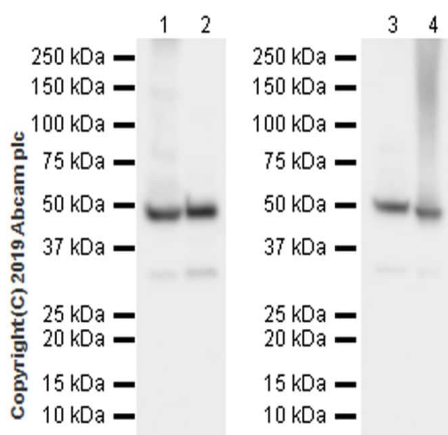
VeriBlot for IP Detection Reagent (HRP) (**ab131366**) at 1/1000 dilution

Predicted band size: 50 kDa

Observed band size: 50 kDa

Blocking/diluting buffer and concentration: 5% NFDM/TBST

Exposure time: 7.75 seconds



Western blot - Anti-EEF1A2 antibody [EPR22651-46] (ab227824)

All lanes : Anti-EEF1A2 antibody [EPR22651-46] (ab227824) at 1/1000 dilution

Lane 1 : Mouse brain tissue lysate

Lane 2 : Mouse heart tissue lysate

Lane 3 : Rat brain tissue lysate

Lane 4 : Rat heart tissue lysate

Lysates/proteins at 20 µg per lane.

Secondary

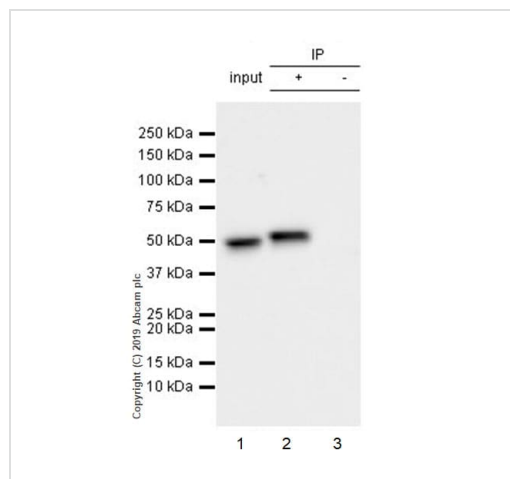
All lanes : Goat Anti-Rabbit IgG H&L (HRP) (**ab97051**) at 1/100000 dilution

Predicted band size: 50 kDa

Observed band size: 50 kDa

Blocking/diluting buffer and concentration: 5% NFDM/TBST

Exposure Time: 3.25 seconds



Immunoprecipitation - Anti-EEF1A2 antibody
[EPR22651-46] (ab227824)

EEF1A2 was immunoprecipitated from 0.35 mg HEK-293T (human embryonic kidney epithelial cell) whole cell lysate with ab227824 at 1/30 dilution (2µg in 0.35mg lysates). Western blot was performed on the immunoprecipitate using Ab227824 1/1000 dilution (0.54 µg/ml). VeriBlot for IP Detection Reagent (HRP) ([ab131366](#)) was used as the secondary antibody at 1/5000 dilution.

Lane 1: HEK-293T (human embryonic kidney epithelial cell) whole cell lysate 10µg

Lane 2: ab227824 IP in HEK-293T whole cell lysate

Lane 3: Rabbit monoclonal IgG ([ab172730](#)) instead of ab227824 in HEK-293T whole cell lysate.

Blocking and dilution buffer and concentration: 5% NFDM/TBST.

Exposure time: 15 seconds

Why choose a recombinant antibody?

Research with confidence
Consistent and reproducible results

Long-term and scalable supply
Recombinant technology

Success from the first experiment
Confirmed specificity

Ethical standards compliant
Animal-free production

Anti-EEF1A2 antibody [EPR22651-46] (ab227824)

Please note: All products are "FOR RESEARCH USE ONLY. NOT FOR USE IN DIAGNOSTIC PROCEDURES"

Our Abpromise to you: Quality guaranteed and expert technical support

- Replacement or refund for products not performing as stated on the datasheet
- Valid for 12 months from date of delivery
- Response to your inquiry within 24 hours

- We provide support in Chinese, English, French, German, Japanese and Spanish
- Extensive multi-media technical resources to help you
- We investigate all quality concerns to ensure our products perform to the highest standards

If the product does not perform as described on this datasheet, we will offer a refund or replacement. For full details of the Abpromise, please visit <https://www.abcam.com/abpromise> or contact our technical team.

Terms and conditions

- Guarantee only valid for products bought direct from Abcam or one of our authorized distributors