


Product datasheet

Anti-eEF1B2 antibody ab228642

5 Images

Overview

Product name	Anti-eEF1B2 antibody
Description	Rabbit polyclonal to eEF1B2
Host species	Rabbit
Tested applications	Suitable for: WB, IHC-P, ICC/IF
Species reactivity	Reacts with: Mouse, Human Predicted to work with: Rat, Rabbit, Chicken, Cow, Pig, Rhesus monkey 
Immunogen	Recombinant fragment within Human eEF1B2 (internal sequence). The exact sequence is proprietary. Database link: P24534
Positive control	WB: Mouse brain tissue whole cell lysate; A431, HeLa S3 and NCI-H1299 whole cell lysates. IHC-P: Mouse duodenum tissue; U87 xenograft tissue. ICC/IF: HeLa cells.
General notes	<p>The Life Science industry has been in the grips of a reproducibility crisis for a number of years. Abcam is leading the way in addressing this with our range of recombinant monoclonal antibodies and knockout edited cell lines for gold-standard validation. Please check that this product meets your needs before purchasing.</p> <p>If you have any questions, special requirements or concerns, please send us an inquiry and/or contact our Support team ahead of purchase. Recommended alternatives for this product can be found below, along with publications, customer reviews and Q&As</p>

Properties

Form	Liquid
Storage instructions	Shipped at 4°C. Store at +4°C short term (1-2 weeks). Upon delivery aliquot. Store at -20°C long term. Avoid freeze / thaw cycle.
Storage buffer	pH: 7.00 Preservative: 0.01% Thimerosal (merthiolate) Constituents: 1.21% Tris, 0.75% Glycine, 10% Glycerol (glycerin, glycerine)
Purity	Immunogen affinity purified
Clonality	Polyclonal
Isotype	IgG

Applications

The Abpromise guarantee

Our **Abpromise guarantee** covers the use of ab228642 in the following tested applications.

The application notes include recommended starting dilutions; optimal dilutions/concentrations should be determined by the end user.

Application	Abreviews	Notes
WB		1/1000 - 1/10000. Predicted molecular weight: 24 kDa.
IHC-P		1/100 - 1/1000.
ICC/IF		1/100 - 1/1000.

Target

Function

EF-1-beta and EF-1-delta stimulate the exchange of GDP bound to EF-1-alpha to GTP.

Sequence similarities

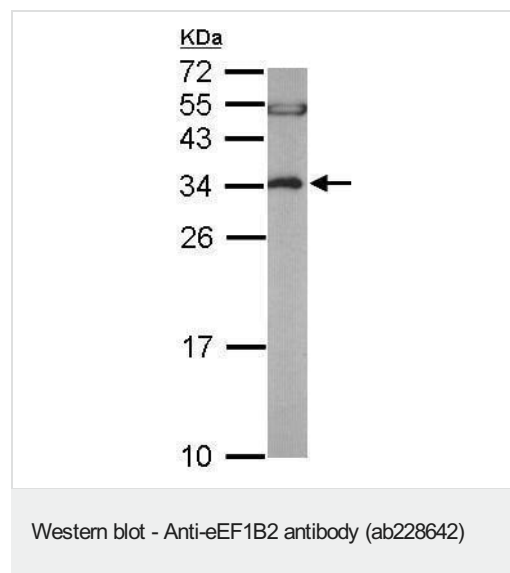
Belongs to the EF-1-beta/EF-1-delta family.

Contains 1 GST C-terminal domain.

Post-translational modifications

Phosphorylation affects the GDP/GTP exchange rate.

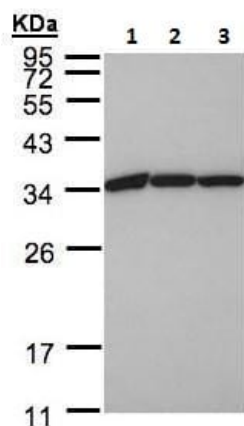
Images



Anti-eEF1B2 antibody (ab228642) at 1/5000 dilution + Mouse brain lysate at 50 µg

Predicted band size: 24 kDa

12% SDS-PAGE gel.



Western blot - Anti-eEF1B2 antibody (ab228642)

All lanes : Anti-eEF1B2 antibody (ab228642) at 1/1000 dilution

Lane 1 : A431 (human epidermoid carcinoma cell line) whole cell lysate

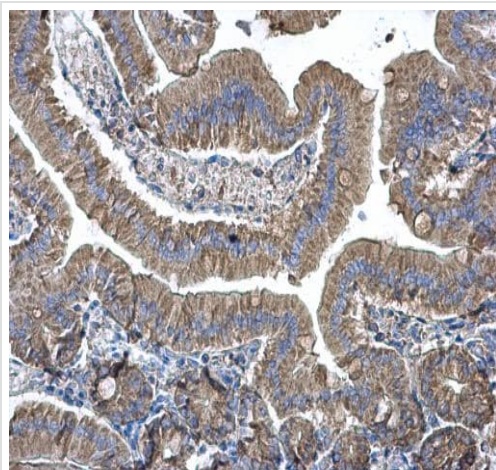
Lane 2 : NCI-H1299 (human lung carcinoma cell line) whole cell lysate

Lane 3 : HeLa S3 (human epithelial cell line from cervix adenocarcinoma) whole cell lysate

Lysates/proteins at 30 µg per lane.

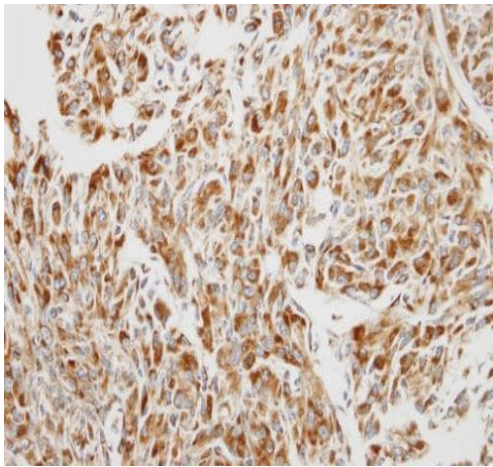
Predicted band size: 24 kDa

12% SDS-PAGE gel.



Immunohistochemistry (Formalin/PFA-fixed paraffin-embedded sections) - Anti-eEF1B2 antibody (ab228642)

Paraffin-embedded mouse duodenum tissue stained for eEF1B2 using ab228642 at 1/500 dilution in immunohistochemical analysis.



Paraffin-embedded U87 xenograft tissue stained for eEF1B2 using ab228642 at 1/250 dilution in immunohistochemical analysis.

Immunohistochemistry (Formalin/PFA-fixed paraffin-embedded sections) - Anti-eEF1B2 antibody (ab228642)



Paraformaldehyde-fixed HeLa (human epithelial cell line from cervix adenocarcinoma) cells stained for eEF1B2 (green) using ab228642 at 1/200 dilution in ICC/IF.

Nuclear counterstain: DNA probe (blue).

Immunocytochemistry/ Immunofluorescence - Anti-eEF1B2 antibody (ab228642)

Please note: All products are "FOR RESEARCH USE ONLY. NOT FOR USE IN DIAGNOSTIC PROCEDURES"

Our Abpromise to you: Quality guaranteed and expert technical support

- Replacement or refund for products not performing as stated on the datasheet
- Valid for 12 months from date of delivery
- Response to your inquiry within 24 hours
- We provide support in Chinese, English, French, German, Japanese and Spanish
- Extensive multi-media technical resources to help you

- We investigate all quality concerns to ensure our products perform to the highest standards

If the product does not perform as described on this datasheet, we will offer a refund or replacement. For full details of the Abpromise, please visit <https://www.abcam.com/abpromise> or contact our technical team.

Terms and conditions

- Guarantee only valid for products bought direct from Abcam or one of our authorized distributors