


Product datasheet

Anti-EEF1D antibody ab153728

3 Images

Overview

Product name	Anti-EEF1D antibody
Description	Rabbit polyclonal to EEF1D
Host species	Rabbit
Tested applications	Suitable for: WB, ICC/IF
Species reactivity	Reacts with: Mouse, Human Predicted to work with: Rat, Cow 
Immunogen	A recombinant fragment corresponding to a region within amino acids 1 and 281 of Human EEF1D
Positive control	H1299 cell lysate; Mouse brain tissue lysate; A431 cells
General notes	<p>The Life Science industry has been in the grips of a reproducibility crisis for a number of years. Abcam is leading the way in addressing this with our range of recombinant monoclonal antibodies and knockout edited cell lines for gold-standard validation. Please check that this product meets your needs before purchasing.</p> <p>If you have any questions, special requirements or concerns, please send us an inquiry and/or contact our Support team ahead of purchase. Recommended alternatives for this product can be found below, along with publications, customer reviews and Q&As</p>

Properties

Form	Liquid
Storage instructions	Shipped at 4°C. Upon delivery aliquot. Store at -20°C or -80°C. Avoid freeze / thaw cycle.
Storage buffer	pH: 7.00 Preservative: 0.01% Thimerosal (merthiolate) Constituents: 1.21% Tris, 0.75% Glycine, 10% Glycerol (glycerin, glycerine)
Purity	Immunogen affinity purified
Clonality	Polyclonal
Isotype	IgG

Applications

The Abpromise guarantee

Our **Abpromise guarantee** covers the use of ab153728 in the following tested applications.

The application notes include recommended starting dilutions; optimal dilutions/concentrations should be determined by the end user.

Application	Abreviews	Notes
WB		1/500 - 1/3000. Predicted molecular weight: 31 kDa.
ICC/IF		1/100 - 1/1000.

Target

Function

Isoform 1: EF-1-beta and EF-1-delta stimulate the exchange of GDP bound to EF-1-alpha to GTP, regenerating EF-1-alpha for another round of transfer of aminoacyl-tRNAs to the ribosome. Isoform 2: Regulates induction of heat-shock-responsive genes through association with heat shock transcription factors and direct DNA-binding at heat shock promoter elements (HSE).

Tissue specificity

Isoform 2 is specifically expressed in brain, cerebellum and testis.

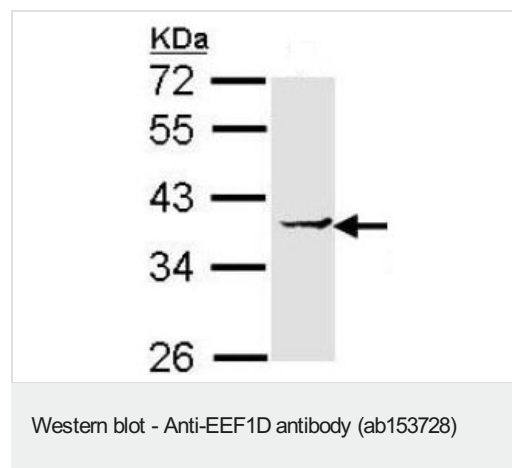
Sequence similarities

Belongs to the EF-1-beta/EF-1-delta family.

Cellular localization

Nucleus.

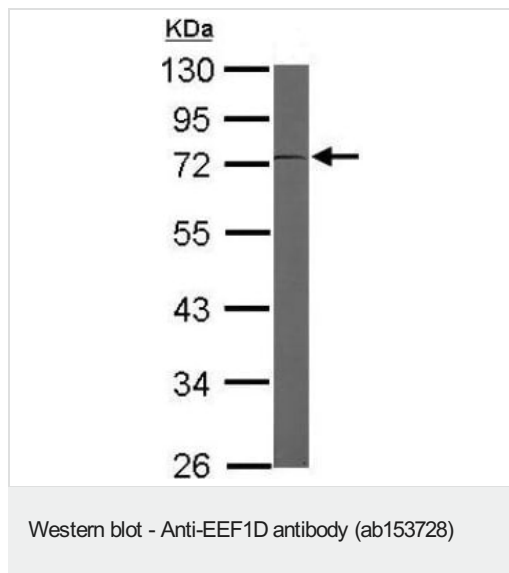
Images



Anti-EEF1D antibody (ab153728) at 1/1000 dilution + H1299 cell lysate at 30 µg

Predicted band size: 31 kDa

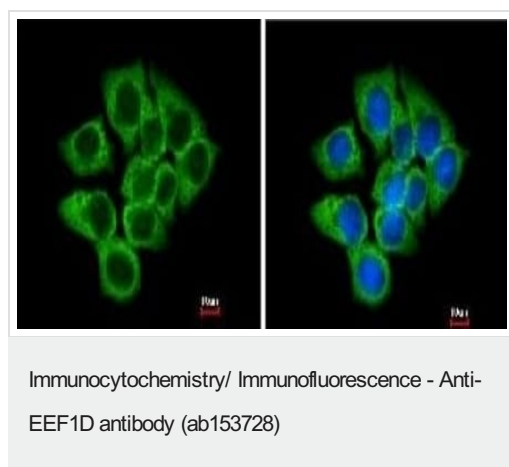
12% SDS PAGE



Anti-EEF1D antibody (ab153728) at 1/3000 dilution + Mouse brain tissue lysate at 50 µg

Predicted band size: 31 kDa

10% SDS PAGE



Immunofluorescence analysis of methanol-fixed A431 cells, labeling EEF1D using ab153728 at 1/200 dilution. Right panel costained with Hoechst 33342.

Please note: All products are "FOR RESEARCH USE ONLY. NOT FOR USE IN DIAGNOSTIC PROCEDURES"

Our Abpromise to you: Quality guaranteed and expert technical support

- Replacement or refund for products not performing as stated on the datasheet
- Valid for 12 months from date of delivery
- Response to your inquiry within 24 hours
- We provide support in Chinese, English, French, German, Japanese and Spanish
- Extensive multi-media technical resources to help you
- We investigate all quality concerns to ensure our products perform to the highest standards

If the product does not perform as described on this datasheet, we will offer a refund or replacement. For full details of the Abpromise, please visit <https://www.abcam.com/abpromise> or contact our technical team.

Terms and conditions

- Guarantee only valid for products bought direct from Abcam or one of our authorized distributors