

Product datasheet

Anti-EEF2K antibody ab96685

[1 References](#) [5 Images](#)

Overview

Product name	Anti-EEF2K antibody
Description	Rabbit polyclonal to EEF2K
Host species	Rabbit
Tested applications	Suitable for: WB, ICC/IF, IHC-P
Species reactivity	Reacts with: Mouse, Rat, Human
Immunogen	Recombinant fragment corresponding to Human EEF2K aa 1-238. Database link: O00418
Positive control	ICC/IF: A431 cells. IHC-P: BT483 xenograft. WB: A431 , H1299 , HeLa , HepG2 cells. Mouse liver lysate. PC-12 cells.
General notes	<p>The Life Science industry has been in the grips of a reproducibility crisis for a number of years. Abcam is leading the way in addressing this with our range of recombinant monoclonal antibodies and knockout edited cell lines for gold-standard validation. Please check that this product meets your needs before purchasing.</p> <p>If you have any questions, special requirements or concerns, please send us an inquiry and/or contact our Support team ahead of purchase. Recommended alternatives for this product can be found below, along with publications, customer reviews and Q&As</p>

Properties

Form	Liquid
Storage instructions	Shipped at 4°C. Store at +4°C short term (1-2 weeks). Upon delivery aliquot. Store at -20°C or -80°C. Avoid freeze / thaw cycle.
Storage buffer	pH: 7.00 Preservative: 0.01% Thimerosal (merthiolate) Constituents: 1.21% Tris, 0.75% Glycine, 10% Glycerol (glycerin, glycerine)
Purity	Immunogen affinity purified
Clonality	Polyclonal
Isotype	IgG

Applications

The Abpromise guarantee

Our **Abpromise guarantee** covers the use of ab96685 in the following tested applications.

The application notes include recommended starting dilutions; optimal dilutions/concentrations should be determined by the end user.

Application	Abreviews	Notes
WB		1/500 - 1/10000. Predicted molecular weight: 82 kDa.
ICC/IF		1/100 - 1/1000.
IHC-P		1/100 - 1/1000.

Target

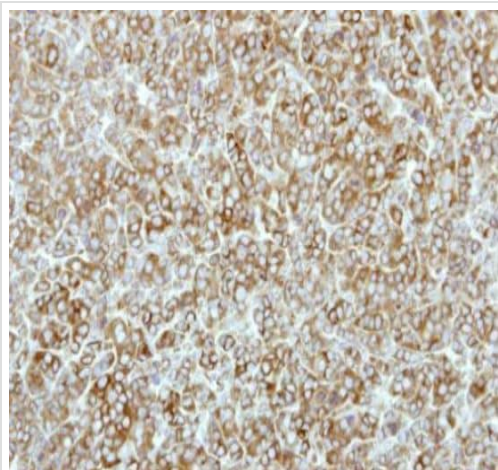
Function

Phosphorylates eukaryotic elongation factor-2. Binds calmodulin.

Sequence similarities

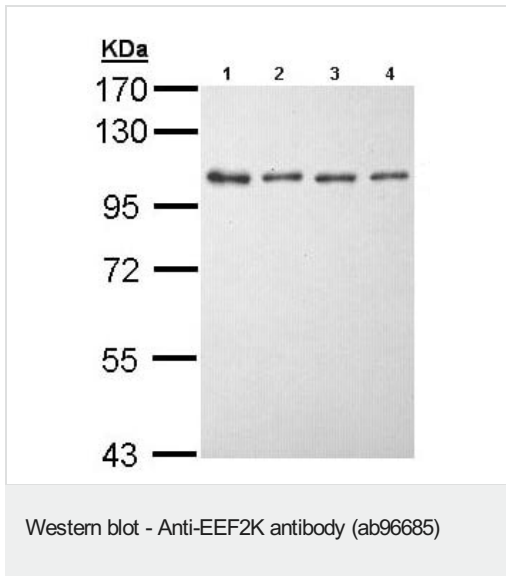
Belongs to the protein kinase superfamily. Alpha-type protein kinase family.
Contains 1 alpha-type protein kinase domain.

Images



Paraffin embedded Mouse BT483 xenograft tissue stained for eEF-2K using ab96685 at 1/500 dilution in immunohistochemical analysis.

Immunohistochemistry (Formalin/PFA-fixed paraffin-embedded sections) - Anti-EEF2K antibody (ab96685)



All lanes : Anti-EEF2K antibody (ab96685) at 1/5000 dilution

Lane 1 : A431 whole cell lysate

Lane 2 : H1299 whole cell lysate

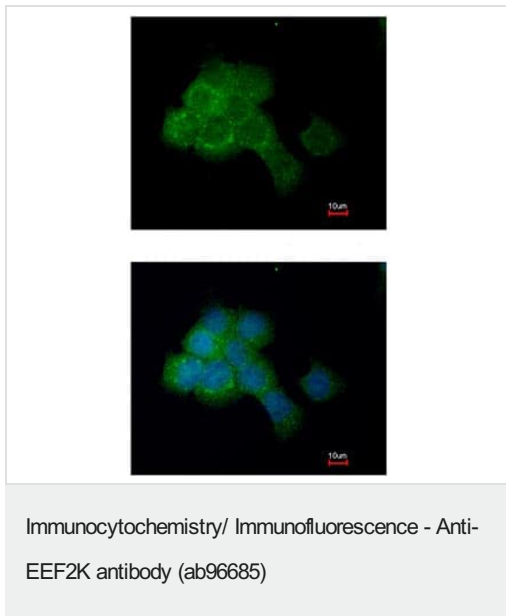
Lane 3 : HeLa whole cell lysate

Lane 4 : HepG2 whole cell lysate

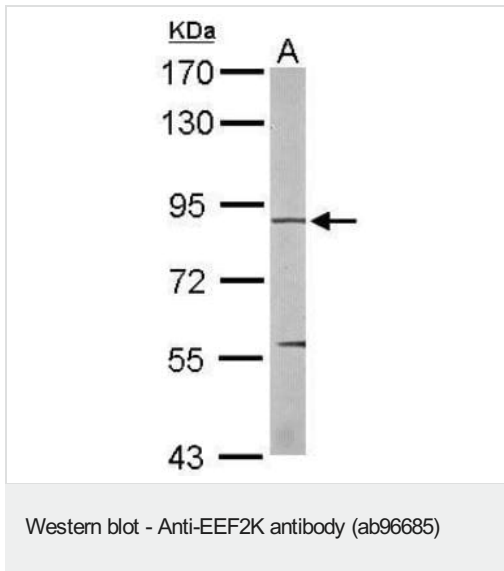
Lysates/proteins at 30 µg per lane.

Predicted band size: 82 kDa

7.5% SDS-PAGE



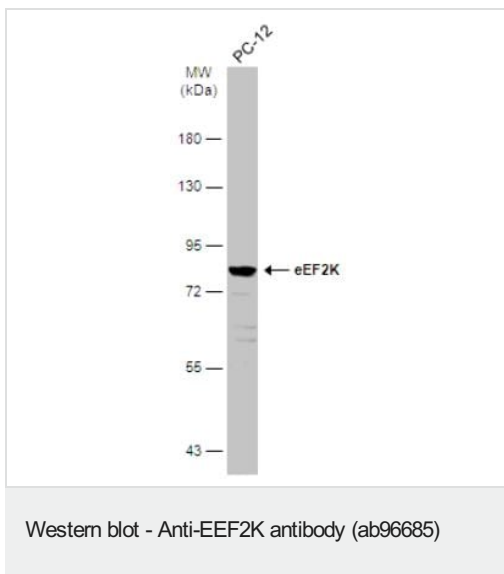
ab96685, at 1/200 dilution staining EEF2K in paraformaldehyde-fixed A431 cells by Immunofluorescence. Lower image is merged with DNA probe.



Anti-EEF2K antibody (ab96685) at 1/1000 dilution + Mouse liver whole cell lysate at 50 µg

Predicted band size: 82 kDa

7.5% SDS PAGE



Anti-EEF2K antibody (ab96685) at 1/500 dilution + PC-12 (Rat adrenal gland pheochromocytoma cell line) whole cell extract at 30 µg

Predicted band size: 82 kDa

7.5% SDS-PAGE

Please note: All products are "FOR RESEARCH USE ONLY. NOT FOR USE IN DIAGNOSTIC PROCEDURES"

Our Promise to you: Quality guaranteed and expert technical support

- Replacement or refund for products not performing as stated on the datasheet
- Valid for 12 months from date of delivery
- Response to your inquiry within 24 hours
- We provide support in Chinese, English, French, German, Japanese and Spanish
- Extensive multi-media technical resources to help you
- We investigate all quality concerns to ensure our products perform to the highest standards

If the product does not perform as described on this datasheet, we will offer a refund or replacement. For full details of the Abpromise, please visit <https://www.abcam.com/abpromise> or contact our technical team.

Terms and conditions

- Guarantee only valid for products bought direct from Abcam or one of our authorized distributors