

Product datasheet

Anti-EFCAB7 antibody ab229979

4 Images

Overview

Product name	Anti-EFCAB7 antibody
Description	Rabbit polyclonal to EFCAB7
Host species	Rabbit
Tested applications	Suitable for: ICC/IF, IHC-P, WB
Species reactivity	Reacts with: Mouse, Human
Immunogen	Recombinant fragment corresponding to Human EFCAB7 aa 1-200. Database link: A8K855 Run BLAST with Run BLAST with
Positive control	WB: HEK-293 whole cell lysate; Mouse skeletal muscle lysate. IHC-P: Human liver cancer and kidney tissues. ICC/IF: HepG2 cells.
General notes	<p>The Life Science industry has been in the grips of a reproducibility crisis for a number of years. Abcam is leading the way in addressing this with our range of recombinant monoclonal antibodies and knockout edited cell lines for gold-standard validation. Please check that this product meets your needs before purchasing.</p> <p>If you have any questions, special requirements or concerns, please send us an inquiry and/or contact our Support team ahead of purchase. Recommended alternatives for this product can be found below, along with publications, customer reviews and Q&As</p>

Properties

Form	Liquid
Storage instructions	Shipped at 4°C. Store at +4°C short term (1-2 weeks). Upon delivery aliquot. Store at -20°C long term. Avoid freeze / thaw cycle.
Storage buffer	pH: 7.40 Preservative: 0.03% Proclin 300 Constituents: 50% Glycerol (glycerin, glycerine), PBS
Purity	Protein G purified
Purification notes	Purity >95%.
Clonality	Polyclonal
Isotype	IgG

Applications

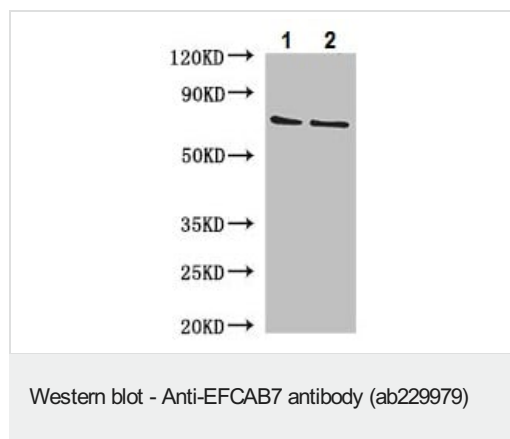
The Abpromise guarantee Our **Abpromise guarantee** covers the use of ab229979 in the following tested applications. The application notes include recommended starting dilutions; optimal dilutions/concentrations should be determined by the end user.

Application	Abreviews	Notes
ICC/IF		1/50 - 1/200.
IHC-P		1/20 - 1/200.
WB		1/2000 - 1/10000. Detects a band of approximately 72 kDa (predicted molecular weight: 72 kDa).

Target

Sequence similarities Contains 3 EF-hand domains.

Images



All lanes : Anti-EFCAB7 antibody (ab229979) at 1/2000 dilution

Lane 1 : HEK-293 (human epithelial cell line from embryonic kidney) whole cell lysate

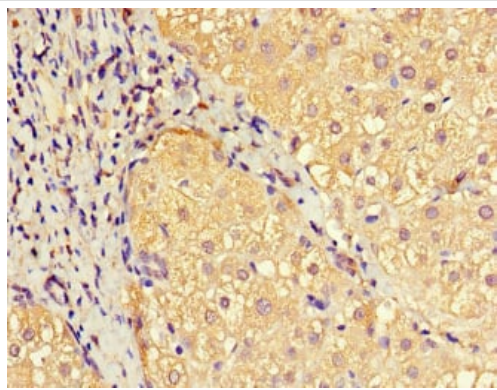
Lane 2 : Mouse skeletal muscle tissue lysate

Secondary

All lanes : Goat polyclonal to rabbit IgG at 1/50000 dilution

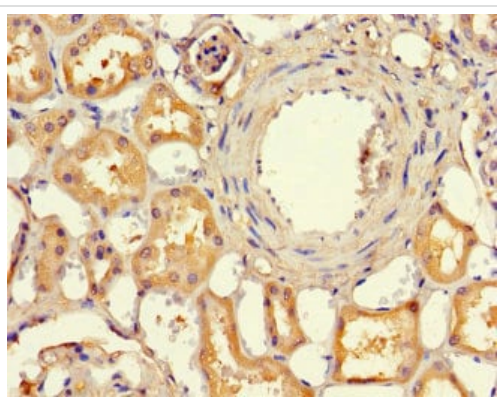
Predicted band size: 72 kDa

Observed band size: 72 kDa



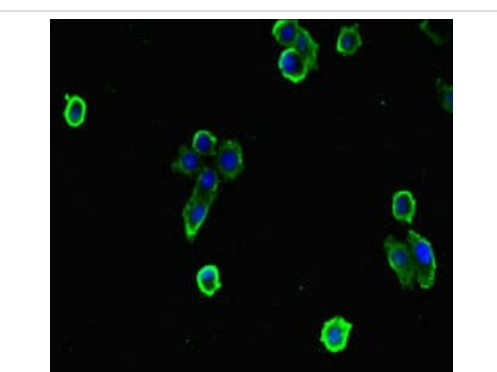
Immunohistochemistry (Formalin/PFA-fixed paraffin-embedded sections) - Anti-EFCAB7 antibody (ab229979)

Paraffin-embedded human liver cancer tissue stained for EFCAB7 using ab229979 at 1/100 dilution in immunohistochemical analysis.



Immunohistochemistry (Formalin/PFA-fixed paraffin-embedded sections) - Anti-EFCAB7 antibody (ab229979)

Paraffin-embedded human kidney tissue stained for EFCAB7 using ab229979 at 1/100 dilution in immunohistochemical analysis.



Immunocytochemistry/ Immunofluorescence - Anti-EFCAB7 antibody (ab229979)

HepG2 (human liver hepatocellular carcinoma cell line) cells stained for EFCAB7 (green) using ab229979 at 1/100 dilution in ICC/IF, followed by Alexa Fluor 488[®] conjugated Goat Anti-Rabbit IgG (H+L).

Please note: All products are "FOR RESEARCH USE ONLY. NOT FOR USE IN DIAGNOSTIC PROCEDURES"

Our Abpromise to you: Quality guaranteed and expert technical support

- Replacement or refund for products not performing as stated on the datasheet
- Valid for 12 months from date of delivery
- Response to your inquiry within 24 hours

- We provide support in Chinese, English, French, German, Japanese and Spanish
- Extensive multi-media technical resources to help you
- We investigate all quality concerns to ensure our products perform to the highest standards

If the product does not perform as described on this datasheet, we will offer a refund or replacement. For full details of the Abpromise, please visit <https://www.abcam.com/abpromise> or contact our technical team.

Terms and conditions

- Guarantee only valid for products bought direct from Abcam or one of our authorized distributors