

## Product datasheet

### Anti-EGF antibody [EPR19899] ab206423

Recombinant **RabMAb**

[3 References](#) [4 Images](#)

#### Overview

<b>Product name</b>	Anti-EGF antibody [EPR19899]
<b>Description</b>	Rabbit monoclonal [EPR19899] to EGF
<b>Host species</b>	Rabbit
<b>Tested applications</b>	<b>Suitable for:</b> WB
<b>Species reactivity</b>	<b>Reacts with:</b> Mouse, Human
<b>Immunogen</b>	Recombinant full length protein. This information is proprietary to Abcam and/or its suppliers.
<b>Positive control</b>	WB: Human EGF recombinant protein (aa971-1023); Mouse EGF recombinant protein (aa977-1029); Mouse salivary gland lysate.
<b>General notes</b>	<p>This product is a recombinant monoclonal antibody, which offers several advantages including:</p> <ul style="list-style-type: none"> <li>- High batch-to-batch consistency and reproducibility</li> <li>- Improved sensitivity and specificity</li> <li>- Long-term security of supply</li> <li>- Animal-free production</li> </ul> <p>For more information <a href="#">see here</a>.</p> <p>Our RabMAb<sup>®</sup> technology is a patented hybridoma-based technology for making rabbit monoclonal antibodies. For details on our patents, please refer to <a href="#">RabMAb<sup>®</sup> patents</a>.</p>

#### Properties

<b>Form</b>	Liquid
<b>Storage instructions</b>	Shipped at 4°C. Store at +4°C short term (1-2 weeks). Upon delivery aliquot. Store at -20°C long term. Avoid freeze / thaw cycle.
<b>Storage buffer</b>	<p>pH: 7.2</p> <p>Preservative: 0.01% Sodium azide</p> <p>Constituents: 59% PBS, 40% Glycerol, 0.05% BSA</p>
<b>Purity</b>	Protein A purified
<b>Clonality</b>	Monoclonal
<b>Clone number</b>	EPR19899
<b>Isotype</b>	IgG

## Applications

### The Abpromise guarantee

Our **Abpromise guarantee** covers the use of ab206423 in the following tested applications.

The application notes include recommended starting dilutions; optimal dilutions/concentrations should be determined by the end user.

Application	Abreviews	Notes
WB		1/1000. Detects a band of approximately 6 kDa (predicted molecular weight: 133 kDa).

## Target

### Function

EGF stimulates the growth of various epidermal and epithelial tissues in vivo and in vitro and of some fibroblasts in cell culture. Magnesiotropic hormone that stimulates magnesium reabsorption in the renal distal convoluted tubule via engagement of EGFR and activation of the magnesium channel TRPM6. Can induce neurite outgrowth in motoneurons of the pond snail *Lymnaea stagnalis* in vitro (PubMed:10964941).

### Tissue specificity

Expressed in kidney, salivary gland, cerebrum and prostate.

### Involvement in disease

Hypomagnesemia 4

### Sequence similarities

Contains 9 EGF-like domains.

Contains 9 LDL-receptor class B repeats.

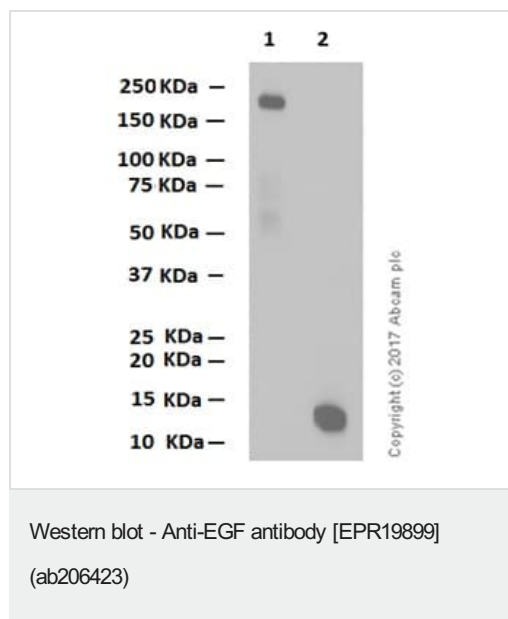
### Post-translational modifications

O-glycosylated with core 1-like and core 2-like glycans. It is uncertain if Ser-954 or Thr-955 is O-glycosylated. The modification here shows glycan heterogeneity: HexHexNAc (major) and Hex2HexNAc2 (minor).

### Cellular localization

Membrane.

## Images



**All lanes :** Anti-EGF antibody [EPR19899] (ab206423) at 1/1000 dilution

**Lane 1 :** Recombinant Human Pro-EGF Protein (aa 21-1023) with His-Tag

**Lane 2 :** Recombinant Human EGF recombinant protein (aa971-1023)

Lysates/proteins at 0.015 µg per lane.

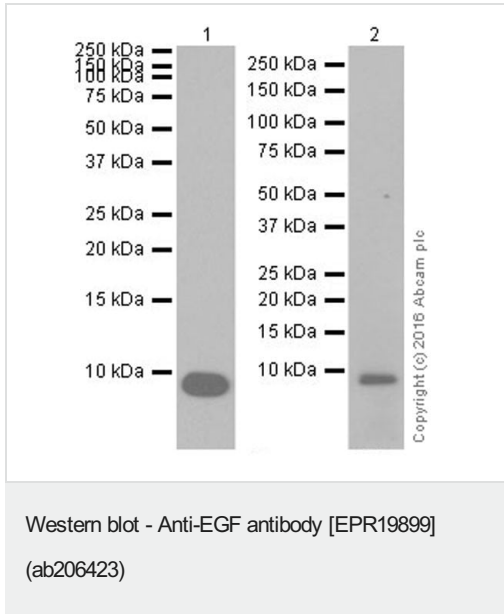
### Secondary

**All lanes :** Goat Anti-Rabbit IgG H&L (HRP) (**ab97051**) at 1/20000 dilution

**Predicted band size:** 133 kDa

Blocking and Diluting buffer: 5% NFDM/TBST

Exposure time: 1 second



**All lanes :** Anti-EGF antibody [EPR19899] (ab206423) at 1/1000 dilution

**Lane 1 :** Human EGF recombinant protein (aa971-1023)

**Lane 2 :** Mouse EGF recombinant protein (aa977-1029)

Lysates/proteins at 0.01 µg per lane.

### Secondary

**Lane 1 :** Goat Anti-Rabbit IgG H&L (HRP) ([ab97051](#)) at 1/100000 dilution

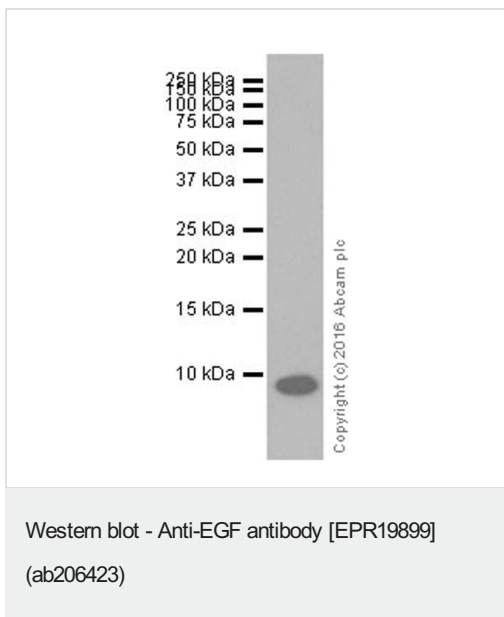
**Lane 2 :** Goat Anti-Rabbit IgG H&L (HRP) ([ab97051](#)) at 1/20000 dilution

**Predicted band size:** 133 kDa

**Observed band size:** 6 kDa

**Exposure time:** 30 seconds

Blocking/Dilution buffer: 5% NFDM/TBST.



Anti-EGF antibody [EPR19899] (ab206423) at 1/1000 dilution +  
Mouse salivary gland lysate at 10 µg

### Secondary

Goat Anti-Rabbit IgG H&L (HRP) ([ab97051](#)) at 1/100000 dilution

**Predicted band size:** 133 kDa

**Observed band size:** 6 kDa





**Exposure time:** 3 minutes

Blocking/Dilution buffer: 5% NFDM/TBST.

The expression profile/ molecular weight observed is consistent

with what has been described in the literature (PMID:2268351 & 7499272).

Why choose a recombinant antibody?

 <p><b>Research with confidence</b> Consistent and reproducible results</p>	 <p><b>Long-term and scalable supply</b> Recombinant technology</p>
 <p><b>Success from the first experiment</b> Confirmed specificity</p>	 <p><b>Ethical standards compliant</b> Animal-free production</p>

Anti-EGF antibody [EPR19899] (ab206423)

**Please note:** All products are "FOR RESEARCH USE ONLY. NOT FOR USE IN DIAGNOSTIC PROCEDURES"

### Our Abpromise to you: Quality guaranteed and expert technical support

---

- Replacement or refund for products not performing as stated on the datasheet
- Valid for 12 months from date of delivery
- Response to your inquiry within 24 hours
- We provide support in Chinese, English, French, German, Japanese and Spanish
- Extensive multi-media technical resources to help you
- We investigate all quality concerns to ensure our products perform to the highest standards

If the product does not perform as described on this datasheet, we will offer a refund or replacement. For full details of the Abpromise, please visit <https://www.abcam.com/abpromise> or contact our technical team.

### Terms and conditions

---

- Guarantee only valid for products bought direct from Abcam or one of our authorized distributors