

Product datasheet

Anti-Egr1 antibody ab6054

★★★★★ [1 Abreviews](#) [3 References](#) [2 Images](#)

Overview

Product name Anti-Egr1 antibody

Description Rabbit polyclonal to Egr1

① This product is a **fast track antibody**. It has been affinity purified and shows high titre values against the immunizing peptide by ELISA.

[Read the terms of use »](#)

Host species Rabbit

Species reactivity **Reacts with:** Mouse, Human

Predicted to work with: Rat 

Immunogen Synthetic peptide:

GEQPYEHLTAESFPDI-C

conjugated to KLH, corresponding to amino acids 93-108 of Human Egr1.

 [Run BLAST with](#)

 [Run BLAST with](#)

General notes

The Life Science industry has been in the grips of a reproducibility crisis for a number of years. Abcam is leading the way in addressing this with our range of recombinant monoclonal antibodies and knockout edited cell lines for gold-standard validation. Please check that this product meets your needs before purchasing.

If you have any questions, special requirements or concerns, please send us an inquiry and/or contact our Support team ahead of purchase. Recommended alternatives for this product can be found below, along with publications, customer reviews and Q&As

Properties

Form Liquid

Storage instructions Shipped at 4°C. Store at +4°C short term (1-2 weeks). Upon delivery aliquot. Store at -20°C or -80°C. Avoid freeze / thaw cycle.

Storage buffer Preservative: 0.01% Sodium azide
Constituents: 0.42% Potassium phosphate, 0.87% Sodium chloride

Purity Immunogen affinity purified

Clonality Polyclonal

Isotype

IgG

Applications

Fast track antibodies constitute a diverse group of products that have been released to accelerate your research, but are not yet fully characterized. They have all been affinity purified and show high titre values against the immunizing peptide (by ELISA).

Fast track terms of use

Application	Abreviews	Notes
WB	★★★★★ (1)	
IHC-P		

Application notes

Tested in peptide ELISA.

We have detected a band of 58kDa in mouse embryonic fibroblast whole cell lysate, but we have failed to detect a band at 83kDa (expected size from data from other antibodies). We would appreciate any customer feedback for this antibody.

Not tested in other applications.

Optimal dilutions/concentrations should be determined by the end user.

Target

Function

Transcriptional regulator. Recognizes and binds to the DNA sequence 5'-CGCCCCCGC-3'(EGR-site). Activates the transcription of target genes whose products are required for mitogenesis and differentiation.

Sequence similarities

Belongs to the EGR C2H2-type zinc-finger protein family.
Contains 3 C2H2-type zinc fingers.

Cellular localization

Nucleus.

Images

This Fast-Track antibody is not yet fully characterised. These images represent **inconclusive preliminary data**.



Western blot - Anti-Egr1 antibody (ab6054)

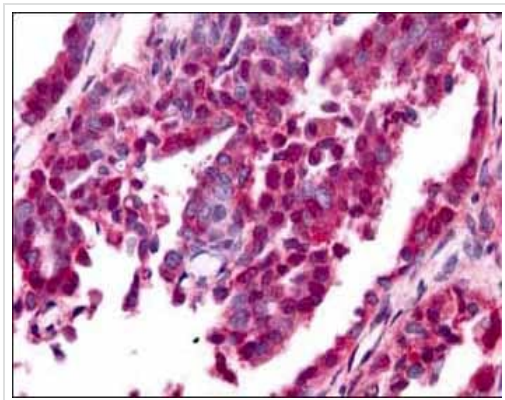
Anti-Egr1 antibody (ab6054) at 1/1500 dilution + Mouse embryonic fibroblast whole cell lysate at 35 µg

Secondary

Goat-anti-Rabbit IgG [H&L] at 1/10000 dilution

Predicted band size: 57 kDa

Observed band size: 58 kDa



Immunohistochemistry (Formalin/PFA-fixed paraffin-embedded sections) - Anti-Egr1 antibody (ab6054)

ab6054 at 10 µg/ml staining human ovarian carcinoma.

Please note: All products are "FOR RESEARCH USE ONLY. NOT FOR USE IN DIAGNOSTIC PROCEDURES"

Terms and conditions

- Guarantee only valid for products bought direct from Abcam or one of our authorized distributors