

Product datasheet

Anti-EHMT1/GLP antibody [B0422] ab41969

★★★★★ 6 Abreviews 27 References 2 Images

Overview

Product name	Anti-EHMT1/GLP antibody [B0422]
Description	Mouse monoclonal [B0422] to EHMT1/GLP
Host species	Mouse
Tested applications	Suitable for: ICC/IF
Species reactivity	Reacts with: Mouse
Immunogen	Recombinant fragment corresponding to Mouse EHMT1/GLP aa 134-234. Database link: Q5DW34
Positive control	WT mouse ES cell
General notes	<p>This product was changed from ascites to tissue culture supernatant on 3rd April 2019. Please note that the dilutions may need to be adjusted accordingly. If you have any questions, please do not hesitate to contact our scientific support team.</p> <p>The Life Science industry has been in the grips of a reproducibility crisis for a number of years. Abcam is leading the way in addressing this with our range of recombinant monoclonal antibodies and knockout edited cell lines for gold-standard validation. Please check that this product meets your needs before purchasing.</p> <p>If you have any questions, special requirements or concerns, please send us an inquiry and/or contact our Support team ahead of purchase. Recommended alternatives for this product can be found below, along with publications, customer reviews and Q&As</p>

Properties

Form	Liquid
Storage instructions	Shipped at 4°C. Store at +4°C short term (1-2 weeks). Upon delivery aliquot. Store at -20°C or -80°C. Avoid freeze / thaw cycle.
Storage buffer	pH: 7 Preservative: 0.1% Sodium azide Constituent: PBS
Purity	Tissue culture supernatant
Clonality	Monoclonal
Clone number	B0422

Myeloma	NS1
Isotype	IgG2a

Applications

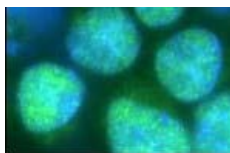
The Abpromise guarantee Our **Abpromise guarantee** covers the use of ab41969 in the following tested applications. The application notes include recommended starting dilutions; optimal dilutions/concentrations should be determined by the end user.

Application	Abreviews	Notes
ICC/IF	★★★★★ (2)	Use at an assay dependent concentration.

Target

Function	Histone methyltransferase that specifically mono- and dimethylates 'Lys-9' of histone H3 (H3K9me1 and H3K9me2, respectively) in euchromatin. H3K9me represents a specific tag for epigenetic transcriptional repression by recruiting HP1 proteins to methylated histones. Also weakly methylates 'Lys-27' of histone H3 (H3K27me). Also required for DNA methylation, the histone methyltransferase activity is not required for DNA methylation, suggesting that these 2 activities function independently. Probably targeted to histone H3 by different DNA-binding proteins like E2F6, MGA, MAX and/or DP1. During G0 phase, it probably contributes to silencing of MYC- and E2F-responsive genes, suggesting a role in G0/G1 transition in cell cycle. In addition to the histone methyltransferase activity, also methylates non-histone proteins: mediates dimethylation of 'Lys-373' of p53/TP53.
Tissue specificity	Widely expressed.
Involvement in disease	Defects in EHMT1 are the cause of chromosome 9q subtelomeric deletion syndrome (9q-syndrome) [MIM:610253]. Common features seen in these patients are severe mental retardation, hypotonia, brachy(micro)cephaly, epileptic seizures, flat face with hypertelorism, synophrys, anteverted nares, cupid bow or tented upper lip, everted lower lip, prognathism, macroglossia, conotruncal heart defects, and behavioral problems.
Sequence similarities	Belongs to the histone-lysine methyltransferase family. Contains 8 ANK repeats. Contains 1 pre-SET domain. Contains 1 SET domain.
Domain	The ANK repeats recognize and bind RELA subunit of NF-kappa-B, when RELA is monomethylated at 'Lys-310' (By similarity). They also specifically recognize and bind H3K9me1 and H3K9me2. The SET domain mediates interaction with WIZ.
Post-translational modifications	Phosphorylated upon DNA damage, probably by ATM or ATR.
Cellular localization	Nucleus. Chromosome. Associates with euchromatic regions.

Images



Immunocytochemistry/ Immunofluorescence - Anti-EHMT1/GLP antibody [B0422] (ab41969)

Ab41969 at 5 µg/ml staining WT mouse ES cell (Positive).

This image was generated using the ascites version of the product.



Immunocytochemistry/ Immunofluorescence - Anti-EHMT1/GLP antibody [B0422] (ab41969)

Ab41969 at 5µg/ml staining GLP KO mouse ES cell (Negative).

This image was generated using the ascites version of the product.

Please note: All products are "FOR RESEARCH USE ONLY. NOT FOR USE IN DIAGNOSTIC PROCEDURES"

Our Abpromise to you: Quality guaranteed and expert technical support

- Replacement or refund for products not performing as stated on the datasheet
- Valid for 12 months from date of delivery
- Response to your inquiry within 24 hours
- We provide support in Chinese, English, French, German, Japanese and Spanish
- Extensive multi-media technical resources to help you
- We investigate all quality concerns to ensure our products perform to the highest standards

If the product does not perform as described on this datasheet, we will offer a refund or replacement. For full details of the Abpromise, please visit <https://www.abcam.com/abpromise> or contact our technical team.

Terms and conditions

- Guarantee only valid for products bought direct from Abcam or one of our authorized distributors