




Product datasheet

Anti-EID1 antibody [26] ab78323

2 Images

Overview

Product name	Anti-EID1 antibody [26]
Description	Mouse monoclonal [26] to EID1
Host species	Mouse
Tested applications	Suitable for: ICC/IF, WB
Species reactivity	Reacts with: Human Predicted to work with: Cow, Cynomolgus monkey, Orangutan 
Immunogen	Synthetic peptide: YEKTPFDQLAFIEELFSLMVVNRLTEELGC , corresponding to amino acids 159 - 187 of Human EID1  Run BLAST with  Run BLAST with
Positive control	extracts from MCF7 cells transfected with EID1
General notes	<p>The Life Science industry has been in the grips of a reproducibility crisis for a number of years. Abcam is leading the way in addressing this with our range of recombinant monoclonal antibodies and knockout edited cell lines for gold-standard validation. Please check that this product meets your needs before purchasing.</p> <p>If you have any questions, special requirements or concerns, please send us an inquiry and/or contact our Support team ahead of purchase. Recommended alternatives for this product can be found below, along with publications, customer reviews and Q&As</p>

Properties

Form	Liquid
Storage instructions	Shipped at 4°C. Upon delivery aliquot and store at -20°C or -80°C. Avoid repeated freeze / thaw cycles.
Storage buffer	pH: 6 Constituents: 50% Glycerol (glycerin, glycerine), PBS
Purity	Ion Exchange Chromatography
Purification notes	ab78323 was purified by propriety chromatography under mild conditions as IgG fraction from serum free growth medium of mouse hybridoma clone and sterilized by filtration.
Clonality	Monoclonal

Clone number	26
Isotype	IgG2a
Light chain type	kappa

Applications

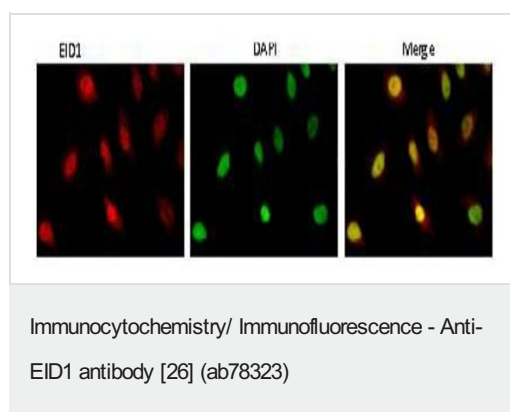
The Abpromise guarantee Our **Abpromise guarantee** covers the use of ab78323 in the following tested applications. The application notes include recommended starting dilutions; optimal dilutions/concentrations should be determined by the end user.

Application	Abreviews	Notes
ICC/IF		Use a concentration of 1 - 5 µg/ml.
WB		Use a concentration of 1 µg/ml. Predicted molecular weight: 21 kDa.

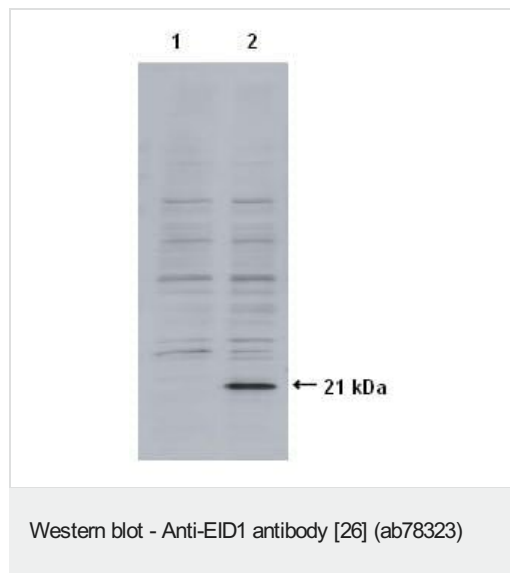
Target

Function	Interacts with RB1 and EP300 and acts as a repressor of MYOD1 transactivation. Inhibits EP300 and CBP histone acetyltransferase activity. May be involved in coupling cell cycle exit to the transcriptional activation of genes required for cellular differentiation. May act as a candidate coinhibitory factor for NR0B2 that can be directly linked to transcription inhibitory mechanisms.
Tissue specificity	Widely expressed. Most abundantly expressed in heart, skeletal muscle, pancreas, brain and testis. Expressed at much lower levels in placenta and peripheral blood leukocyte. Barely detectable in lung. Also weakly expressed in lung carcinoma A549 and various leukemia cell lines.
Developmental stage	Expression decreased with development in ventricular tissue while remaining highly expressed in adult atrial tissue. In primary cultures of human skeletal myocytes, expression decreased during myogenic differentiation (at protein level).
Post-translational modifications	Ubiquitinated in U-2OS osteosarcoma cells and is rapidly degraded by proteasome as cells exit the cell cycle exit.
Cellular localization	Nucleus. Cytoplasm. May shuttle between nucleus and cytoplasm.

Images



ab78323 staining EID1 in HeLa cells by ICC/IF (Immunocytochemistry/immunofluorescence). Cells were fixed with 4% paraformaldehyde, permeabilized with Triton X-100 0.25% in PBS and blocked with 1.5% BSA for 30 minutes. Samples were incubated with primary antibody (1/100 in PBS + 1% BSA) overnight at 4°C. An Alexa Fluor®488-conjugated Goat anti-mouse IgG polyclonal (1/1000 in PBS + 1% BSA) was used as the secondary antibody incubated for 1 hour. DAPI was used to stain the nuclear DNA.



All lanes : Anti-EID1 antibody [26] (ab78323) at 1 µg/ml

Lane 1 : extracts from MCF7 cells transfected with control vector pCMV1

Lane 2 : extracts from MCF7 cells transfected with the EID1 expression vector pcDNA3/EID1

Secondary

All lanes : HRP-conjugated mouse IgG

Predicted band size: 21 kDa

Observed band size: 21 kDa

Please note: All products are "FOR RESEARCH USE ONLY. NOT FOR USE IN DIAGNOSTIC PROCEDURES"

Our Abpromise to you: Quality guaranteed and expert technical support

- Replacement or refund for products not performing as stated on the datasheet
- Valid for 12 months from date of delivery
- Response to your inquiry within 24 hours
- We provide support in Chinese, English, French, German, Japanese and Spanish
- Extensive multi-media technical resources to help you
- We investigate all quality concerns to ensure our products perform to the highest standards

If the product does not perform as described on this datasheet, we will offer a refund or replacement. For full details of the Abpromise, please visit <https://www.abcam.com/abpromise> or contact our technical team.

Terms and conditions

- Guarantee only valid for products bought direct from Abcam or one of our authorized distributors