

Product datasheet

Anti-eIF1A antibody [EPR12466(B)] α ab177939

Recombinant RabMAb

[6 References](#) [11 Images](#)

Overview

Product name	Anti-eIF1A antibody [EPR12466(B)]
Description	Rabbit monoclonal [EPR12466(B)] to eIF1A
Host species	Rabbit
Specificity	The mouse and rat recommendation is based on the WB results. We do not guarantee IHC-P for mouse and rat.
Tested applications	Suitable for: Flow Cyt (Intra), WB, ICC/IF, IHC-P, IP
Species reactivity	Reacts with: Mouse, Rat, Human
Immunogen	Synthetic peptide. This information is proprietary to Abcam and/or its suppliers.
Positive control	WB: HeLa, Jurkat, A375 and 293T cell lysates, mouse and rat brain tissue lysates; IHC-P: Human endometrial carcinoma tissue; Human kidney tissue; ICC/IF: HeLa and 293T cells. Flow Cyt (intra): HeLa cells IP: HeLa cells
General notes	<p>This product is a recombinant monoclonal antibody, which offers several advantages including:</p> <ul style="list-style-type: none"> - High batch-to-batch consistency and reproducibility - Improved sensitivity and specificity - Long-term security of supply - Animal-free production <p>For more information see here.</p> <p>Our RabMAb[®] technology is a patented hybridoma-based technology for making rabbit monoclonal antibodies. For details on our patents, please refer to RabMAb[®] patents.</p>

Properties

Form	Liquid
Storage instructions	Shipped at 4°C. Store at +4°C short term (1-2 weeks). Upon delivery aliquot. Store at -20°C long term. Avoid freeze / thaw cycle.
Storage buffer	Preservative: 0.01% Sodium azide Constituents: 59% PBS, 40% Glycerol (glycerin, glycerine), 0.05% BSA
Purity	Protein A purified
Clonality	Monoclonal

Clone number	EPR12466(B)
Isotype	IgG

Applications

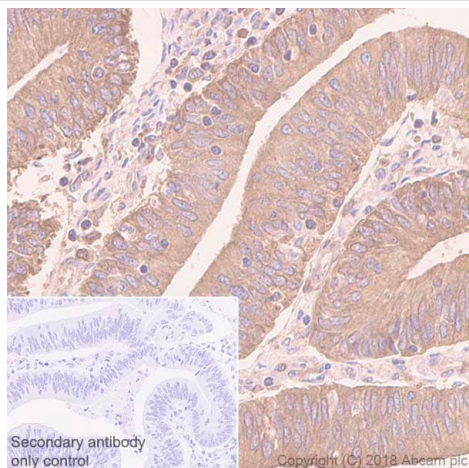
The Abpromise guarantee Our **Abpromise guarantee** covers the use of ab177939 in the following tested applications. The application notes include recommended starting dilutions; optimal dilutions/concentrations should be determined by the end user.

Application	Abreviews	Notes
Flow Cyt (Intra)		1/60.
WB		1/10000 - 1/50000. Detects a band of approximately 16 kDa (predicted molecular weight: 16 kDa). The mouse and rat recommendation is based on the WB results. We do not guarantee IHC-P for mouse and rat.
ICC/IF		1/50 - 1/100.
IHC-P		1/350. Perform heat mediated antigen retrieval before commencing with IHC staining protocol. See <u>IHC antigen retrieval protocols</u> . For unpurified use at 1/50 - 1/100.
IP		1/10 - 1/100.

Target

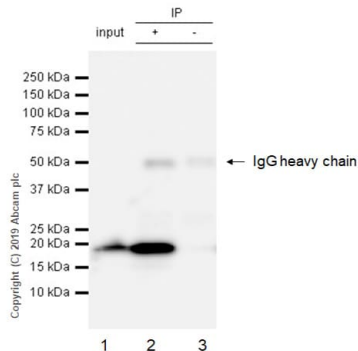
Relevance	eIF1A is an essential eukaryotic translation initiation factor. The protein is required for the binding of the 43S complex (a 40S subunit, eIF2/GTP/Met-tRNAi and eIF3) to the 5' end of capped RNA (referenced from entrez gene).
Cellular localization	Cytoplasmic and Nuclear

Images



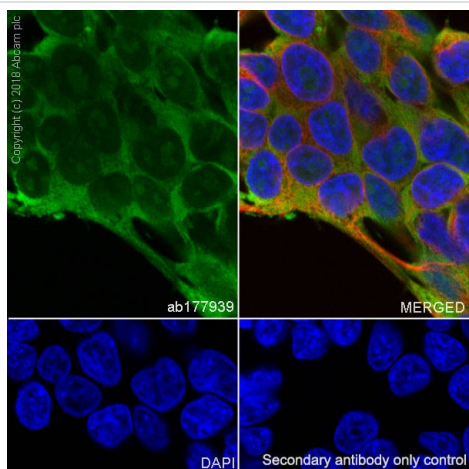
Immunohistochemistry (Formalin/PFA-fixed paraffin-embedded sections) - Anti-eIF1A antibody
[EPR12466(B)] (ab177939)

Immunohistochemistry (Formalin/PFA-fixed paraffin-embedded sections) analysis of Human endometrium cancer tissue sections labeling eIF1A with Purified ab177939 at 1:350 dilution (1.61 µg/ml). Heat mediated antigen retrieval was performed using Citrate buffer, pH 6.0. ImmunoHistoProbe one step HRP Polymer (ready to use) was used as the secondary antibody. Negative control: PBS instead of the primary antibody. Hematoxylin was used as a counterstain.



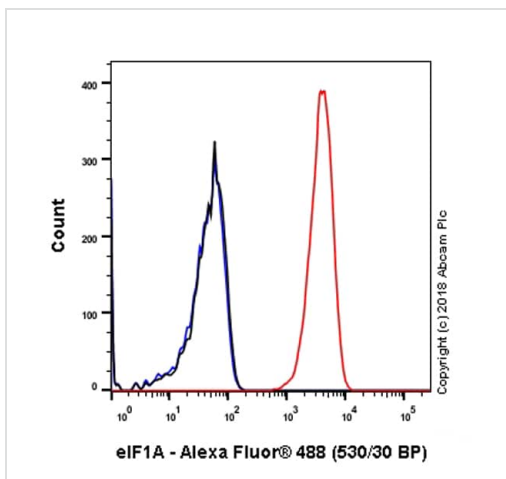
Immunoprecipitation - Anti-eIF1A antibody
[EPR12466(B)] (ab177939)

ab177939 (purified) at 1:30 dilution (2 µg) immunoprecipitating eIF1A in HeLa whole cell lysate.
Lane 1 (input): HeLa (Human cervix adenocarcinoma epithelial cell) whole cell lysate 10 µg
Lane 2 (+): ab177939 & HeLa whole cell lysate
Lane 3 (-): Rabbit monoclonal IgG (**ab172730**) instead of ab177939 in HeLa whole cell lysate
For western blotting, VeriBlot for IP Detection Reagent (HRP) (**ab131366**) was used for detection at 1:1000 dilution.
Blocking and diluting buffer: 5% NFDM/TBST.

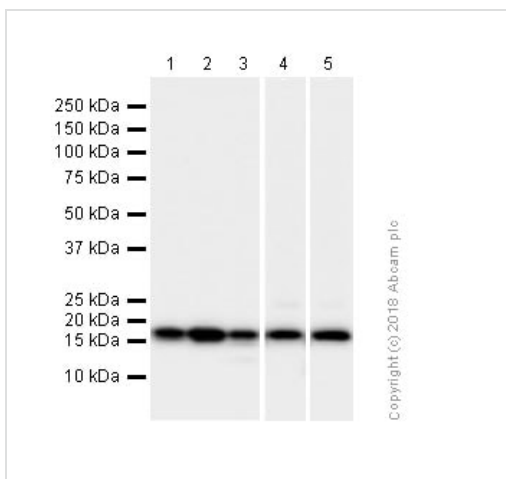


Immunocytochemistry/ Immunofluorescence - Anti-eIF1A antibody [EPR12466(B)] (ab177939)

Immunocytochemistry/ Immunofluorescence analysis of 293T (Human embryonic kidney epithelial cell) cells labeling eIF1A with Purified ab177939 at 1:100 dilution (5.7 µg/ml). Cells were fixed in 4% Paraformaldehyde and permeabilized with 0.1% tritonX-100. Cells were counterstained with Ab195889 Anti-alpha Tubulin antibody [DM1A] - Microtubule Marker (Alexa Fluor® 594) 1:200 (2.5 µg/ml). Goat anti rabbit IgG (Alexa Fluor® 488, **ab150077**) was used as the secondary antibody at 1:1000 (2 µg/ml) dilution. DAPI nuclear counterstain. PBS instead of the primary antibody was used as the secondary antibody only control.



Flow Cytometry (Intracellular) - Anti-eIF1A antibody
[EPR12466(B)] (ab177939)



Western blot - Anti-eIF1A antibody [EPR12466(B)]
(ab177939)

Intracellular Flow Cytometry analysis of HeLa (Human cervix adenocarcinoma epithelial cell) cells labeling eIF1A with Purified ab177939 at 1/60 dilution (10µg/ml) (red). Cells were fixed with 4% Paraformaldehyde. A Goat anti rabbit IgG (Alexa Fluor® 488, **ab150077**) secondary antibody was used at 1/2000. Isotype control - Rabbit monoclonal IgG (Black). Unlabeled control - Cell without incubation with primary antibody and secondary antibody (Blue).

All lanes : Anti-eIF1A antibody [EPR12466(B)] (ab177939) at 1/10000 dilution (Purified)

Lane 1 : HeLa (Human cervix adenocarcinoma epithelial cell) whole cell lysates

Lane 2 : HEK-293 (Human epithelial cell line from embryonic kidney) whole cell lysates

Lane 3 : Jurkat (Human T cell leukemia T lymphocyte) whole cell lysates

Lane 4 : Mouse brain lysates

Lane 5 : Rat brain lysates

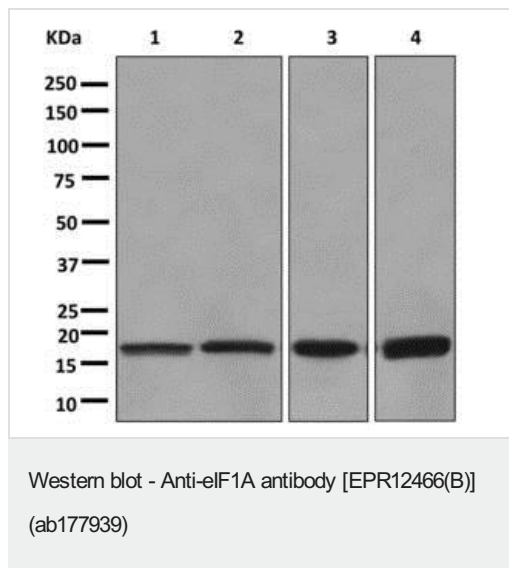
Lysates/proteins at 20 µg per lane.

Secondary

All lanes : Goat Anti-Rabbit IgG H&L (HRP) (**ab97051**) at 1/20000 dilution

Predicted band size: 16 kDa

Observed band size: 16 kDa



All lanes : Anti-eIF1A antibody [EPR12466(B)] (ab177939) at 1/10000 dilution

Lane 1 : HeLa cell lysate

Lane 2 : Jurkat cell lysate

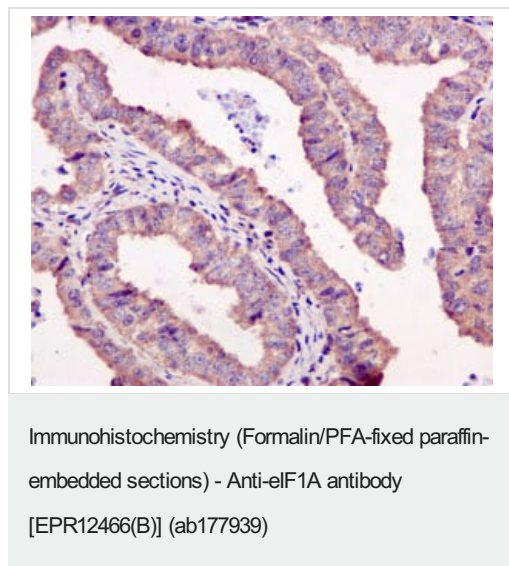
Lane 3 : A375 cell lysate

Lane 4 : 293T cell lysate

Lysates/proteins at 10 µg per lane.

Predicted band size: 16 kDa

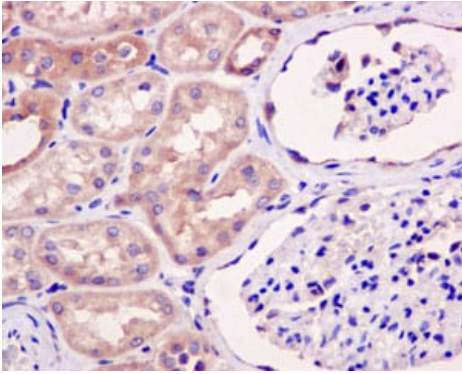
This image was generated using the unpurified version of the product.



Immunohistochemical analysis of paraffin-embedded Human endometrial carcinoma tissue labeling EIF1AX with ab177939 at 1/50 dilution.

This image was generated using the unpurified version of the product.

Heat mediated antigen retrieval was performed before commencing with IHC staining protocol.

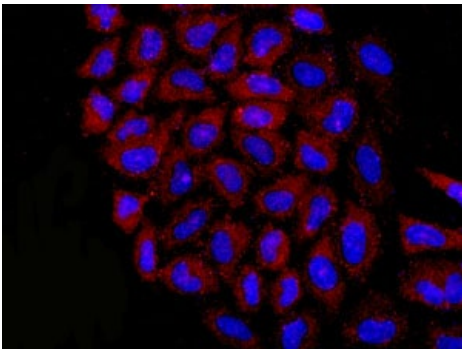


Immunohistochemistry (Formalin/PFA-fixed paraffin-embedded sections) - Anti-eIF1A antibody [EPR12466(B)] (ab177939)

Immunohistochemical analysis of paraffin-embedded Human kidney tissue labeling EIF1AX with ab177939 at 1/50 dilution.

This image was generated using the unpurified version of the product.

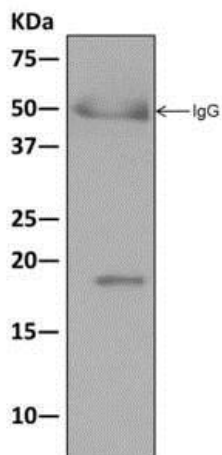
Heat mediated antigen retrieval was performed before commencing with IHC staining protocol.



Immunocytochemistry/ Immunofluorescence - Anti-eIF1A antibody [EPR12466(B)] (ab177939)

Immunofluorescent analysis of HeLa cells labeling EIF1AX with ab177939 at 1/50 dilution (red). DAPI nuclear staining (blue).

This image was generated using the unpurified version of the product.



Western blot analysis on immunoprecipitation pellet from A375 cell lysate immunoprecipitated using ab177939 at 1/10 dilution.

This image was generated using the unpurified version of the product.

Immunoprecipitation - Anti-elf1A antibody
[EPR12466(B)] (ab177939)

Why choose a
recombinant antibody?



**Research with
confidence**
Consistent and
reproducible results



**Long-term and
scalable supply**
Recombinant
technology



**Success from the
first experiment**
Confirmed
specificity



**Ethical standards
compliant**
Animal-free
production

Anti-elf1A antibody [EPR12466(B)] (ab177939)

Please note: All products are "FOR RESEARCH USE ONLY. NOT FOR USE IN DIAGNOSTIC PROCEDURES"

Our Abpromise to you: Quality guaranteed and expert technical support

- Replacement or refund for products not performing as stated on the datasheet
- Valid for 12 months from date of delivery
- Response to your inquiry within 24 hours
- We provide support in Chinese, English, French, German, Japanese and Spanish
- Extensive multi-media technical resources to help you
- We investigate all quality concerns to ensure our products perform to the highest standards

If the product does not perform as described on this datasheet, we will offer a refund or replacement. For full details of the Abpromise, please visit <https://www.abcam.com/abpromise> or contact our technical team.

Terms and conditions

- Guarantee only valid for products bought direct from Abcam or one of our authorized distributors