


## Product datasheet

### Anti-eIF1A antibody [EPR12467] ab172623

Recombinant RabMAb

[3 References](#) [6 Images](#)

#### Overview

<b>Product name</b>	Anti-eIF1A antibody [EPR12467]
<b>Description</b>	Rabbit monoclonal [EPR12467] to eIF1A
<b>Host species</b>	Rabbit
<b>Tested applications</b>	<b>Suitable for:</b> ICC/IF, IP, IHC-P, WB <b>Unsuitable for:</b> Flow Cyt
<b>Species reactivity</b>	<b>Reacts with:</b> Human <b>Predicted to work with:</b> Mouse, Rat, Rabbit, Chimpanzee, Orangutan 
<b>Immunogen</b>	Synthetic peptide. This information is proprietary to Abcam and/or its suppliers.
<b>Positive control</b>	HeLa, 293T, Jurkat, and A375 cell lysates; Colonic carcinoma tissue; Pancreas tissue; A375 cells; Immunoprecipitation pellet from HeLa whole cell lysate ( <a href="#">ab150035</a> )
<b>General notes</b>	<p>This product is a recombinant monoclonal antibody, which offers several advantages including:</p> <ul style="list-style-type: none"> <li>- High batch-to-batch consistency and reproducibility</li> <li>- Improved sensitivity and specificity</li> <li>- Long-term security of supply</li> <li>- Animal-free production</li> </ul> <p>For more information <a href="#">see here</a>.</p> <p>Our RabMAb<sup>®</sup> technology is a patented hybridoma-based technology for making rabbit monoclonal antibodies. For details on our patents, please refer to <a href="#">RabMAb<sup>®</sup> patents</a>.</p>

#### Properties

<b>Form</b>	Liquid
<b>Storage instructions</b>	Shipped at 4°C. Store at +4°C short term (1-2 weeks). Upon delivery aliquot. Store at -20°C long term. Avoid freeze / thaw cycle.
<b>Storage buffer</b>	pH: 7.20 Preservative: 0.01% Sodium azide Constituents: 9% PBS, 40% Glycerol (glycerin, glycerine), 0.05% BSA, 50% Tissue culture supernatant
<b>Purity</b>	Tissue culture supernatant
<b>Clonality</b>	Monoclonal

Clone number EPR12467

Isotype IgG

## Applications

**The Abpromise guarantee** Our **Abpromise guarantee** covers the use of ab172623 in the following tested applications.

The application notes include recommended starting dilutions; optimal dilutions/concentrations should be determined by the end user.

Application	Abreviews	Notes
ICC/IF		1/50 - 1/100.
IP		1/10 - 1/100.
IHC-P		1/50 - 1/100. Perform heat mediated antigen retrieval before commencing with IHC staining protocol.
WB		1/1000 - 1/10000. Predicted molecular weight: 16 kDa.

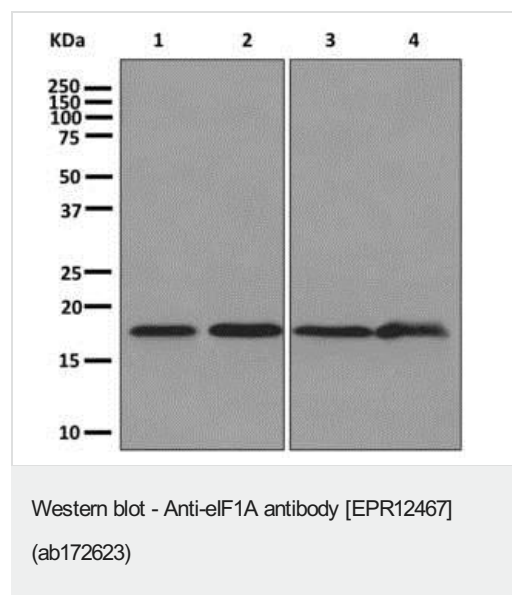
**Application notes** Is unsuitable for Flow Cyt.

## Target

**Relevance** eIF1A is an essential eukaryotic translation initiation factor. The protein is required for the binding of the 43S complex (a 40S subunit, eIF2/GTP/Met-tRNAi and eIF3) to the 5' end of capped RNA (referenced from entrez gene).

**Cellular localization** Cytoplasmic and Nuclear

## Images



**All lanes** : Anti-eIF1A antibody [EPR12467] (ab172623) at 1/1000 dilution

**Lane 1** : HeLa cell lysate

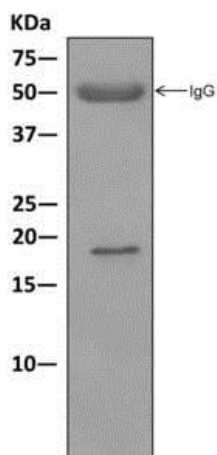
**Lane 2** : 293T cell lysate

**Lane 3** : Jurkat cell lysate

**Lane 4** : A375 cell lysate

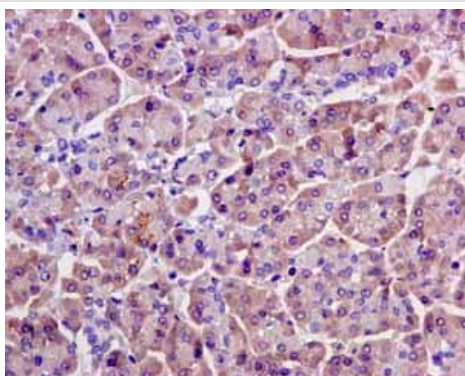
Lysates/proteins at 10 µg per lane.

**Predicted band size:** 16 kDa



Immunoprecipitation - Anti-eIF1A antibody  
[EPR12467] (ab172623)

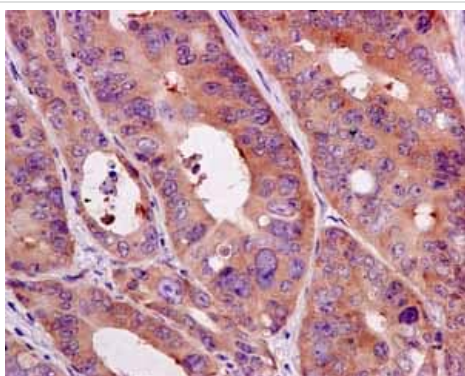
Western blot analysis on immunoprecipitation pellet from HeLa cell lysate labeling eIF1A with **ab172923** at 1/10 dilution.



Immunohistochemistry (Formalin/PFA-fixed paraffin-embedded sections) - Anti-eIF1A antibody  
[EPR12467] (ab172623)

Immunohistochemical analysis of paraffin-embedded human pancreas tissue labeling eIF1A with ab172623 at 1/50 dilution.

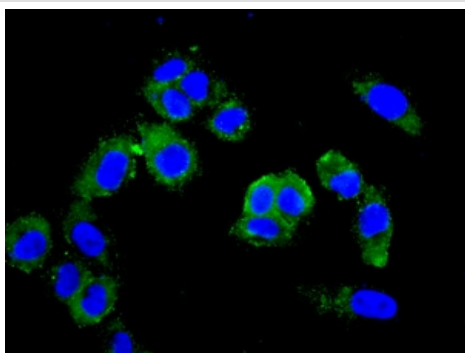
Perform heat mediated antigen retrieval before commencing with IHC staining protocol.



Immunohistochemistry (Formalin/PFA-fixed paraffin-embedded sections) - Anti-eIF1A antibody  
[EPR12467] (ab172623)

Immunohistochemical analysis of paraffin-embedded human colonic carcinoma tissue labeling eIF1A with ab172623 at 1/50 dilution.

Perform heat mediated antigen retrieval before commencing with IHC staining protocol.



Immunofluorescent analysis of A375 cells labeling eIF1A with ab172623 at 1/50 dilution (green) and counterstained with DAPI (blue)

Immunocytochemistry/ Immunofluorescence - Anti-eIF1A antibody [EPR12467] (ab172623)

Why choose a recombinant antibody?



**Research with confidence**  
Consistent and reproducible results



**Long-term and scalable supply**  
Recombinant technology



**Success from the first experiment**  
Confirmed specificity



**Ethical standards compliant**  
Animal-free production

Anti-eIF1A antibody [EPR12467] (ab172623)

**Please note:** All products are "FOR RESEARCH USE ONLY. NOT FOR USE IN DIAGNOSTIC PROCEDURES"

### Our Abpromise to you: Quality guaranteed and expert technical support

- Replacement or refund for products not performing as stated on the datasheet
- Valid for 12 months from date of delivery
- Response to your inquiry within 24 hours
- We provide support in Chinese, English, French, German, Japanese and Spanish
- Extensive multi-media technical resources to help you
- We investigate all quality concerns to ensure our products perform to the highest standards

If the product does not perform as described on this datasheet, we will offer a refund or replacement. For full details of the Abpromise, please visit <https://www.abcam.com/abpromise> or contact our technical team.

### Terms and conditions

- Guarantee only valid for products bought direct from Abcam or one of our authorized distributors