

### Anti-eIF2B4 antibody ab241573

4 Images

#### Overview

<b>Product name</b>	Anti-eIF2B4 antibody
<b>Description</b>	Rabbit polyclonal to eIF2B4
<b>Host species</b>	Rabbit
<b>Tested applications</b>	<b>Suitable for:</b> IP, IHC-P, WB
<b>Species reactivity</b>	<b>Reacts with:</b> Human
<b>Immunogen</b>	Synthetic peptide within Human eIF2B4 aa 50-100. The exact sequence is proprietary. (NP_001029288.1). Database link: <a href="#">Q9UI10</a>
<b>Positive control</b>	WB: HeLa and HEK-293T whole cell lysates. IP: HeLa whole cell lysate. IHC-P: Human colon carcinoma and breast carcinoma tissues.
<b>General notes</b>	<p>The Life Science industry has been in the grips of a reproducibility crisis for a number of years. Abcam is leading the way in addressing this with our range of recombinant monoclonal antibodies and knockout edited cell lines for gold-standard validation. Please check that this product meets your needs before purchasing.</p> <p>If you have any questions, special requirements or concerns, please send us an inquiry and/or contact our Support team ahead of purchase. Recommended alternatives for this product can be found below, along with publications, customer reviews and Q&amp;As</p>

#### Properties

<b>Form</b>	Liquid
<b>Storage instructions</b>	Shipped at 4°C. Store at +4°C short term (1-2 weeks). Upon delivery aliquot. Store at -20°C long term. Avoid freeze / thaw cycle.
<b>Storage buffer</b>	pH: 6.8 Preservative: 0.09% Sodium azide Constituents: Tris buffered saline, 0.1% BSA
<b>Purity</b>	Immunogen affinity purified
<b>Purification notes</b>	ab241573 was affinity purified using an epitope specific to eIF2B delta/EIF2B4 immobilized on solid support.
<b>Clonality</b>	Polyclonal
<b>Isotype</b>	IgG

## Applications

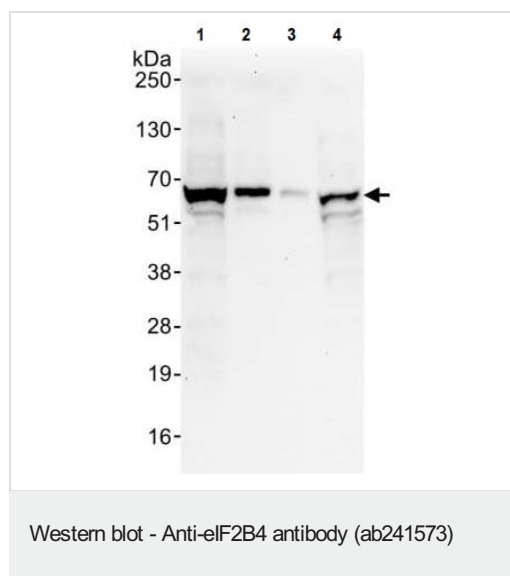
**The Abpromise guarantee** Our **Abpromise guarantee** covers the use of ab241573 in the following tested applications. The application notes include recommended starting dilutions; optimal dilutions/concentrations should be determined by the end user.

Application	Abreviews	Notes
IP		Use at 2-5 µg/mg of lysate.
IHC-P		1/200 - 1/1000. Perform heat mediated antigen retrieval with citrate buffer pH 6 before commencing with IHC staining protocol.
WB		1/2000 - 1/10000. Predicted molecular weight: 57 kDa.

## Target

<b>Function</b>	Catalyzes the exchange of eukaryotic initiation factor 2-bound GDP for GTP.
<b>Involvement in disease</b>	Leukodystrophy with vanishing white matter
<b>Sequence similarities</b>	Belongs to the eIF-2B alpha/beta/delta subunits family.

## Images



**All lanes :** Anti-eIF2B4 antibody (ab241573) at 0.04 µg/ml

**Lane 1 :** HeLa (human epithelial cell line from cervix adenocarcinoma) whole cell lysate at 50 µg

**Lane 2 :** HeLa whole cell lysate at 15 µg

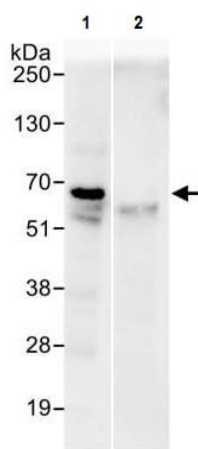
**Lane 3 :** HeLa whole cell lysate at 5 µg

**Lane 4 :** HEK-293T (human epithelial cell line from embryonic kidney transformed with large T antigen) whole cell lysate at 50 µg

Developed using the ECL technique.

**Predicted band size:** 57 kDa

**Exposure time:** 30 seconds



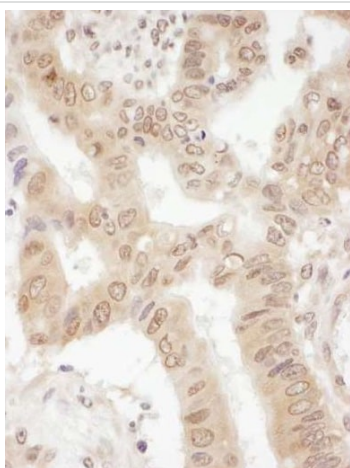
Immunoprecipitation - Anti-eIF2B4 antibody  
(ab241573)

eIF2B4 was immunoprecipitated from HEK-293T (human epithelial cell line from embryonic kidney transformed with large T antigen) whole cell lysate (1 mg for IP, 20% of IP loaded) with ab241573 at 6 µg/mg lysate. Western blot was performed from the immunoprecipitate using ab241573 at 0.4 µg/ml.

**Lane 1:** ab241573 IP in HEK-293T whole cell lysate.

**Lane 2:** Control IgG IP in HEK-293T whole cell lysate.

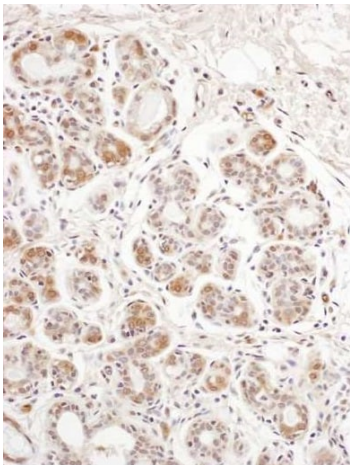
Detection: Chemiluminescence with exposure time of 10 seconds.



Immunohistochemistry (Formalin/PFA-fixed paraffin-embedded sections) - Anti-eIF2B4 antibody  
(ab241573)

Formalin-fixed, paraffin-embedded human colon carcinoma tissue stained for eIF2B4 using ab241573 at 1/200 dilution in immunohistochemical analysis.

**Detection:** DAB staining.



Formalin-fixed, paraffin-embedded human breast carcinoma tissue stained for eIF2B4 using ab241573 at 1/200 dilution in immunohistochemical analysis.

**Detection:** DAB staining.

Immunohistochemistry (Formalin/PFA-fixed paraffin-embedded sections) - Anti-eIF2B4 antibody (ab241573)

**Please note:** All products are "FOR RESEARCH USE ONLY. NOT FOR USE IN DIAGNOSTIC PROCEDURES"

### Our Abpromise to you: Quality guaranteed and expert technical support

---

- Replacement or refund for products not performing as stated on the datasheet
- Valid for 12 months from date of delivery
- Response to your inquiry within 24 hours
- We provide support in Chinese, English, French, German, Japanese and Spanish
- Extensive multi-media technical resources to help you
- We investigate all quality concerns to ensure our products perform to the highest standards

If the product does not perform as described on this datasheet, we will offer a refund or replacement. For full details of the Abpromise, please visit <https://www.abcam.com/abpromise> or contact our technical team.

### Terms and conditions

---

- Guarantee only valid for products bought direct from Abcam or one of our authorized distributors