


## Product datasheet

# Anti-EIF3S2 antibody ab40745

[3 References](#) [3 Images](#)

### Overview

---

|                            |                                                                                                                                                                                                                                                                                                                                                                                                                                                                                                                                                                                                                 |
|----------------------------|-----------------------------------------------------------------------------------------------------------------------------------------------------------------------------------------------------------------------------------------------------------------------------------------------------------------------------------------------------------------------------------------------------------------------------------------------------------------------------------------------------------------------------------------------------------------------------------------------------------------|
| <b>Product name</b>        | Anti-EIF3S2 antibody                                                                                                                                                                                                                                                                                                                                                                                                                                                                                                                                                                                            |
| <b>Description</b>         | Rabbit polyclonal to EIF3S2                                                                                                                                                                                                                                                                                                                                                                                                                                                                                                                                                                                     |
| <b>Host species</b>        | Rabbit                                                                                                                                                                                                                                                                                                                                                                                                                                                                                                                                                                                                          |
| <b>Tested applications</b> | <b>Suitable for:</b> ICC/IF, IHC-P, WB                                                                                                                                                                                                                                                                                                                                                                                                                                                                                                                                                                          |
| <b>Species reactivity</b>  | <b>Reacts with:</b> Human<br><b>Predicted to work with:</b> Mouse, Rabbit, Cow                                                                                                                                                                                                                                                                                                                                                                                                                                               |
| <b>Immunogen</b>           | Synthetic peptide conjugated to KLH derived from within residues 1 - 100 of Human EIF3S2. Read Abcam's proprietary immunogen policy (Peptide available as <a href="#">ab41639</a> .)                                                                                                                                                                                                                                                                                                                                                                                                                            |
| <b>Positive control</b>    | ab40745 gave a positive signal in the following human whole cell lysates: HeLa, Jurkat, HEK293, HepG2, MCF-7 and SHSY-5Y.                                                                                                                                                                                                                                                                                                                                                                                                                                                                                       |
| <b>General notes</b>       | <p>The Life Science industry has been in the grips of a reproducibility crisis for a number of years. Abcam is leading the way in addressing this with our range of recombinant monoclonal antibodies and knockout edited cell lines for gold-standard validation. Please check that this product meets your needs before purchasing.</p> <p>If you have any questions, special requirements or concerns, please send us an inquiry and/or contact our Support team ahead of purchase. Recommended alternatives for this product can be found below, along with publications, customer reviews and Q&amp;As</p> |

### Properties

---

|                             |                                                                                                                                                                                                                                                                                                                            |
|-----------------------------|----------------------------------------------------------------------------------------------------------------------------------------------------------------------------------------------------------------------------------------------------------------------------------------------------------------------------|
| <b>Form</b>                 | Liquid                                                                                                                                                                                                                                                                                                                     |
| <b>Storage instructions</b> | Shipped at 4°C. Store at +4°C short term (1-2 weeks). Upon delivery aliquot. Store at -20°C or -80°C. Avoid freeze / thaw cycle.                                                                                                                                                                                           |
| <b>Storage buffer</b>       | pH: 7.40<br>Preservative: 0.02% Sodium azide<br>Constituent: PBS<br><br>Batches of this product that have a concentration < 1mg/ml may have BSA added as a stabilising agent. If you would like information about the formulation of a specific lot, please contact our scientific support team who will be happy to help. |
| <b>Purity</b>               | Immunogen affinity purified                                                                                                                                                                                                                                                                                                |

|                  |            |
|------------------|------------|
| <b>Clonality</b> | Polyclonal |
| <b>Isotype</b>   | IgG        |

## Applications

**The Abpromise guarantee** Our **Abpromise guarantee** covers the use of ab40745 in the following tested applications.

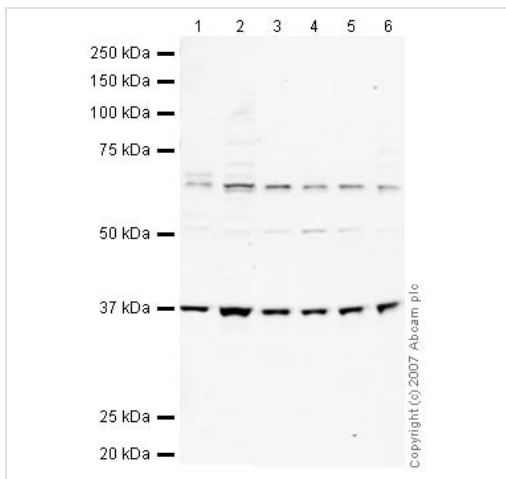
The application notes include recommended starting dilutions; optimal dilutions/concentrations should be determined by the end user.

| Application | Abreviews | Notes                                                                                                                 |
|-------------|-----------|-----------------------------------------------------------------------------------------------------------------------|
| ICC/IF      |           | Use a concentration of 1 µg/ml.                                                                                       |
| IHC-P       |           | Use a concentration of 5 µg/ml. Perform heat mediated antigen retrieval before commencing with IHC staining protocol. |
| WB          |           | Use a concentration of 1 µg/ml. Detects a band of approximately 36 kDa (predicted molecular weight: 36 kDa).          |

## Target

|                                         |                                                                                                                                                                                                                                                                                                                                                                                                                                                                                                                                                                                                                                                                                           |
|-----------------------------------------|-------------------------------------------------------------------------------------------------------------------------------------------------------------------------------------------------------------------------------------------------------------------------------------------------------------------------------------------------------------------------------------------------------------------------------------------------------------------------------------------------------------------------------------------------------------------------------------------------------------------------------------------------------------------------------------------|
| <b>Function</b>                         | Component of the eukaryotic translation initiation factor 3 (eIF-3) complex, which is required for several steps in the initiation of protein synthesis. The eIF-3 complex associates with the 40S ribosome and facilitates the recruitment of eIF-1, eIF-1A, eIF-2:GTP:methionyl-tRNA <sub>i</sub> and eIF-5 to form the 43S preinitiation complex (43S PIC). The eIF-3 complex stimulates mRNA recruitment to the 43S PIC and scanning of the mRNA for AUG recognition. The eIF-3 complex is also required for disassembly and recycling of post-termination ribosomal complexes and subsequently prevents premature joining of the 40S and 60S ribosomal subunits prior to initiation. |
| <b>Sequence similarities</b>            | Belongs to the eIF-3 subunit I family.<br>Contains 5 WD repeats.                                                                                                                                                                                                                                                                                                                                                                                                                                                                                                                                                                                                                          |
| <b>Post-translational modifications</b> | Phosphorylated by TGF-beta type II receptor.                                                                                                                                                                                                                                                                                                                                                                                                                                                                                                                                                                                                                                              |
| <b>Cellular localization</b>            | Cytoplasm.                                                                                                                                                                                                                                                                                                                                                                                                                                                                                                                                                                                                                                                                                |

## Images



Western blot - Anti-EIF3S2 antibody (ab40745)

**All lanes :** Anti-EIF3S2 antibody (ab40745) at 1 µg/ml

**Lane 1 :** HeLa (Human epithelial carcinoma cell line) Whole Cell Lysate

**Lane 2 :** Jurkat (Human T cell lymphoblast-like cell line) Whole Cell Lysate

**Lane 3 :** HEK293 Human embryonic kidney cell line Whole Cell Lysate

**Lane 4 :** HepG2 (Human hepatocellular liver carcinoma cell line) Whole Cell Lysate

**Lane 5 :** MCF7 (Human breast adenocarcinoma cell line) Whole Cell Lysate

**Lane 6 :** SHSY-5Y (Human neuroblastoma cell line) Whole Cell Lysate

Lysates/proteins at 10 µg per lane.

#### Secondary

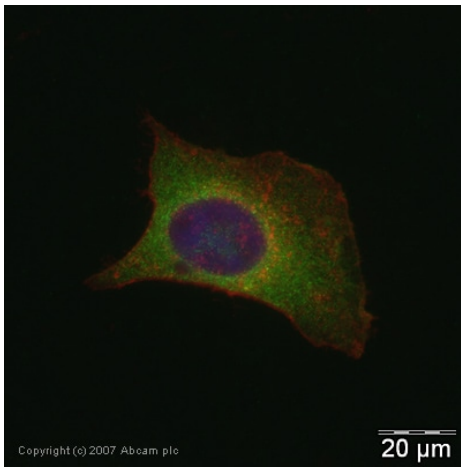
**All lanes :** IRDye 680 Conjugated Goat Anti-Rabbit IgG (H+L) at 1/10000 dilution

Performed under reducing conditions.

**Predicted band size:** 36 kDa

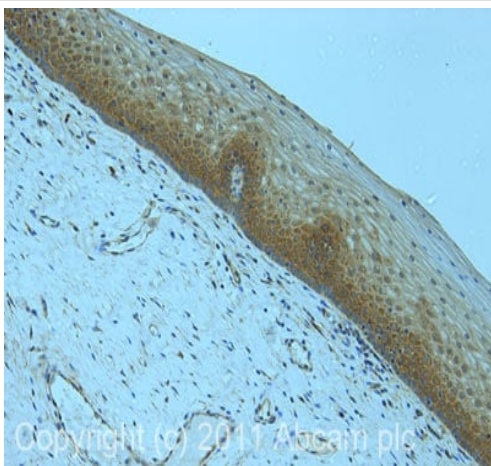
**Observed band size:** 36 kDa

**Additional bands at:** 68 kDa. We are unsure as to the identity of these extra bands.



Immunocytochemistry/ Immunofluorescence - Anti-EIF3S2 antibody (ab40745)

ICC/IF image of ab40745 stained human HeLa cells. The cells were PFA fixed (10 min), permeabilised in TBS-T (20 min) and incubated with the antibody (ab40745, 1µg/ml) for 1h at room temperature. 1%BSA / 10% normal goat serum / 0.3M glycine was used to quench autofluorescence and block non-specific protein-protein interactions. The secondary antibody (green) was Alexa Fluor® 488 goat anti-rabbit IgG (H+L) used at a 1/1000 dilution for 1h. Alexa Fluor® 594 WGA was used to label plasma membranes (red). DAPI was used to stain the cell nuclei (blue).



Immunohistochemistry (Formalin/PFA-fixed paraffin-embedded sections) - Anti-EIF3S2 antibody (ab40745)

IHC image of ab40745 staining in cervix formalin fixed paraffin embedded tissue section, performed on a Leica Bond™ system using the standard protocol F. The section was pre-treated using heat mediated antigen retrieval with sodium citrate buffer (pH6, epitope retrieval solution 1) for 20 mins. The section was then incubated with ab40745, 5µg/ml, for 15 mins at room temperature and detected using an HRP conjugated compact polymer system. DAB was used as the chromogen. The section was then counterstained with haematoxylin and mounted with DPX.

For other IHC staining systems (automated and non-automated) customers should optimize variable parameters such as antigen retrieval conditions, primary antibody concentration and antibody incubation times.

**Please note:** All products are "FOR RESEARCH USE ONLY. NOT FOR USE IN DIAGNOSTIC PROCEDURES"

### Our Abpromise to you: Quality guaranteed and expert technical support

- Replacement or refund for products not performing as stated on the datasheet
- Valid for 12 months from date of delivery
- Response to your inquiry within 24 hours

- We provide support in Chinese, English, French, German, Japanese and Spanish
- Extensive multi-media technical resources to help you
- We investigate all quality concerns to ensure our products perform to the highest standards

If the product does not perform as described on this datasheet, we will offer a refund or replacement. For full details of the Abpromise, please visit <https://www.abcam.com/abpromise> or contact our technical team.

### **Terms and conditions**

---

- Guarantee only valid for products bought direct from Abcam or one of our authorized distributors