


Product datasheet

Anti-EIF5 antibody [EPR12140(B)] ab170915

Recombinant RabMAb

[1 References](#) [6 Images](#)

Overview

Product name	Anti-EIF5 antibody [EPR12140(B)]
Description	Rabbit monoclonal [EPR12140(B)] to EIF5
Host species	Rabbit
Tested applications	Suitable for: Flow Cyt (Intra), WB, IHC-P, ICC/IF Unsuitable for: IP
Species reactivity	Reacts with: Human Predicted to work with: Mouse, Rat 
Immunogen	Synthetic peptide within Human EIF5 aa 1-100 (Cysteine residue). The exact sequence is proprietary. Database link: P55010
Positive control	K562, HeLa and HepG2 whole cell lysate (ab7900); Human colonic carcinoma and pancreas tissues; K562 and HepG2 cells.
General notes	This product is a recombinant monoclonal antibody, which offers several advantages including: <ul style="list-style-type: none"> - High batch-to-batch consistency and reproducibility - Improved sensitivity and specificity - Long-term security of supply - Animal-free production For more information see here . Our RabMAb [®] technology is a patented hybridoma-based technology for making rabbit monoclonal antibodies. For details on our patents, please refer to RabMAb[®] patents .

Properties

Form	Liquid
Storage instructions	Shipped at 4°C. Store at +4°C short term (1-2 weeks). Upon delivery aliquot. Store at -20°C long term. Avoid freeze / thaw cycle.
Storage buffer	pH: 7.2 Preservative: 0.01% Sodium azide Constituents: 9% PBS, 40% Glycerol (glycerin, glycerine), 0.05% BSA, 50% Tissue culture supernatant

Purity	Tissue culture supernatant
Clonality	Monoclonal
Clone number	EPR12140(B)
Isotype	IgG

Applications

The Abpromise guarantee Our **Abpromise guarantee** covers the use of ab170915 in the following tested applications.

The application notes include recommended starting dilutions; optimal dilutions/concentrations should be determined by the end user.

Application	Abreviews	Notes
Flow Cyt (Intra)		1/100 - 1/500. ab172730 - Rabbit monoclonal IgG, is suitable for use as an isotype control with this antibody.
WB		1/1000 - 1/10000. Predicted molecular weight: 49 kDa.
IHC-P		1/50 - 1/100. Perform heat mediated antigen retrieval with citrate buffer pH 6 before commencing with IHC staining protocol.
ICC/IF		1/100 - 1/250.

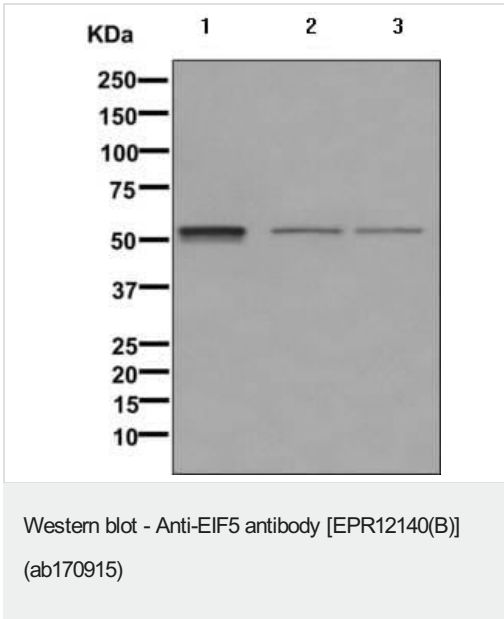
Application notes Is unsuitable for IP.

Target

Function Catalyzes the hydrolysis of GTP bound to the 40S ribosomal initiation complex (40S.mRNA.Met-tRNA[F].eIF-2.GTP) with the subsequent joining of a 60S ribosomal subunit resulting in the release of eIF-2 and the guanine nucleotide. The subsequent joining of a 60S ribosomal subunit results in the formation of a functional 80S initiation complex (80S.mRNA.Met-tRNA[F]).

Sequence similarities Belongs to the eIF-2-beta/eIF-5 family.
Contains 1 W2 domain.

Images



All lanes : Anti-EIF5 antibody [EPR12140(B)] (ab170915) at 1/1000 dilution

Lane 1 : K562 cell lysate

Lane 2 : HeLa cell lysate

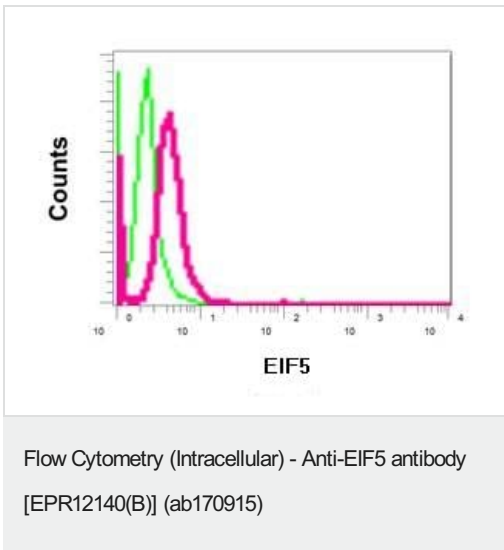
Lane 3 : HepG2 cell lysate

Lysates/proteins at 10 µg per lane.

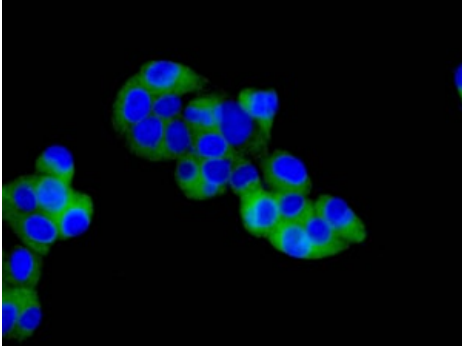
Secondary

All lanes : Goat anti-rabbit HRP-conjugated at 1/2000 dilution

Predicted band size: 49 kDa

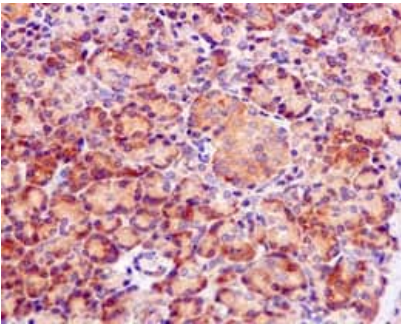


Intracellular flow cytometric analysis of permeabilized K562 cells labeling EIF5 with ab170915 at 1/100 dilution (red) compared to a rabbit IgG negative control (green).



Immunocytochemistry/ Immunofluorescence - Anti-EIF5 antibody [EPR12140(B)] (ab170915)

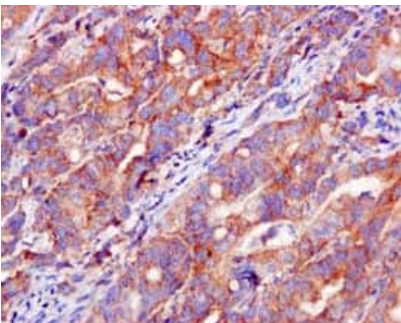
Immunofluorescence analysis of HepG2 cells labeling EIF5 with ab170915 at 1/100 dilution (green). DAPI nuclear staining (blue).



Immunohistochemistry (Formalin/PFA-fixed paraffin-embedded sections) - Anti-EIF5 antibody [EPR12140(B)] (ab170915)

Immunohistochemical analysis of paraffin-embedded Human pancreas tissue labeling EIF5 with ab170915 at 1/50 dilution.

Perform heat mediated antigen retrieval with citrate buffer pH 6 before commencing with IHC staining protocol.



Immunohistochemistry (Formalin/PFA-fixed paraffin-embedded sections) - Anti-EIF5 antibody [EPR12140(B)] (ab170915)

Immunohistochemical analysis of paraffin-embedded Human colonic carcinoma tissue labeling EIF5 with ab170915 at 1/50 dilution.

Perform heat mediated antigen retrieval with citrate buffer pH 6 before commencing with IHC staining protocol.

Why choose a recombinant antibody?



Research with confidence
Consistent and reproducible results

Long-term and scalable supply
Recombinant technology

Success from the first experiment
Confirmed specificity

Ethical standards compliant
Animal-free production

Anti-EIF5 antibody [EPR12140(B)] (ab170915)

Please note: All products are "FOR RESEARCH USE ONLY. NOT FOR USE IN DIAGNOSTIC PROCEDURES"

Our Abpromise to you: Quality guaranteed and expert technical support

- Replacement or refund for products not performing as stated on the datasheet
- Valid for 12 months from date of delivery
- Response to your inquiry within 24 hours
- We provide support in Chinese, English, French, German, Japanese and Spanish
- Extensive multi-media technical resources to help you
- We investigate all quality concerns to ensure our products perform to the highest standards

If the product does not perform as described on this datasheet, we will offer a refund or replacement. For full details of the Abpromise, please visit <https://www.abcam.com/abpromise> or contact our technical team.

Terms and conditions

- Guarantee only valid for products bought direct from Abcam or one of our authorized distributors