


Product datasheet

Anti-eIF5A2 + eIF5A antibody [EPR7411-6] ab126735

Recombinant RabMAb

[5 References](#) [6 Images](#)

Overview

Product name	Anti-eIF5A2 + eIF5A antibody [EPR7411-6]
Description	Rabbit monoclonal [EPR7411-6] to eIF5A2 + eIF5A
Host species	Rabbit
Tested applications	Suitable for: Flow Cyt (Intra), WB, IHC-P
Species reactivity	Reacts with: Human Predicted to work with: Mouse, Rat 
Immunogen	Synthetic peptide. This information is proprietary to Abcam and/or its suppliers.
Positive control	WB: 293T, HeLa, A431, Caco 2 and HepG2 whole cell lysate (ab7900); IHC-P: Human ovarian carcinoma tissue; Flow Cyt (intra): HeLa cells.
General notes	<p>This product was previously published with the name Anti-eIF5A2 antibody [EPR7411-6]. Following in-house testing that showed reactivity to both recombinant Human eIF5A protein (ab87457) and recombinant Human eIF5A2 protein (ab99140), the name was updated in January 2021 to Anti-eIF5A2 + eIF5A antibody [EPR7411-6].</p> <p>This product is a recombinant monoclonal antibody, which offers several advantages including:</p> <ul style="list-style-type: none"> - High batch-to-batch consistency and reproducibility - Improved sensitivity and specificity - Long-term security of supply - Animal-free production <p>For more information see here.</p> <p>Our RabMAb[®] technology is a patented hybridoma-based technology for making rabbit monoclonal antibodies. For details on our patents, please refer to RabMAb[®] patents.</p>

Properties

Form	Liquid
Storage instructions	Shipped at 4°C. Store at -20°C. Stable for 12 months at -20°C.
Dissociation constant (K _D)	K _D = 5.50 x 10 ⁻¹¹ M





[Learn more about K_D](#)

Storage buffer	pH: 7.20 Preservative: 0.01% Sodium azide Constituents: 9% PBS, 40% Glycerol (glycerin, glycerine), 0.05% BSA, 50% Tissue culture supernatant
Purity	Protein A purified
Clonality	Monoclonal
Clone number	EPR7411-6
Isotype	IgG

Applications

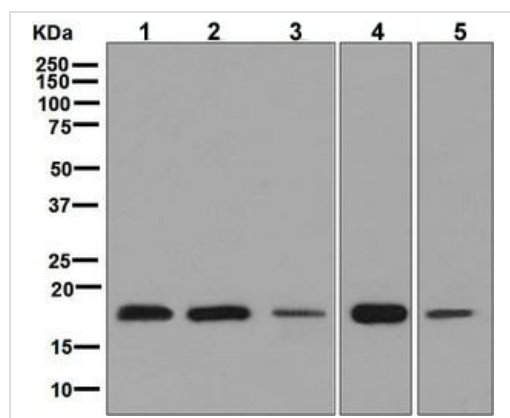
The Abpromise guarantee Our [Abpromise guarantee](#) covers the use of ab126735 in the following tested applications. The application notes include recommended starting dilutions; optimal dilutions/concentrations should be determined by the end user.

Application	Abreviews	Notes
Flow Cyt (Intra)		1/10 - 1/100. ab172730 - Rabbit monoclonal IgG, is suitable for use as an isotype control with this antibody.
WB		1/1000 - 1/10000. Detects a band of approximately 17 kDa (predicted molecular weight: 17 kDa).
IHC-P		1/100 - 1/250. Perform heat mediated antigen retrieval with citrate buffer pH 6 before commencing with IHC staining protocol.

Target

Cellular localization	eIF5A2: Cytoplasm. Nucleus. Endoplasmic reticulum membrane. Nucleus > nuclear pore complex. Hypusine modification promotes the nuclear export and cytoplasmic localization and there was a dynamic shift in the localization from predominantly cytoplasmic to primarily nuclear under apoptotic inducing conditions. eIF5A: Cytoplasm. Nucleus. Endoplasmic reticulum membrane. Nucleus > nuclear pore complex. Hypusine modification promotes the nuclear export and cytoplasmic localization and there was a dynamic shift in the localization from predominantly cytoplasmic to primarily nuclear under apoptotic inducing conditions.
------------------------------	--

Images



Western blot - Anti-eIF5A2 + eIF5A antibody
[EPR7411-6] (ab126735)

All lanes : Anti-eIF5A2 + eIF5A antibody [EPR7411-6] (ab126735)
at 1/1000 dilution

Lane 1 : 293T cell lysate

Lane 2 : HeLa cell lysate

Lane 3 : A431 cell lysate

Lane 4 : CaCo-2 cell lysate

Lane 5 : HepG2 cell lysate

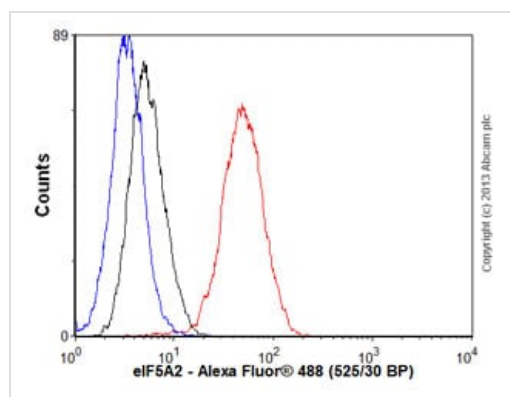
Lysates/proteins at 10 µg per lane.

Secondary

All lanes : Goat anti-rabbit HRP conjugated at 1/2000 dilution

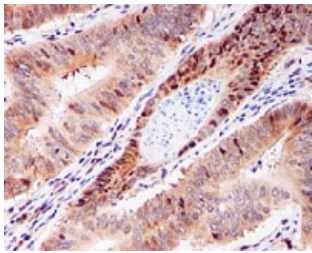
Developed using the ECL technique.

Predicted band size: 17 kDa



Flow Cytometry (Intracellular) - Anti-eIF5A2 + eIF5A
antibody [EPR7411-6] (ab126735)

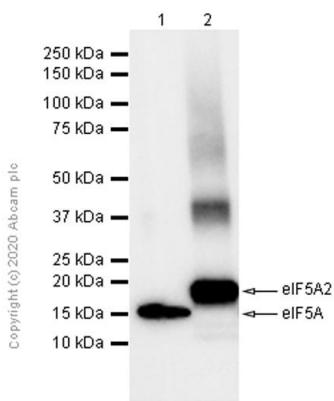
Overlay histogram showing HeLa cells stained with ab126735 (red line). The cells were fixed with 80% methanol (5 min) and then permeabilized with 0.1% PBS-Tween for 20 min. The cells were then incubated in 1x PBS / 10% normal goat serum / 0.3M glycine to block non-specific protein-protein interactions followed by the antibody (ab126735, 1/100 dilution) for 30 min at 22°C. The secondary antibody used was Alexa Fluor® 488 goat anti-rabbit IgG (H+L) (**ab150077**) at 1/2000 dilution for 30 min at 22°C. Isotype control antibody (black line) was rabbit IgG (monoclonal) (1µg/1x10⁶ cells) used under the same conditions. Unlabelled sample (blue line) was also used as a control. Acquisition of >5,000 events were collected using a 20mW Argon ion laser (488nm) and 525/30 bandpass filter.



Immunohistochemistry (Formalin/PFA-fixed paraffin-embedded sections) - Anti-eIF5A2 + eIF5A antibody [EPR7411-6] (ab126735)

ab126735 at 1/100 dilution, labeling eIF5A2 + eIF5A in Formalin fixed Paraffin-embedded Human ovarian carcinoma tissue by Immunohistochemistry.

Perform heat mediated antigen retrieval with citrate buffer pH 6 before commencing with IHC staining protocol.



Western blot - Anti-eIF5A2 + eIF5A antibody [EPR7411-6] (ab126735)

All lanes : Anti-eIF5A2 + eIF5A antibody [EPR7411-6] (ab126735) at 1/2000 dilution

Lane 1 : Recombinant Human eIF5A protein ([ab87457](#))

Lane 2 : Recombinant Human eIF5A2 protein ([ab99140](#))

Lysates/proteins at 0.01 µg per lane.

Secondary

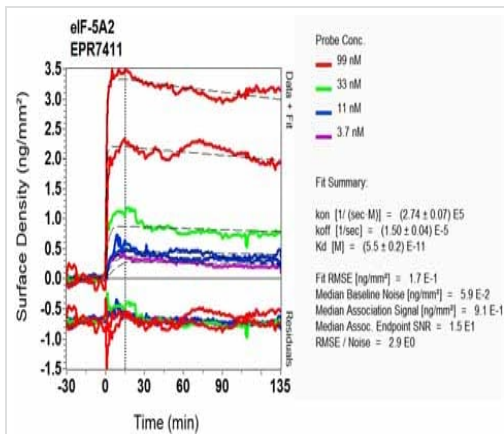
All lanes : Goat Anti-Rabbit IgG H&L (HRP) ([ab97051](#)) at 1/20000 dilution

Predicted band size: 17 kDa

Observed band size: 15,20 kDa

Exposure time: 20 seconds

Blocking buffer: 5% NFDM/TBST



OI-RD Scanning - Anti-eIF5A2 + eIF5A antibody
 [EPR7411-6] (ab126735)

Equilibrium disassociation constant (K_D)

Learn more about K_D

[Click here to learn more about \$K_D\$](#)

Why choose a recombinant antibody?



Research with confidence
 Consistent and reproducible results



Long-term and scalable supply
 Recombinant technology



Success from the first experiment
 Confirmed specificity



Ethical standards compliant
 Animal-free production

Anti-eIF5A2 + eIF5A antibody [EPR7411-6]
 (ab126735)

Please note: All products are "FOR RESEARCH USE ONLY. NOT FOR USE IN DIAGNOSTIC PROCEDURES"

Our Abpromise to you: Quality guaranteed and expert technical support

- Replacement or refund for products not performing as stated on the datasheet
- Valid for 12 months from date of delivery
- Response to your inquiry within 24 hours

- We provide support in Chinese, English, French, German, Japanese and Spanish
- Extensive multi-media technical resources to help you
- We investigate all quality concerns to ensure our products perform to the highest standards

If the product does not perform as described on this datasheet, we will offer a refund or replacement. For full details of the Abpromise, please visit <https://www.abcam.com/abpromise> or contact our technical team.

Terms and conditions

- Guarantee only valid for products bought direct from Abcam or one of our authorized distributors