



Product datasheet

Anti-Elafin/ESI antibody ab192345

2 Images

Overview

Product name	Anti-Elafin/ESI antibody
Description	Rabbit polyclonal to Elafin/ESI
Host species	Rabbit
Tested applications	Suitable for: WB, IHC-P
Species reactivity	Reacts with: Human
Immunogen	Recombinant full length protein corresponding to Human Elafin/ESI aa 1 to the C-terminus. Database link: P19957
	 Run BLAST with  Run BLAST with
Positive control	WB: U-87 MG and HepG2 cell lysates. IHC-P: Human colon tissue.
General notes	<p>The Life Science industry has been in the grips of a reproducibility crisis for a number of years. Abcam is leading the way in addressing this with our range of recombinant monoclonal antibodies and knockout edited cell lines for gold-standard validation. Please check that this product meets your needs before purchasing.</p> <p>If you have any questions, special requirements or concerns, please send us an inquiry and/or contact our Support team ahead of purchase. Recommended alternatives for this product can be found below, along with publications, customer reviews and Q&As</p>

Properties

Form	Liquid
Storage instructions	Shipped at 4°C. Store at +4°C short term (1-2 weeks). Upon delivery aliquot. Store at -20°C long term. Avoid freeze / thaw cycle.
Storage buffer	Preservative: 0.1% Sodium azide Constituents: 49% PBS, 50% Glycerol
Purity	Immunogen affinity purified
Purification notes	Purity is > 95% (by SDS-PAGE).
Clonality	Polyclonal
Isotype	IgG

Applications

The Abpromise guarantee

Our **Abpromise guarantee** covers the use of ab192345 in the following tested applications.

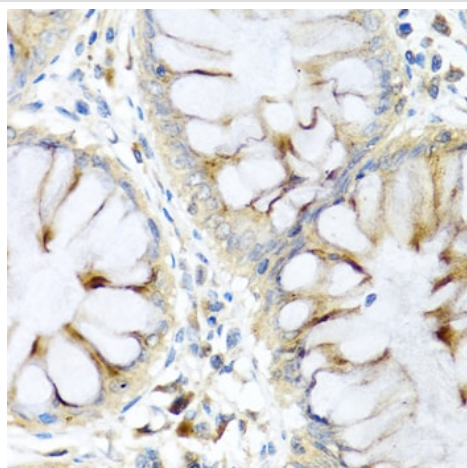
The application notes include recommended starting dilutions; optimal dilutions/concentrations should be determined by the end user.

Application	Abreviews	Notes
WB		Use at an assay dependent concentration. Predicted molecular weight: 12 kDa.
IHC-P		1/50 - 1/200.

Target

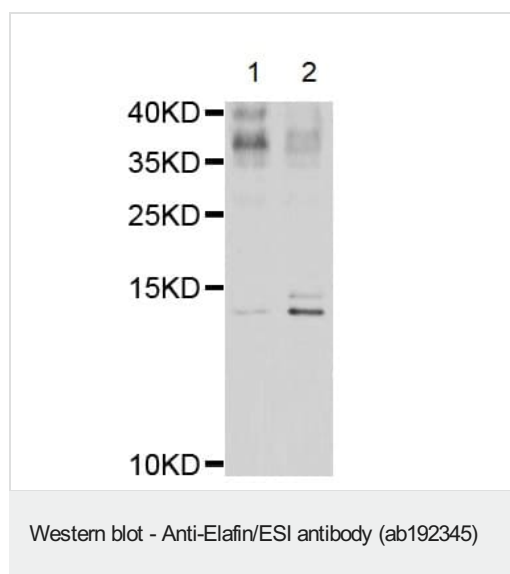
Function	Neutrophil and pancreatic elastase-specific inhibitor of skin. It may prevent elastase-mediated tissue proteolysis.
Sequence similarities	Contains 1 WAP domain.
Domain	Consists of two domains: the transglutaminase substrate domain (cementin moiety) and the elastase inhibitor domain. The transglutaminase substrate domain serves as an anchor to localize elafin covalently to specific sites on extracellular matrix proteins.
Cellular localization	Secreted.

Images



Immunohistochemistry (Formalin/PFA-fixed paraffin-embedded sections) analysis of human colon tissue labelling Elafin/ESI with ab192345 at 1/200 dilution.

Immunohistochemistry (Formalin/PFA-fixed paraffin-embedded sections) - Anti-Elafin/ESI antibody (ab192345)



All lanes : Anti-Elafin/ESI antibody (ab192345)

Lane 1 : U-87 MG (Human glioblastoma-astrocytoma epithelial cell line) whole cell lysate

Lane 2 : HepG2 (Human liver hepatocellular carcinoma cell line) whole cell lysate

Predicted band size: 12 kDa

Please note: All products are "FOR RESEARCH USE ONLY. NOT FOR USE IN DIAGNOSTIC PROCEDURES"

Our Abpromise to you: Quality guaranteed and expert technical support

- Replacement or refund for products not performing as stated on the datasheet
- Valid for 12 months from date of delivery
- Response to your inquiry within 24 hours
- We provide support in Chinese, English, French, German, Japanese and Spanish
- Extensive multi-media technical resources to help you
- We investigate all quality concerns to ensure our products perform to the highest standards

If the product does not perform as described on this datasheet, we will offer a refund or replacement. For full details of the Abpromise, please visit <https://www.abcam.com/abpromise> or contact our technical team.

Terms and conditions

- Guarantee only valid for products bought direct from Abcam or one of our authorized distributors