

Product datasheet

Anti-Elastase-1 antibody ab231117

[1 References](#) [3 Images](#)

Overview

Product name	Anti-Elastase-1 antibody
Description	Rabbit polyclonal to Elastase-1
Host species	Rabbit
Tested applications	Suitable for: IHC-P, WB
Species reactivity	Reacts with: Mouse
Immunogen	Recombinant fragment (His-tag) corresponding to Mouse Elastase-1 aa 1-300 (N terminal). (Expressed in E.coli). Database link: Q91X79

 [Run BLAST with](#)

 [Run BLAST with](#)

Positive control WB: Recombinant mouse Elastase-1 protein, Mouse serum. ICH-P: Mouse testis tissue.

General notes

The Life Science industry has been in the grips of a reproducibility crisis for a number of years. Abcam is leading the way in addressing this with our range of recombinant monoclonal antibodies and knockout edited cell lines for gold-standard validation. Please check that this product meets your needs before purchasing.

If you have any questions, special requirements or concerns, please send us an inquiry and/or contact our Support team ahead of purchase. Recommended alternatives for this product can be found below, along with publications, customer reviews and Q&As

Properties

Form	Liquid
Storage instructions	Shipped at 4°C. Store at +4°C short term (1-2 weeks). Upon delivery aliquot. Store at -20°C long term. Avoid freeze / thaw cycle.
Storage buffer	pH: 7.40 Preservative: 0.011% Proclin 300 Constituents: 55.77% Glycerol (glycerin, glycerine), 44.219% PBS
Purity	Immunogen affinity purified
Clonality	Polyclonal
Isotype	IgG

Applications

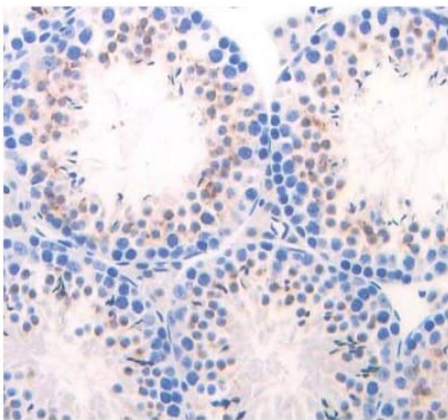
The Abpromise guarantee Our **Abpromise guarantee** covers the use of ab231117 in the following tested applications. The application notes include recommended starting dilutions; optimal dilutions/concentrations should be determined by the end user.

Application	Abreviews	Notes
IHC-P		Use a concentration of 5 - 20 µg/ml.
WB		Use a concentration of 0.5 - 2 µg/ml. Predicted molecular weight: 29 kDa.

Target

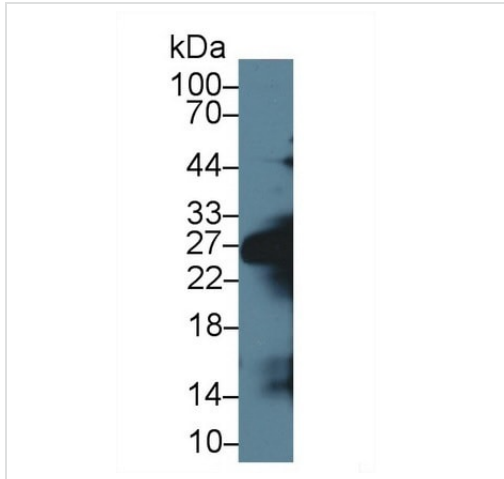
Function	Acts upon elastin.
Tissue specificity	Skin; not expressed in pancreas.
Sequence similarities	Belongs to the peptidase S1 family. Elastase subfamily. Contains 1 peptidase S1 domain.
Cellular localization	Secreted.

Images



DAB stained, formalin-fixed, paraffin-embedded mouse testis tissue stained for Elastase-1 using ab231117 at 20 µg/mL in immunohistochemical analysis.

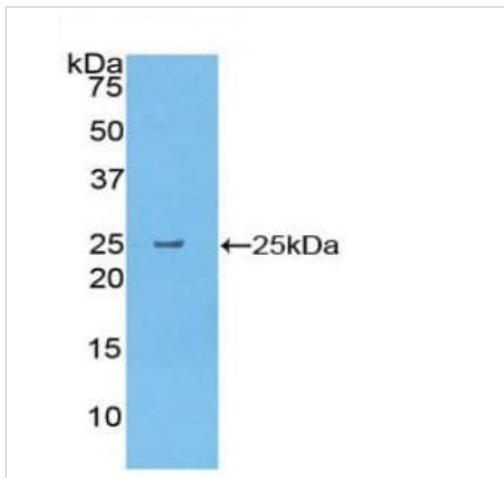
Immunohistochemistry (Formalin/PFA-fixed paraffin-embedded sections) - Anti-Elastase-1 antibody (ab231117)



Anti-Elastase-1 antibody (ab231117) at 1 µg/ml + Mouse serum

Predicted band size: 29 kDa

Western blot - Anti-Elastase-1 antibody (ab231117)



Anti-Elastase-1 antibody (ab231117) at 1 µg/ml + Recombinant mouse Elastase-1 protein.

Predicted band size: 29 kDa

Western blot - Anti-Elastase-1 antibody (ab231117)

Please note: All products are "FOR RESEARCH USE ONLY. NOT FOR USE IN DIAGNOSTIC PROCEDURES"

Our Abpromise to you: Quality guaranteed and expert technical support

- Replacement or refund for products not performing as stated on the datasheet
- Valid for 12 months from date of delivery
- Response to your inquiry within 24 hours
- We provide support in Chinese, English, French, German, Japanese and Spanish
- Extensive multi-media technical resources to help you

- We investigate all quality concerns to ensure our products perform to the highest standards

If the product does not perform as described on this datasheet, we will offer a refund or replacement. For full details of the Abpromise, please visit <https://www.abcam.com/abpromise> or contact our technical team.

Terms and conditions

- Guarantee only valid for products bought direct from Abcam or one of our authorized distributors