


### Anti-ELF1 antibody ab229563

1 Image

#### Overview

<b>Product name</b>	Anti-ELF1 antibody
<b>Description</b>	Rabbit polyclonal to ELF1
<b>Host species</b>	Rabbit
<b>Tested applications</b>	<b>Suitable for:</b> WB
<b>Species reactivity</b>	<b>Reacts with:</b> Human <b>Predicted to work with:</b> Rhesus monkey 
<b>Immunogen</b>	Recombinant fragment within Human ELF1 (internal sequence). The exact sequence is proprietary. Database link: <a href="#">P32519</a>
<b>Positive control</b>	WB: HeLa and HepG2 whole cell extracts.
<b>General notes</b>	<p>The Life Science industry has been in the grips of a reproducibility crisis for a number of years. Abcam is leading the way in addressing this with our range of recombinant monoclonal antibodies and knockout edited cell lines for gold-standard validation. Please check that this product meets your needs before purchasing.</p> <p>If you have any questions, special requirements or concerns, please send us an inquiry and/or contact our Support team ahead of purchase. Recommended alternatives for this product can be found below, along with publications, customer reviews and Q&amp;As</p>

#### Properties

<b>Form</b>	Liquid
<b>Storage instructions</b>	Shipped at 4°C. Store at +4°C short term (1-2 weeks). Upon delivery aliquot. Store at -20°C long term. Avoid freeze / thaw cycle.
<b>Storage buffer</b>	pH: 7.00 Preservative: 0.025% Proclin 300 Constituents: 79% PBS, 20% Glycerol (glycerin, glycerine)
<b>Purity</b>	Immunogen affinity purified
<b>Clonality</b>	Polyclonal
<b>Isotype</b>	IgG

## Applications

### The Abpromise guarantee

Our **Abpromise guarantee** covers the use of ab229563 in the following tested applications.

The application notes include recommended starting dilutions; optimal dilutions/concentrations should be determined by the end user.

Application	Abreviews	Notes
WB		1/500 - 1/3000. Predicted molecular weight: 67 kDa.

## Target

### Function

Transcription factor that activates the LYN and BLK promoters. Appears to be required for the T-cell-receptor-mediated trans activation of HIV-2 gene expression. Binds specifically to two purine-rich motifs in the HIV-2 enhancer.

### Tissue specificity

In fetal tissues, it is highly expressed in heart, lung liver and kidney, and weakly expressed in brain. In adult, it is highly expressed in pancreas, spleen, thymus and peripheral blood leukocytes, expressed at moderate levels in heart, placenta, lung, liver, skeletal muscle, kidney, prostate, ovary, small intestine and colon, and weakly expressed in brain and testis.

### Sequence similarities

Belongs to the ETS family.  
Contains 1 ETS DNA-binding domain.

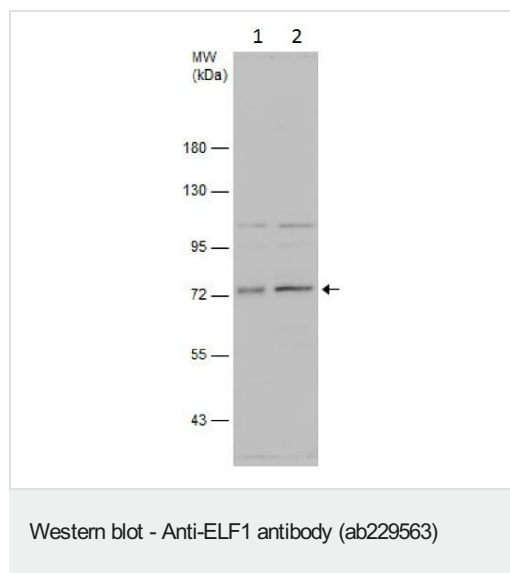
### Post-translational modifications

Phosphorylated upon DNA damage, probably by ATM or ATR.

### Cellular localization

Nucleus.

## Images



**All lanes :** Anti-ELF1 antibody (ab229563) at 1/500 dilution

**Lane 1 :** HeLa (Human epithelial cell line from cervix adenocarcinoma) whole cell extracts

**Lane 2 :** HepG2 (Human liver hepatocellular carcinoma cell line) whole cell extracts

Lysates/proteins at 30 µg per lane.

Developed using the ECL technique.

**Predicted band size:** 67 kDa

7.5% SDS-PAGE

**Please note:** All products are "FOR RESEARCH USE ONLY. NOT FOR USE IN DIAGNOSTIC PROCEDURES"

### **Our Abpromise to you: Quality guaranteed and expert technical support**

---

- Replacement or refund for products not performing as stated on the datasheet
- Valid for 12 months from date of delivery
- Response to your inquiry within 24 hours
  
- We provide support in Chinese, English, French, German, Japanese and Spanish
- Extensive multi-media technical resources to help you
- We investigate all quality concerns to ensure our products perform to the highest standards

If the product does not perform as described on this datasheet, we will offer a refund or replacement. For full details of the Abpromise, please visit <https://www.abcam.com/abpromise> or contact our technical team.

### **Terms and conditions**

---

- Guarantee only valid for products bought direct from Abcam or one of our authorized distributors