

Anti-ELK4 antibody ab86002

[1 References](#) [1 Image](#)

Overview

Product name	Anti-ELK4 antibody
Description	Rabbit polyclonal to ELK4
Host species	Rabbit
Tested applications	Suitable for: WB
Species reactivity	Reacts with: Recombinant fragment
Immunogen	Three synthetic peptides derived from human ELK4, conjugated to KLH.
General notes	<p>The Life Science industry has been in the grips of a reproducibility crisis for a number of years. Abcam is leading the way in addressing this with our range of recombinant monoclonal antibodies and knockout edited cell lines for gold-standard validation. Please check that this product meets your needs before purchasing.</p> <p>If you have any questions, special requirements or concerns, please send us an inquiry and/or contact our Support team ahead of purchase. Recommended alternatives for this product can be found below, along with publications, customer reviews and Q&As</p>

Properties

Form	Liquid
Storage instructions	Shipped at 4°C. Upon delivery aliquot and store at -20°C or -80°C. Avoid repeated freeze / thaw cycles.
Storage buffer	Preservative: 0.01% Thimerosal (merthiolate)
Purity	Whole antiserum
Purification notes	Crude serum, final bleed
Clonality	Polyclonal
Isotype	IgG

Applications

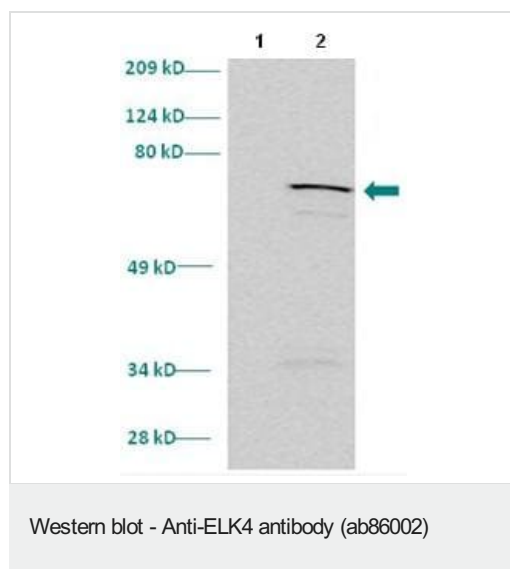
The Abpromise guarantee Our **Abpromise guarantee** covers the use of ab86002 in the following tested applications. The application notes include recommended starting dilutions; optimal dilutions/concentrations should be determined by the end user.

Application	Abreviews	Notes
WB		1/1000. Predicted molecular weight: 47 kDa.

Target

Function	Forms a ternary complex with the serum response factor (SRF). Requires DNA-bound SRF for ternary complex formation and makes extensive DNA contacts to the 5' side of SRF, but does not bind DNA autonomously.
Sequence similarities	Belongs to the ETS family. Contains 1 ETS DNA-binding domain.
Cellular localization	Nucleus.

Images



All lanes : Anti-ELK4 antibody (ab86002) at 1/1000 dilution (in 5% non-fat milk-PBST solution incubated for 60 minutes)

Lane 1 : uninduced culture of *E. coli* (plus anti thio at 1/5000 dilution)

Lane 2 : induced culture of *E. coli* (plus anti thio at 1/5000 dilution)

Secondary

All lanes : anti-Rabbit IgG HRP conjugated incubated for 60 minutes at 1/1000 dilution

Predicted band size: 47 kDa

Observed band size: 61 kDa

Gel concentration: 10%

The actual band molecular weight is the result of the target protein ELK4 (47 kDa) attached to a tag (14 kDa).

Please note: All products are "FOR RESEARCH USE ONLY. NOT FOR USE IN DIAGNOSTIC PROCEDURES"

Our Abpromise to you: Quality guaranteed and expert technical support

- Replacement or refund for products not performing as stated on the datasheet

- Valid for 12 months from date of delivery
- Response to your inquiry within 24 hours
- We provide support in Chinese, English, French, German, Japanese and Spanish
- Extensive multi-media technical resources to help you
- We investigate all quality concerns to ensure our products perform to the highest standards

If the product does not perform as described on this datasheet, we will offer a refund or replacement. For full details of the Abpromise, please visit <https://www.abcam.com/abpromise> or contact our technical team.

Terms and conditions

- Guarantee only valid for products bought direct from Abcam or one of our authorized distributors