






### Anti-ELMO2 antibody ab2240

[7 References](#) [5 Images](#)

#### Overview

<b>Product name</b>	Anti-ELMO2 antibody
<b>Description</b>	Goat polyclonal to ELMO2
<b>Host species</b>	Goat
<b>Tested applications</b>	<b>Suitable for:</b> IHC-P, WB, Flow Cyt, ICC/IF
<b>Species reactivity</b>	<b>Reacts with:</b> Mouse, Rat, Human <b>Predicted to work with:</b> Cow, Dog, Pig 
<b>Immunogen</b>	Synthetic peptide: PKEPSSYDFVYHYG, corresponding to C terminal amino acids 707-720 of Human ELMO2. <a href="#"> Run BLAST with </a> <a href="#"> Run BLAST with </a>
<b>Positive control</b>	Flow Cyt: A549 cells ICC/IF: U2OS and A549 cells WB: Jurkat, HEK293, RAW264.7 and KNRK cell lysate; Human cerebellum and rat brain tissue lysate
<b>General notes</b>	<p>The Life Science industry has been in the grips of a reproducibility crisis for a number of years. Abcam is leading the way in addressing this with our range of recombinant monoclonal antibodies and knockout edited cell lines for gold-standard validation. Please check that this product meets your needs before purchasing.</p> <p>If you have any questions, special requirements or concerns, please send us an inquiry and/or contact our Support team ahead of purchase. Recommended alternatives for this product can be found below, along with publications, customer reviews and Q&amp;As</p>

#### Properties

<b>Form</b>	Liquid
<b>Storage instructions</b>	Shipped at 4°C. Upon delivery aliquot and store at -20°C or -80°C. Avoid repeated freeze / thaw cycles.
<b>Storage buffer</b>	pH: 7.30 Preservative: 0.02% Sodium azide Constituents: 0.05% Tris, 0.5% BSA
<b>Purity</b>	Immunogen affinity purified
<b>Purification notes</b>	Purified from goat serum by ammonium sulphate precipitation followed by antigen affinity chromatography using the immunizing peptide.
<b>Clonality</b>	Polyclonal

Isotype

IgG

## Applications

### The Abpromise guarantee

Our **Abpromise guarantee** covers the use of ab2240 in the following tested applications.

The application notes include recommended starting dilutions; optimal dilutions/concentrations should be determined by the end user.

Application	Abreviews	Notes
IHC-P		Use a concentration of 3 - 6 µg/ml. Perform heat mediated antigen retrieval with citrate buffer pH 6 before commencing with IHC staining protocol.
WB		Use a concentration of 1 - 3 µg/ml. 1 hour primary incubation is recommended for this product.
Flow Cyt		Use a concentration of 10 µg/ml.
ICC/IF		Use a concentration of 10 µg/ml.

## Target

### Function

Involved in cytoskeletal rearrangements required for phagocytosis of apoptotic cells and cell motility. Acts in association with DOCK1 and CRK. Was initially proposed to be required in complex with DOCK1 to activate Rac Rho small GTPases. May enhance the guanine nucleotide exchange factor (GEF) activity of DOCK1.

### Tissue specificity

Widely expressed, with a higher expression in skeletal muscle, kidney and placenta.

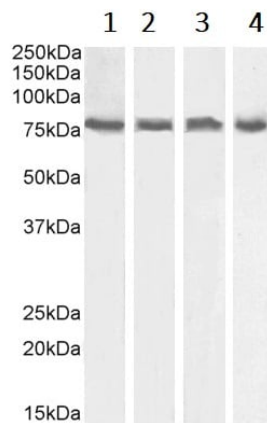
### Sequence similarities

Contains 1 ELMO domain.  
Contains 1 PH domain.

### Cellular localization

Cytoplasm. Cytoplasm > cytosol. Membrane.

## Images



Western blot - Anti-ELMO2 antibody (ab2240)

**All lanes :** Anti-ELMO2 antibody (ab2240) at 0.5 µg/ml

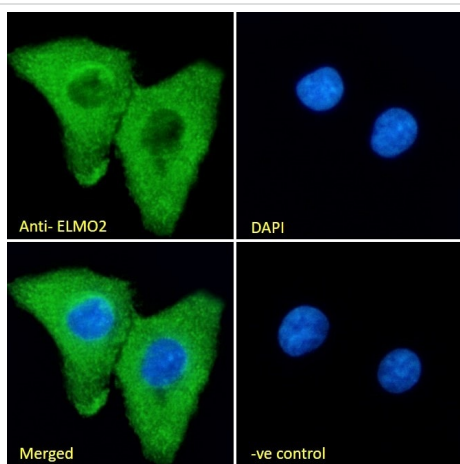
**Lane 1 :** Jurkat cell lysate

**Lane 2 :** HEK293 cell lysate

**Lane 3 :** RAW264.7 cell lysate

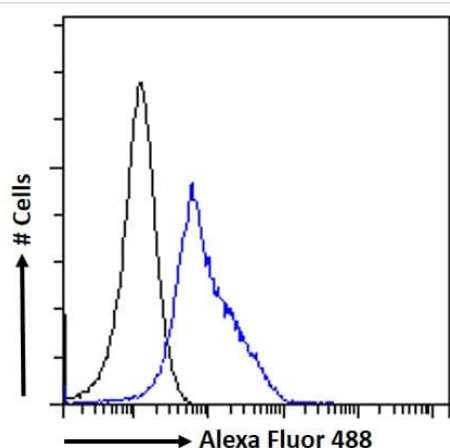
**Lane 4 :** KNRK cell lysate

Detected by chemiluminescence.



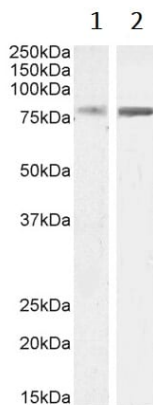
Immunocytochemistry/ Immunofluorescence - Anti-ELMO2 antibody (ab2240)

Immunocytochemistry/Immunofluorescence analysis of paraformaldehyde fixed A549 cells, permeabilized with 0.15% Triton. Primary incubation 1hr (10µg/mL) followed by Alexa Fluor 488 secondary antibody (2µg/mL), showing cytoplasmic staining. The nuclear stain is DAPI (blue). Negative control: Unimmunized goat IgG (10µg/mL) followed by Alexa Fluor 488 secondary antibody (2µg/mL).



Flow Cytometry - Anti-ELMO2 antibody (ab2240)

Flow cytometric analysis of paraformaldehyde fixed A549 cells (blue line), permeabilized with 0.5% Triton. Primary incubation 1hr (10µg/mL) followed by Alexa Fluor 488 secondary antibody (1µg/mL). IgG control: Unimmunized goat IgG (black line) followed by Alexa Fluor 488 secondary antibody.



Western blot - Anti-ELMO2 antibody (ab2240)

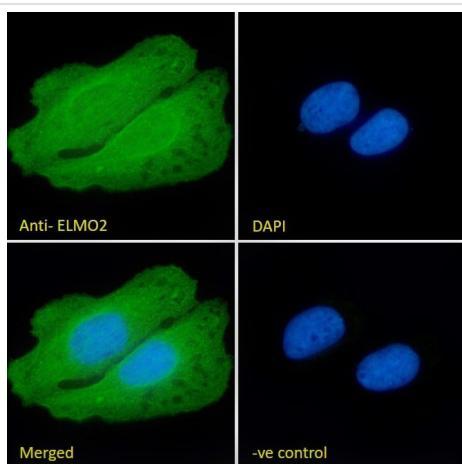
**All lanes :** Anti-ELMO2 antibody (ab2240) at 0.5 µg/ml

**Lane 1 :** Human cerebellum tissue lysate

**Lane 2 :** Rat brain tissue lysate

Lysates/proteins at 35 µg per lane.

Detected by chemiluminescence.



Immunocytochemistry/ Immunofluorescence - Anti-ELMO2 antibody (ab2240)

Immunocytochemistry/Immunofluorescence analysis of paraformaldehyde fixed U2OS cells, permeabilized with 0.15% Triton. Primary incubation 1hr (10µg/mL) followed by Alexa Fluor 488 secondary antibody (2µg/mL), showing cytoplasmic and nuclear staining. The nuclear stain is DAPI (blue). Negative control: Unimmunized goat IgG (10µg/mL) followed by Alexa Fluor 488 secondary antibody (2µg/mL).

**Please note:** All products are "FOR RESEARCH USE ONLY. NOT FOR USE IN DIAGNOSTIC PROCEDURES"

### Our Abpromise to you: Quality guaranteed and expert technical support

- Replacement or refund for products not performing as stated on the datasheet
- Valid for 12 months from date of delivery
- Response to your inquiry within 24 hours
- We provide support in Chinese, English, French, German, Japanese and Spanish
- Extensive multi-media technical resources to help you
- We investigate all quality concerns to ensure our products perform to the highest standards

If the product does not perform as described on this datasheet, we will offer a refund or replacement. For full details of the Abpromise, please visit <https://www.abcam.com/abpromise> or contact our technical team.

## Terms and conditions

---

- Guarantee only valid for products bought direct from Abcam or one of our authorized distributors