

Anti-ELOVL5 antibody [EPR17151] - BSA and Azide free ab240371

Recombinant RabMAb

5 Images

Overview

Product name	Anti-ELOVL5 antibody [EPR17151] - BSA and Azide free
Description	Rabbit monoclonal [EPR17151] to ELOVL5 - BSA and Azide free
Host species	Rabbit
Specificity	<p>When testing sample with low protein level, we recommend uploading more amount of lysate, using lower antibody dilution, and using higher sensitivity ECL substrate.</p> <p>We also recommend trying 1%SDS Hot lysis prepare method to get desired Western Blot results.</p>
Tested applications	Suitable for: WB, Flow Cyt (Intra), ICC/IF
Species reactivity	Reacts with: Mouse, Rat, Human
Immunogen	Synthetic peptide. This information is proprietary to Abcam and/or its suppliers.
Positive control	WB: MCF7 (RIPA lysis and 1%SDS Hot lysis) , HeLa (RIPA lysis and 1%SDS Hot lysis), HepG2 (RIPA lysis method), C6 and RAW 264.7 whole cell lysates; Human fetal brain, fetal heart and fetal kidney lysates; Human testis lysate; Mouse brain, heart, kidney and spleen lysates; Rat brain, heart, kidney and spleen lysates. ICC/IF: HeLa and HepG2 cells.
General notes	<p>ab240371 is the carrier-free version of ab205535.</p> <p>Our carrier-free antibodies are typically supplied in a PBS-only formulation, purified and free of BSA, sodium azide and glycerol. The carrier-free buffer and high concentration allow for increased conjugation efficiency.</p> <p>This conjugation-ready format is designed for use with fluorochromes, metal isotopes, oligonucleotides, and enzymes, which makes them ideal for antibody labelling, functional and cell-based assays, flow-based assays (e.g. mass cytometry) and Multiplex Imaging applications.</p> <p>Use our conjugation kits for antibody conjugates that are ready-to-use in as little as 20 minutes with <1 minute hands-on-time and 100% antibody recovery: available for fluorescent dyes, HRP, biotin and gold.</p> <p>This product is compatible with the Maxpar[®] Antibody Labeling Kit from Fluidigm, without the need for antibody preparation. Maxpar[®] is a trademark of Fluidigm Canada Inc.</p> <p>This product is a recombinant monoclonal antibody, which offers several advantages including:</p> <ul style="list-style-type: none"> - High batch-to-batch consistency and reproducibility - Improved sensitivity and specificity

- Long-term security of supply
 - Animal-free production
- For more information [see here](#).

Our RabMAb[®] technology is a patented hybridoma-based technology for making rabbit monoclonal antibodies. For details on our patents, please refer to [RabMAb[®] patents](#).

Properties

Form	Liquid
Storage instructions	Shipped at 4°C. Store at +4°C. Do Not Freeze.
Storage buffer	pH: 7.2 Constituent: PBS
Carrier free	Yes
Purity	Protein A purified
Clonality	Monoclonal
Clone number	EPR17151
Isotype	IgG

Applications

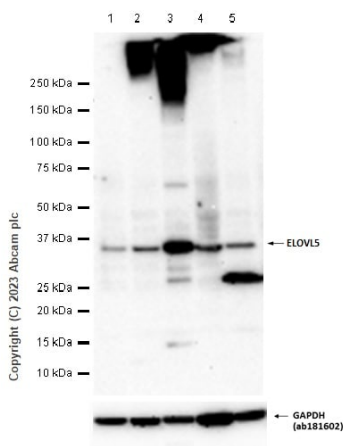
The Abpromise guarantee Our **Abpromise guarantee** covers the use of ab240371 in the following tested applications. The application notes include recommended starting dilutions; optimal dilutions/concentrations should be determined by the end user.

Application	Abreviews	Notes
WB		Use at an assay dependent concentration. Detects a band of approximately 35 kDa (predicted molecular weight: 35 kDa).
Flow Cyt (Intra)		Use at an assay dependent concentration.
ICC/IF		Use at an assay dependent concentration.

Target

Function	Condensing enzyme that catalyzes the synthesis of monounsaturated and of polyunsaturated very long chain fatty acids Acts specifically toward polyunsaturated acyl-CoA with the higher activity toward C18:3(n-6) acyl-CoA.
Tissue specificity	Ubiquitous. Highly expressed in the adrenal gland and testis. Weekly expressed in prostate, lung and brain.
Sequence similarities	Belongs to the ELO family.
Cellular localization	Endoplasmic reticulum membrane.

Images



Western blot - Anti-ELOVL5 antibody [EPR17151] - BSA and Azide free (ab240371)

All lanes : Anti-ELOVL5 antibody [EPR17151] ([ab205535](#)) at 1/1000 dilution

Lane 1 : HepG2 (Human hepatocellular carcinoma epithelial cell) whole cell lysate prepared in RIPA lysis method

Lane 2 : MCF7 (Human breast adenocarcinoma epithelial cell) whole cell lysate prepared in RIPA lysis method

Lane 3 : MCF7 (Human breast adenocarcinoma epithelial cell) whole cell lysate prepared in 1%SDS Hot lysis method

Lane 4 : HeLa (Human cervix adenocarcinoma epithelial cell) whole cell lysate prepared in RIPA lysis method

Lane 5 : HeLa (Human cervix adenocarcinoma epithelial cell) whole cell lysate prepared in 1%SDS Hot lysis method

Lysates/proteins at 20 µg per lane.

Secondary

All lanes : Goat Anti-Rabbit IgG H&L (HRP) ([ab97051](#)) at 1/20000 dilution

Predicted band size: 35 kDa

Observed band size: 35 kDa

Exposure time: 180 seconds

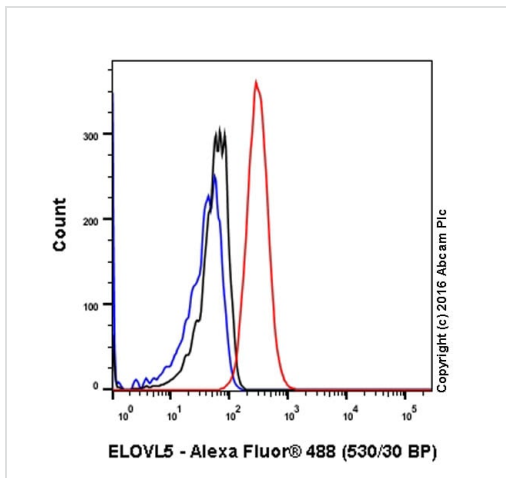
Blocking buffer and concentration: 5% NFDM/TBST.

Diluting buffer and concentration: 5% NFDM/TBST.

When testing sample with low protein level, we recommend uploading more amount of lysate, using lower antibody dilution, and using higher sensitivity ECL substrate.

We also recommend trying 1%SDS Hot lysis prepare method to get desired Western Blot results.

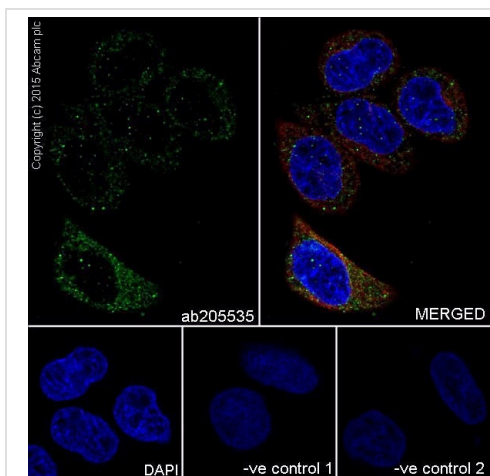
This data was developed using the same antibody clone in a different buffer formulation containing PBS, BSA, glycerol, and sodium azide ([ab205535](#)).



Flow Cytometry (Intracellular) - Anti-ELOVL5 antibody [EPR17151] - BSA and Azide free (ab240371)

Intracellular Flow Cytometry analysis of HeLa cells labelling ELOVL5 with **ab205535** at 1/20 (red). Cells were fixed with 4% paraformaldehyde and permeabilized with 90% methanol. An Alexa Fluor® 488-conjugated goat anti-rabbit IgG (1/2000) was used as the secondary antibody. Black - Isotype control, rabbit monoclonal IgG. Blue - Unlabelled control, cells without incubation with primary and secondary antibodies.

This data was developed using the same antibody clone in a different buffer formulation containing PBS, BSA, glycerol, and sodium azide (**ab205535**).



Immunocytochemistry/ Immunofluorescence - Anti-ELOVL5 antibody [EPR17151] - BSA and Azide free (ab240371)

Immunofluorescent analysis of 100% methanol-fixed, 0.1% Triton X-100 permeabilized HeLa (Human epithelial cells from cervix adenocarcinoma) cells labelling ELOVL5 with **ab205535** at 1/100 dilution, followed by Goat anti-rabbit IgG (Alexa Fluor® 488) (**ab150077**) secondary antibody at 1/1000 dilution (green).

Confocal image showing cytoplasmic staining on HeLa cell line.

The nuclear counter stain is DAPI (blue).

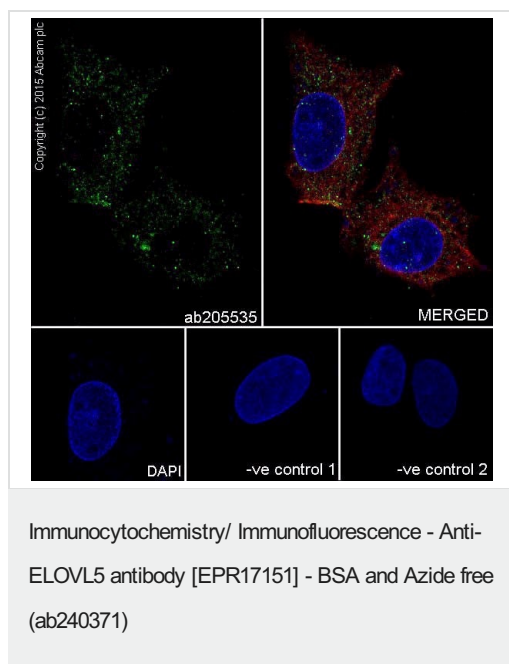
Tubulin is detected with **ab7291** (anti-Tubulin mouse mAb) at 1/1000 dilution and **ab150120** (AlexaFluor®594 Goat anti-Mouse secondary) at 1/1000 dilution (red).

The negative controls are as follows:-

-ve control 1: **ab205535** at 1/100 dilution followed by **ab150120** (AlexaFluor®594 Goat anti-Mouse secondary) at 1/1000 dilution.

-ve control 2: **ab7291** (anti-Tubulin mouse mAb) at 1/1000 dilution followed by **ab150077** (Alexa Fluor®488 Goat Anti-Rabbit IgG H&L) at 1/1000 dilution.

This data was developed using the same antibody clone in a different buffer formulation containing PBS, BSA, glycerol, and sodium azide (**ab205535**).



Immunofluorescent analysis of 100% methanol-fixed, 0.1% Triton X-100 permeabilized HepG2 (Human liver hepatocellular carcinoma) cells labeling ELOVL5 with **ab205535** at 1/100 dilution, followed by Goat anti-rabbit IgG (Alexa Fluor® 488) (**ab150077**) secondary antibody at 1/1000 dilution (green).

Confocal image showing cytoplasmic staining on HepG2 cell line.

The nuclear counter stain is DAPI (blue).

Tubulin is detected with **ab7291** (anti-Tubulin mouse mAb) at 1/1000 dilution and **ab150120** (AlexaFluor®594 Goat anti-Mouse secondary) at 1/1000 dilution (red).

The negative controls are as follows:-

-ve control 1: **ab205535** at 1/100 dilution followed by **ab150120** (AlexaFluor®594 Goat anti-Mouse secondary) at 1/1000 dilution.

-ve control 2: **ab7291** (anti-Tubulin mouse mAb) at 1/1000 dilution followed by **ab150077** (Alexa Fluor®488 Goat Anti-Rabbit IgG H&L) at 1/1000 dilution.

This data was developed using the same antibody clone in a different buffer formulation containing PBS, BSA, glycerol, and sodium azide (**ab205535**).

Why choose a recombinant antibody?

Research with confidence
Consistent and reproducible results

Long-term and scalable supply
Recombinant technology

Success from the first experiment
Confirmed specificity

Ethical standards compliant
Animal-free production

Anti-ELOVL5 antibody [EPR17151] - BSA and Azide free (ab240371)

Please note: All products are "FOR RESEARCH USE ONLY. NOT FOR USE IN DIAGNOSTIC PROCEDURES"

Our Promise to you: Quality guaranteed and expert technical support

- Replacement or refund for products not performing as stated on the datasheet

- Valid for 12 months from date of delivery
- Response to your inquiry within 24 hours
- We provide support in Chinese, English, French, German, Japanese and Spanish
- Extensive multi-media technical resources to help you
- We investigate all quality concerns to ensure our products perform to the highest standards

If the product does not perform as described on this datasheet, we will offer a refund or replacement. For full details of the Abpromise, please visit <https://www.abcam.com/abpromise> or contact our technical team.

Terms and conditions

- Guarantee only valid for products bought direct from Abcam or one of our authorized distributors