


Anti-ELOVL6/LCE antibody ab69857

[11 References](#) [3 Images](#)

Overview

Product name	Anti-ELOVL6/LCE antibody
Description	Rabbit polyclonal to ELOVL6/LCE
Host species	Rabbit
Tested applications	Suitable for: IHC-P, ICC/IF, WB
Species reactivity	Reacts with: Human Predicted to work with: Mouse, Rat 
Immunogen	Synthetic peptide corresponding to Human ELOVL6/LCE (C terminal). Database link: NP_076995 (Peptide available as ab114079)
Positive control	WB: Human brain tissue lysate. IHC-P: Human brain tissue. ICC/IF: Human brain cells.
General notes	<p>The Life Science industry has been in the grips of a reproducibility crisis for a number of years. Abcam is leading the way in addressing this with our range of recombinant monoclonal antibodies and knockout edited cell lines for gold-standard validation. Please check that this product meets your needs before purchasing.</p> <p>If you have any questions, special requirements or concerns, please send us an inquiry and/or contact our Support team ahead of purchase. Recommended alternatives for this product can be found below, along with publications, customer reviews and Q&As</p>

Properties

Form	Liquid
Storage instructions	Shipped at 4°C. Store at +4°C short term (1-2 weeks). Store at -20°C. Avoid freeze / thaw cycle.
Storage buffer	pH: 7.2 Preservative: 0.02% Sodium azide Constituent: PBS
Purity	Immunogen affinity purified
Clonality	Polyclonal
Isotype	IgG

Applications

The Abpromise guarantee

Our **Abpromise guarantee** covers the use of ab69857 in the following tested applications.

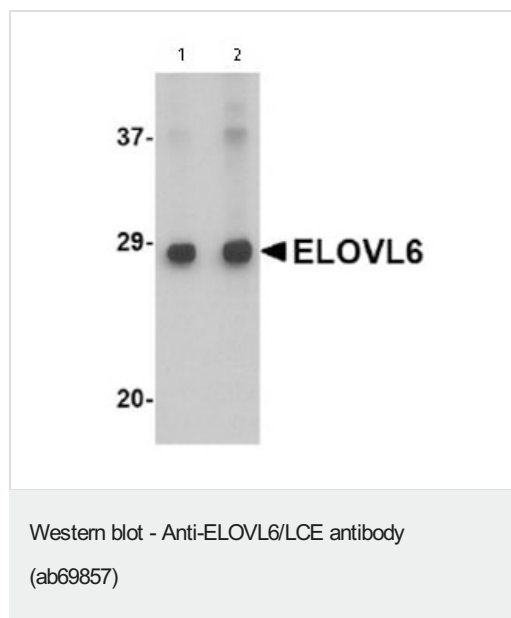
The application notes include recommended starting dilutions; optimal dilutions/concentrations should be determined by the end user.

Application	Abreviews	Notes
IHC-P		Use a concentration of 5 µg/ml.
ICC/IF		Use a concentration of 1 µg/ml.
WB		Use a concentration of 1 - 2 µg/ml. Detects a band of approximately 28 kDa (predicted molecular weight: 31 kDa). Can be blocked with ELOVL6/LCE peptide (ab114079) .

Target

Function	Condensing enzyme that catalyzes the synthesis of saturated and monounsaturated fatty acids. Highest activity toward C16:0 acyl-CoAs.
Tissue specificity	Ubiquitous.
Sequence similarities	Belongs to the ELO family.
Post-translational modifications	N-Glycosylated.
Cellular localization	Endoplasmic reticulum membrane.

Images



Lane 1 : Anti-ELOVL6/LCE antibody (ab69857) at 1 µg/ml

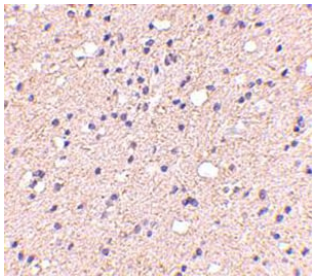
Lane 2 : Anti-ELOVL6/LCE antibody (ab69857) at 2 µg/ml

All lanes : Human brain tissue lysate

Lysates/proteins at 15 µg per lane.

Predicted band size: 31 kDa

Observed band size: 28 kDa



Immunohistochemistry of ELOVL6/LCE in human brain with ab69857 at 5 µg/ml.

Immunohistochemistry (Formalin/PFA-fixed paraffin-embedded sections) - Anti-ELOVL6/LCE antibody (ab69857)

Immunocytochemistry/ Immunofluorescence - Anti-ELOVL6/LCE antibody (ab69857)

Immunofluorescence of ELOVL6/LCE in Human Brain cells using ab69857 at 20 ug/ml.

Please note: All products are "FOR RESEARCH USE ONLY. NOT FOR USE IN DIAGNOSTIC PROCEDURES"

Our Abpromise to you: Quality guaranteed and expert technical support

- Replacement or refund for products not performing as stated on the datasheet
- Valid for 12 months from date of delivery
- Response to your inquiry within 24 hours
- We provide support in Chinese, English, French, German, Japanese and Spanish
- Extensive multi-media technical resources to help you
- We investigate all quality concerns to ensure our products perform to the highest standards

If the product does not perform as described on this datasheet, we will offer a refund or replacement. For full details of the Abpromise, please visit <https://www.abcam.com/abpromise> or contact our technical team.

Terms and conditions

- Guarantee only valid for products bought direct from Abcam or one of our authorized distributors