


Product datasheet

Anti-ELYS antibody ab14431

[1 References](#) [1 Image](#)

Overview

Product name	Anti-ELYS antibody
Description	Rabbit polyclonal to ELYS
Host species	Rabbit
Specificity	We have data to indicate that this antibody may not cross react with Mouse. However, this has not been conclusively tested and expression levels may vary in certain cell lines/tissues.
Tested applications	Suitable for: WB
Species reactivity	Reacts with: Human Predicted to work with: Orangutan 
Immunogen	Synthetic peptide (Unfortunately the amino acid sequence is considered to be commercially sensitive). The peptide sequence is within the region between aa2220 and aa2302 of human ELYS using the numbering given in entry AAN65622.1 (GeneID 25909).
Positive control	HeLa cells nuclear extract.
General notes	<p>The Life Science industry has been in the grips of a reproducibility crisis for a number of years. Abcam is leading the way in addressing this with our range of recombinant monoclonal antibodies and knockout edited cell lines for gold-standard validation. Please check that this product meets your needs before purchasing.</p> <p>If you have any questions, special requirements or concerns, please send us an inquiry and/or contact our Support team ahead of purchase. Recommended alternatives for this product can be found below, along with publications, customer reviews and Q&As</p>

Properties

Form	Liquid
Storage instructions	Shipped at 4°C. Upon delivery aliquot and store at -20°C. Avoid freeze / thaw cycles.
Storage buffer	pH: 7 Preservative: 0.1% Sodium azide Constituents: 8% PBS, 1.764% Sodium citrate, 1.815% Tris
Purity	Immunogen affinity purified
Purification notes	This antibody was purified using an epitope specific to ELYS immobilized on solid support.
Clonality	Polyclonal

Isotype

IgG

Applications

The Abpromise guarantee

Our **Abpromise guarantee** covers the use of ab14431 in the following tested applications.

The application notes include recommended starting dilutions; optimal dilutions/concentrations should be determined by the end user.

Application	Abreviews	Notes
WB		1/2000 - 1/10000. Predicted molecular weight: 272 kDa.

Target

Function

Required for the assembly of a functional nuclear pore complex (NPC) on the surface of chromosomes as nuclei form at the end of mitosis. May initiate NPC assembly by binding to chromatin and recruiting the Nup107-160 subcomplex of the NPC. Also required for the localization of the Nup107-160 subcomplex of the NPC to the kinetochore during mitosis and for the completion of cytokinesis.

Sequence similarities

Belongs to the ELYS family.
Contains 1 A.T hook DNA-binding domain.

Post-translational modifications

Phosphorylated upon DNA damage, probably by ATM or ATR.

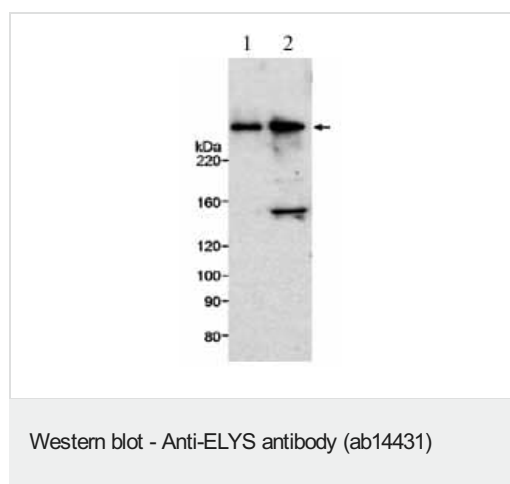
Cellular localization

Cytoplasm. Nucleus matrix. Chromosome > centromere > kinetochore. Nucleus > nucleoplasm. Nucleus > nuclear pore complex. Localizes to the nuclear pore complex (NPC) throughout interphase. Localizes to the kinetochore from prophase, and this appears to require the Nup107-160 subcomplex of the NPC. Localizes to the periphery of chromatin from late anaphase.

Form

There are 2 isoforms produced by alternative splicing.

Images



All lanes : Anti-ELYS antibody (ab14431) at 0.5 µg/ml

Lane 1 : Cell lysates prepared from HeLa cells at 10 µg/ml

Lane 2 : Cell lysates prepared from HeLa cells at 20 µg/ml

Predicted band size: 272 kDa

ab14431 at 0.5mg/ml staining human ELYS by Western blot using chemiluminescence with exposure times of 3-5 minutes. Left lane 10mg HeLa nuclear extract, right lane 20mg.

Please note: All products are "FOR RESEARCH USE ONLY. NOT FOR USE IN DIAGNOSTIC PROCEDURES"

Our Abpromise to you: Quality guaranteed and expert technical support

- Replacement or refund for products not performing as stated on the datasheet
- Valid for 12 months from date of delivery
- Response to your inquiry within 24 hours

- We provide support in Chinese, English, French, German, Japanese and Spanish
- Extensive multi-media technical resources to help you
- We investigate all quality concerns to ensure our products perform to the highest standards

If the product does not perform as described on this datasheet, we will offer a refund or replacement. For full details of the Abpromise, please visit <https://www.abcam.com/abpromise> or contact our technical team.

Terms and conditions

- Guarantee only valid for products bought direct from Abcam or one of our authorized distributors