

## Product datasheet

### Anti-EME1 antibody ab88878

★ ★ ★ ★ ★ [2 Abreviews](#) [2 References](#) [3 Images](#)

#### Overview

<b>Product name</b>	Anti-EME1 antibody
<b>Description</b>	Mouse polyclonal to EME1
<b>Host species</b>	Mouse
<b>Tested applications</b>	<b>Suitable for:</b> WB, ICC/IF
<b>Species reactivity</b>	<b>Reacts with:</b> Human
<b>Immunogen</b>	Recombinant full length protein within Human EME1. The exact immunogen sequence used to generate this antibody is proprietary information. If additional detail on the immunogen is needed to determine the suitability of the antibody for your needs, please <b><a href="#">contact</a></b> our Scientific Support team to discuss your requirements.
<b>Positive control</b>	HeLa or Jurkat cell lysate. HeLa cells.
<b>General notes</b>	<p>The Life Science industry has been in the grips of a reproducibility crisis for a number of years. Abcam is leading the way in addressing this with our range of recombinant monoclonal antibodies and knockout edited cell lines for gold-standard validation. Please check that this product meets your needs before purchasing.</p> <p>If you have any questions, special requirements or concerns, please send us an inquiry and/or contact our Support team ahead of purchase. Recommended alternatives for this product can be found below, along with publications, customer reviews and Q&amp;As</p>

#### Properties

<b>Form</b>	Liquid
<b>Storage instructions</b>	Shipped at 4°C. Upon delivery aliquot and store at -20°C or -80°C. Avoid repeated freeze / thaw cycles.
<b>Storage buffer</b>	pH: 7.40 Constituent: 100% PBS
<b>Purity</b>	Protein A purified
<b>Clonality</b>	Polyclonal
<b>Isotype</b>	IgG

#### Applications

## The Abpromise guarantee

Our **Abpromise guarantee** covers the use of ab88878 in the following tested applications.

The application notes include recommended starting dilutions; optimal dilutions/concentrations should be determined by the end user.

Application	Abreviews	Notes
WB	★☆☆☆☆ (1)	Use a concentration of 1 µg/ml. Predicted molecular weight: 63 kDa.
ICC/IF		Use a concentration of 10 µg/ml.

## Target

### Function

Interacts with MUS81 to form a DNA structure-specific endonuclease with substrate preference for branched DNA structures with a 5'-end at the branch nick. Typical substrates include 3'-flap structures, replication forks and nicked Holliday junctions. May be required in mitosis for the processing of stalled or collapsed replication forks.

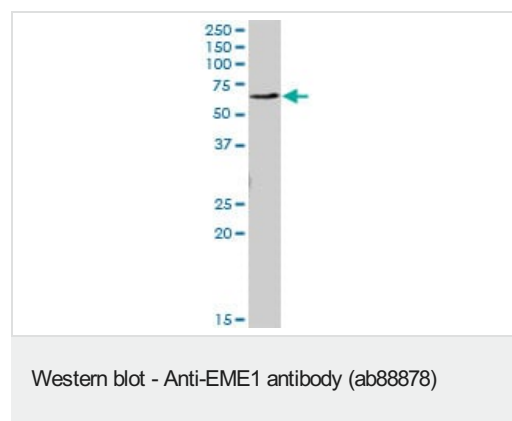
### Sequence similarities

Belongs to the EME1/MMS4 family.

### Cellular localization

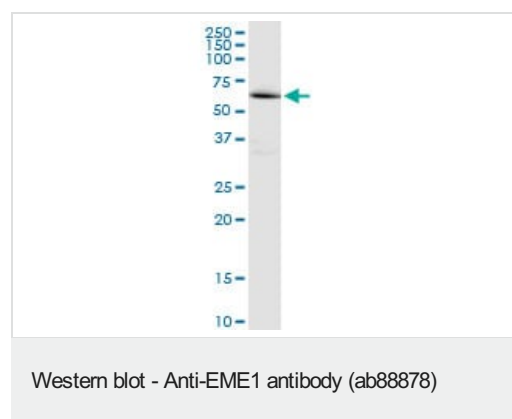
Nucleus > nucleolus. Recruited to regions of DNA damage in S-phase cells.

## Images



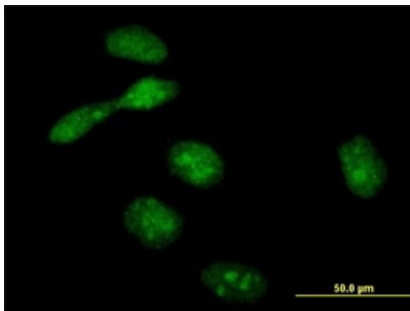
Anti-EME1 antibody (ab88878) at 1 µg/ml + HeLa cell lysate at 50 µg

**Predicted band size:** 63 kDa



Anti-EME1 antibody (ab88878) at 1 µg/ml + Jurkat cell lysate at 50 µg

**Predicted band size:** 63 kDa



ab88878 at 10 µg/ml staining EME1 in HeLa cells by immunofluorescence.

Immunocytochemistry/ Immunofluorescence - Anti-EME1 antibody (ab88878)

**Please note:** All products are "FOR RESEARCH USE ONLY. NOT FOR USE IN DIAGNOSTIC PROCEDURES"

### Our Abpromise to you: Quality guaranteed and expert technical support

---

- Replacement or refund for products not performing as stated on the datasheet
- Valid for 12 months from date of delivery
- Response to your inquiry within 24 hours
- We provide support in Chinese, English, French, German, Japanese and Spanish
- Extensive multi-media technical resources to help you
- We investigate all quality concerns to ensure our products perform to the highest standards

If the product does not perform as described on this datasheet, we will offer a refund or replacement. For full details of the Abpromise, please visit <https://www.abcam.com/abpromise> or contact our technical team.

### Terms and conditions

---

- Guarantee only valid for products bought direct from Abcam or one of our authorized distributors