


Product datasheet

Anti-Emi1 antibody [EPR15320] ab184950

Recombinant RabMAb

★★★★☆ [2 Abreviews](#) [5 Images](#)

Overview

Product name	Anti-Emi1 antibody [EPR15320]
Description	Rabbit monoclonal [EPR15320] to Emi1
Host species	Rabbit
Tested applications	Suitable for: ICC/IF, WB, IHC-P, Flow Cyt (Intra)
Species reactivity	Reacts with: Human Predicted to work with: Mouse, Rat 
Immunogen	Recombinant fragment. This information is proprietary to Abcam and/or its suppliers.
Positive control	HepG2 and HeLa cells and cell lysates; 293 and K562 cell lysates; Human ovarian carcinoma tissue.
General notes	<p>This product is a recombinant monoclonal antibody, which offers several advantages including:</p> <ul style="list-style-type: none">- High batch-to-batch consistency and reproducibility- Improved sensitivity and specificity- Long-term security of supply- Animal-free production <p>For more information see here.</p> <p>Our RabMAb[®] technology is a patented hybridoma-based technology for making rabbit monoclonal antibodies. For details on our patents, please refer to RabMAb[®] patents.</p>

Properties

Form	Liquid
Storage instructions	Shipped at 4°C. Store at +4°C short term (1-2 weeks). Upon delivery aliquot. Store at -20°C long term. Avoid freeze / thaw cycle.
Storage buffer	pH: 7.2 Preservative: 0.01% Sodium azide Constituents: 59% PBS, 40% Glycerol (glycerin, glycerine), 0.05% BSA
Purity	Protein A purified
Clonality	Monoclonal
Clone number	EPR15320

Isotype

IgG

Applications

The Abpromise guarantee

Our **Abpromise guarantee** covers the use of ab184950 in the following tested applications.

The application notes include recommended starting dilutions; optimal dilutions/concentrations should be determined by the end user.

Application	Abreviews	Notes
ICC/IF	★★★★★ (1)	1/250.
WB		1/1000 - 1/10000. Detects a band of approximately 56 kDa (predicted molecular weight: 50 kDa).
IHC-P		1/100 - 1/250. Perform heat mediated antigen retrieval with Tris/EDTA buffer pH 9.0 before commencing with IHC staining protocol.
Flow Cyt (Intra)		1/180. ab172730 - Rabbit monoclonal IgG, is suitable for use as an isotype control with this antibody.

Target

Function

Regulates progression through early mitosis by inhibiting the anaphase promoting complex/cyclosome (APC). Binds to the APC activators CDC20 and FZR1/CDH1 to prevent APC activation. Can also bind directly to the APC to inhibit substrate-binding.

Sequence similarities

Contains 1 F-box domain.
Contains 1 IBR-type zinc finger.

Developmental stage

Accumulates in late G1 phase, levels rise during S phase and drop in early mitosis.

Domain

The C-terminal region is required for inhibition of APC activity.

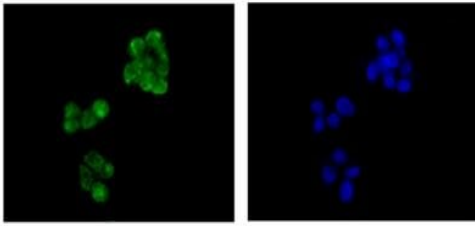
Post-translational modifications

Phosphorylation by CDK2 and subsequently by PLK1 triggers degradation during early mitosis through ubiquitin-mediated proteolysis by the SCF ubiquitin ligase complex containing the F-box protein BTRC. This degradation is necessary for the activation of APC in late mitosis and subsequent mitotic progression.

Cellular localization

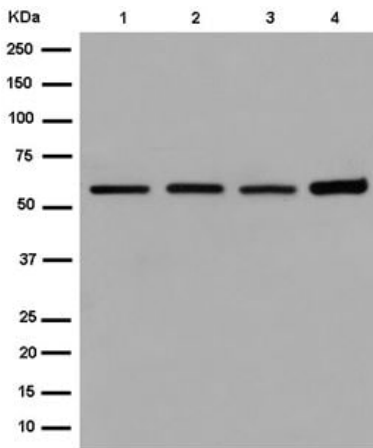
Nucleus. Cytoplasm. Cytoplasm > cytoskeleton > spindle. In interphase, localizes in a punctate manner in the nucleus and cytoplasm with some perinuclear concentration. In mitotic cells, localizes throughout the cell, particularly at the spindle.

Images



Immunocytochemistry/ Immunofluorescence - Anti-Emi1 antibody [EPR15320] (ab184950)

Immunofluorescent analysis of HepG2 cells (4% paraformaldehyde-fixed) labeling Emi1 with ab184950 at 1/250 dilution. Goat anti-rabbit IgG (Alexa Fluor® 488) at 1/200 dilution was used as the secondary antibody. The slide on the right is counter stained with Dapi (blue).



Western blot - Anti-Emi1 antibody [EPR15320] (ab184950)

All lanes : Anti-Emi1 antibody [EPR15320] (ab184950) at 1/5000 dilution

Lane 1 : K562 cell lysate

Lane 2 : HeLa cell lysate

Lane 3 : 293 cell lysate

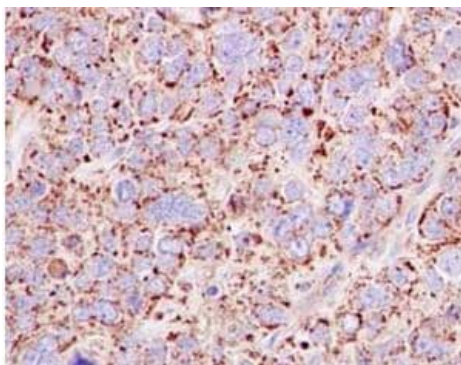
Lane 4 : HepG2 cell lysate

Lysates/proteins at 20 µg per lane.

Secondary

All lanes : Goat Anti-Rabbit IgG, (H+L), Peroxidase conjugated at 1/1000 dilution

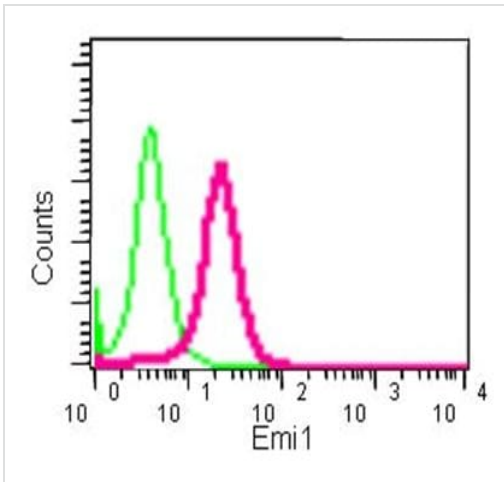
Predicted band size: 50 kDa



Immunohistochemistry (Formalin/PFA-fixed paraffin-embedded sections) - Anti-Emi1 antibody [EPR15320] (ab184950)

Immunohistochemical analysis of paraffin-embedded Human ovarian carcinoma tissue labeling Emi1 with ab184950 at 1/250 dilution followed by pre-diluted HRP-conjugated secondary antibody and counter-stained with Hematoxylin.





Perform heat mediated antigen retrieval with EDTA buffer pH 9 before commencing with IHC staining protocol.



Intracellular flow cytometric analysis of HeLa cells (2% paraformaldehyde-fixed) labeling Emi1 with ab184950 at 1/180 dilution (red). Goat anti-rabbit IgG (FITC) at 1/150 dilution was used as the secondary antibody. Rabbit monoclonal IgG was used as the isotype control (green).

Flow Cytometry (Intracellular) - Anti-Emi1 antibody [EPR15320] (ab184950)

Why choose a recombinant antibody?

 Research with confidence Consistent and reproducible results	 Long-term and scalable supply Recombinant technology
 Success from the first experiment Confirmed specificity	 Ethical standards compliant Animal-free production

Anti-Emi1 antibody [EPR15320] (ab184950)

Please note: All products are "FOR RESEARCH USE ONLY. NOT FOR USE IN DIAGNOSTIC PROCEDURES"

Our Abpromise to you: Quality guaranteed and expert technical support

- Replacement or refund for products not performing as stated on the datasheet
- Valid for 12 months from date of delivery
- Response to your inquiry within 24 hours
- We provide support in Chinese, English, French, German, Japanese and Spanish
- Extensive multi-media technical resources to help you
- We investigate all quality concerns to ensure our products perform to the highest standards

If the product does not perform as described on this datasheet, we will offer a refund or replacement. For full details of the Abpromise, please visit <https://www.abcam.com/abpromise> or contact our technical team.

Terms and conditions

- Guarantee only valid for products bought direct from Abcam or one of our authorized distributors