




Product datasheet

Anti-EMILIN1 antibody ab231052

4 Images

Overview

Product name	Anti-EMILIN1 antibody
Description	Rabbit polyclonal to EMILIN1
Host species	Rabbit
Tested applications	Suitable for: WB, IHC-P
Species reactivity	Reacts with: Rat Predicted to work with: Mouse, Human 
Immunogen	Recombinant fragment (His-tag) corresponding to Rat EMILIN1 aa 650 to the C-terminus. (Expressed in E.coli). Database link: D3Z9E1 <div>  Run BLAST with  Run BLAST with </div>
Positive control	IHC-P: Rat spleen tissue. WB: Rat serum; Rat intestine lysate; Recombinant rat EMILIN1 protein.
General notes	<p>The Life Science industry has been in the grips of a reproducibility crisis for a number of years. Abcam is leading the way in addressing this with our range of recombinant monoclonal antibodies and knockout edited cell lines for gold-standard validation. Please check that this product meets your needs before purchasing.</p> <p>If you have any questions, special requirements or concerns, please send us an inquiry and/or contact our Support team ahead of purchase. Recommended alternatives for this product can be found below, along with publications, customer reviews and Q&As</p>

Properties

Form	Liquid
Storage instructions	Shipped at 4°C. Store at +4°C short term (1-2 weeks). Upon delivery aliquot. Store at -20°C long term. Avoid freeze / thaw cycle.
Storage buffer	pH: 7.40 Preservative: 0.02% Sodium azide Constituents: 44.12% PBS, 55.77% Glycerol (glycerin, glycerine)
Purity	Immunogen affinity purified
Purification notes	ab231052 was purified by antigen-specific affinity chromatography followed by Protein A affinity chromatography.
Clonality	Polyclonal

Isotype

IgG

Applications

The Abpromise guarantee

Our **Abpromise guarantee** covers the use of ab231052 in the following tested applications.

The application notes include recommended starting dilutions; optimal dilutions/concentrations should be determined by the end user.

Application	Abreviews	Notes
WB		Use a concentration of 0.5 - 5 µg/ml. Predicted molecular weight: 94 kDa.
IHC-P		Use a concentration of 5 - 20 µg/ml.

Target

Function

May be responsible for anchoring smooth muscle cells to elastic fibers, and may be involved not only in the formation of the elastic fiber, but also in the processes that regulate vessel assembly. Has cell adhesive capacity.

Tissue specificity

Distributed in tissues where resilience and elastic recoil are prominent. Highest levels in the adult small intestine, aorta, lung, uterus, and appendix and in the fetal spleen, kidney, lung, and heart; intermediate expression was detected in adult liver, ovary, colon, stomach, lymph node and spleen; adult heart, bladder, prostate, adrenal gland, mammary gland, placenta and kidney showed low expression whereas a series of other adult tissues, including skeletal muscle and different regions of adult brain show no expression.

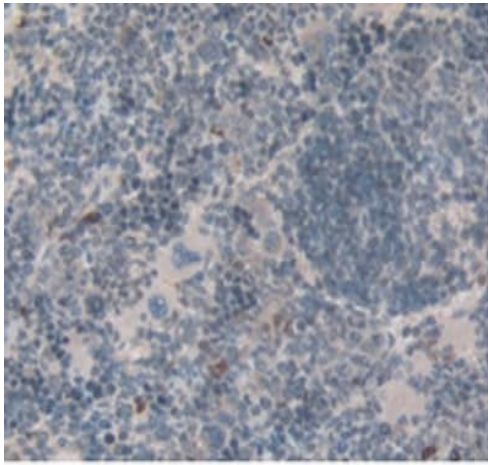
Sequence similarities

Contains 1 C1q domain.
Contains 1 collagen-like domain.
Contains 1 EMI domain.

Cellular localization

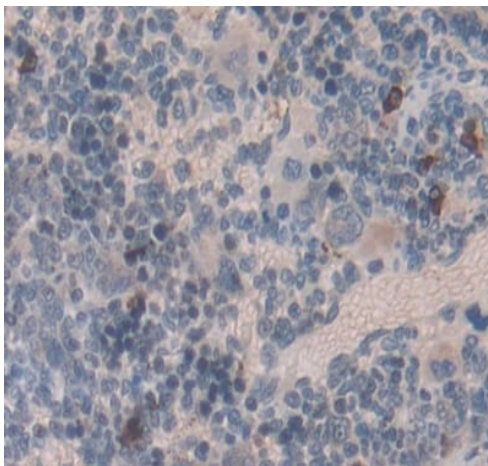
Secreted > extracellular space > extracellular matrix. Found mainly at the interface between amorphous elastin and microfibrils.

Images



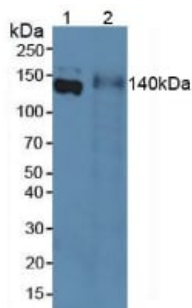
Immunohistochemistry (Formalin/PFA-fixed paraffin-embedded sections) - Anti-EMILIN1 antibody (ab231052)

Paraffin-embedded rat spleen tissue stained for EMILIN1 using ab231052 at 20 µg/ml in immunohistochemical analysis, followed by DAB staining.



Immunohistochemistry (Formalin/PFA-fixed paraffin-embedded sections) - Anti-EMILIN1 antibody (ab231052)

Paraffin-embedded rat spleen tissue stained for EMILIN1 using ab231052 at 20 µg/ml in immunohistochemical analysis, followed by DAB staining.



Western blot - Anti-EMILIN1 antibody (ab231052)

All lanes : Anti-EMILIN1 antibody (ab231052) at 3 µg/ml

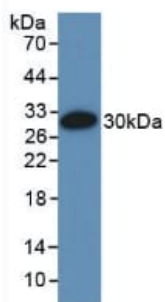
Lane 1 : Rat serum

Lane 2 : Rat intestine lysate

Secondary

All lanes : HRP-Linked Guinea pig Anti-Rabbit antibody at 1/2000 dilution

Predicted band size: 94 kDa



Western blot - Anti-EMILIN1 antibody (ab231052)

Anti-EMILIN1 antibody (ab231052) at 3 µg/ml + Recombinant rat EMILIN1 protein

Secondary

HRP-Linked Guinea pig Anti-Rabbit antibody at 1/2000 dilution

Predicted band size: 94 kDa

Please note: All products are "FOR RESEARCH USE ONLY. NOT FOR USE IN DIAGNOSTIC PROCEDURES"

Our Abpromise to you: Quality guaranteed and expert technical support

- Replacement or refund for products not performing as stated on the datasheet
- Valid for 12 months from date of delivery
- Response to your inquiry within 24 hours
- We provide support in Chinese, English, French, German, Japanese and Spanish
- Extensive multi-media technical resources to help you
- We investigate all quality concerns to ensure our products perform to the highest standards

If the product does not perform as described on this datasheet, we will offer a refund or replacement. For full details of the Abpromise, please visit <https://www.abcam.com/abpromise> or contact our technical team.

Terms and conditions

- Guarantee only valid for products bought direct from Abcam or one of our authorized distributors